

# Health Outcomes of Continuous Positive Airway Pressure versus Oral Appliance Treatment for Obstructive Sleep Apnea

## A Randomized Controlled Trial

Craig L. Phillips<sup>1,2</sup>, Ronald R. Grunstein<sup>2,3</sup>, M. Ali Darendeliler<sup>4</sup>, Anastasia S. Mihailidou<sup>5,6</sup>, Vasantha K. Srinivasan<sup>4</sup>, Brendon J. Yee<sup>2,3</sup>, Guy B. Marks<sup>2,7</sup>, and Peter A. Cistulli<sup>1,2</sup>

<sup>1</sup>Department of Respiratory and Sleep Medicine and <sup>5</sup>Department of Cardiology, Royal North Shore Hospital, St. Leonards, Australia; <sup>2</sup>NHMRC Centre for Integrated Research and Understanding of Sleep, Woolcock Institute of Medical Research, Sydney Medical School, and <sup>4</sup>Department of Orthodontics, Sydney Dental Hospital and Faculty of Dentistry, University of Sydney, Sydney, Australia; <sup>3</sup>Department of Respiratory and Sleep Medicine, Royal Prince Alfred Hospital, Sydney, Australia; <sup>6</sup>Kolling Medical Research Institute, Royal North Shore Hospital and University of Sydney, Sydney, Australia; and <sup>7</sup>Department of Respiratory Medicine, Liverpool Hospital, Sydney, Australia

**Rationale:** Continuous positive airway pressure (CPAP) and mandibular advancement device (MAD) therapy are commonly used to treat obstructive sleep apnea (OSA). Differences in efficacy and compliance of these treatments are likely to influence improvements in health outcomes.

**Objectives:** To compare health effects after 1 month of optimal CPAP and MAD therapy in OSA.

**Methods:** In this randomized crossover trial, we compared the effects of 1 month each of CPAP and MAD treatment on cardiovascular and neurobehavioral outcomes.

**Measurements and Main Results:** Cardiovascular (24-h blood pressure, arterial stiffness), neurobehavioral (subjective sleepiness, driving simulator performance), and quality of life (Functional Outcomes of Sleep Questionnaire, Short Form-36) were compared between treatments. Our primary outcome was 24-hour mean arterial pressure. A total of 126 patients with moderate-severe OSA (apnea hypopnea index [AHI], 25.6 [SD 12.3]) were randomly assigned to a treatment order and 108 completed the trial with both devices. CPAP was more efficacious than MAD in reducing AHI (CPAP AHI, 4.5 ± 6.6/h; MAD AHI, 11.1 ± 12.1/h;  $P < 0.01$ ) but reported compliance was higher on MAD (MAD, 6.50 ± 1.3 h per night vs. CPAP, 5.20 ± 2 h per night;  $P < 0.00001$ ). The 24-hour mean arterial pressure was not inferior on treatment with MAD compared with CPAP (CPAP-MAD difference, 0.2 mm Hg [95% confidence interval, -0.7 to 1.1]); however, overall, neither treatment improved blood pressure. In contrast, sleepiness, driving simulator performance, and disease-specific quality of life

(Received in original form December 13, 2012; accepted in final form February 7, 2013)

Supported by Project Grant 457557, Practitioner Fellowship 202916 (R.R.G.), Health Professional Fellowship 571179, and CIRUS Postdoctoral Fellowship (C.L.P.) from the Australian National Health and Medical Research Council. ResMed Inc. donated all continuous positive airway pressure equipment for the trial. SomnoMed Ltd. donated all oral appliances for the trial and an unrestricted grant of A\$60,000 to support the study.

**Author Contributions:** P.A.C., R.R.G., M.A.D., G.B.M., and C.L.P. were responsible for the concept and design of the study. A.S.M., V.K.S., M.A.D., and C.L.P. were responsible for data acquisition. C.L.P., P.A.C., G.B.M., R.R.G., and A.S.M. performed the analysis and interpretation of data. C.L.P., P.A.C., and G.B.M. drafted the manuscript. All authors were responsible for revising of the manuscript for important intellectual content. C.L.P. and G.B.M. performed all statistical analyses. P.A.C., R.R.G., and M.A.D. obtained funding for the study. P.A.C., C.L.P., B.J.Y., and A.S.M. provided administrative, technical, and material support for the study. C.L.P. and P.A.C. supervised the study. C.L.P. is the guarantor.

Correspondence and requests for reprints should be addressed to Craig L. Phillips, Ph.D., Department of Respiratory and Sleep Medicine, Royal North Shore Hospital, St Leonards, NSW 2065 Australia. E-mail: craig.phillips@sydney.edu.au

This article has an online supplement, which is accessible from this issue's table of contents at [www.atsjournals.org](http://www.atsjournals.org)

Am J Respir Crit Care Med Vol 187, Iss. 8, pp 879-887, Apr 15, 2013

Copyright © 2013 by the American Thoracic Society

Originally Published in Press as DOI: 10.1164/rccm.201212-2223OC on February 14, 2013

Internet address: [www.atsjournals.org](http://www.atsjournals.org)

### AT A GLANCE COMMENTARY

#### Scientific Knowledge on the Subject

Continuous positive airway pressure (CPAP) is considered to be the treatment of choice for obstructive sleep apnea (OSA). Oral appliance (OA) therapy, such as the mandibular advancement device (MAD), is a viable alternative with growing use, particularly in patients with milder OSA. Comparative effectiveness studies that examine multiple important health outcomes with these treatment modalities in patients with the full spectrum of OSA severity are lacking.

#### What This Study Adds to the Field

In the short term, health outcomes in patients with moderate to severe OSA were similar after treatment with CPAP and MAD. This was likely explained by the greater efficacy of CPAP being offset by inferior compliance relative to MAD. These findings strongly challenge current practice parameters recommending MAD treatment be considered only in patients with mild to moderate OSA. Long-term comparative effectiveness studies between CPAP and MAD that include objectively measured treatment compliance are needed to better define treatment strategies for patients with OSA.

improved on both treatments by similar amounts, although MAD was superior to CPAP for improving four general quality-of-life domains.

**Conclusions:** Important health outcomes were similar after 1 month of optimal MAD and CPAP treatment in patients with moderate-severe OSA. The results may be explained by greater efficacy of CPAP being offset by inferior compliance relative to MAD, resulting in similar effectiveness.

Clinical trial registered with <https://www.anzctr.org.au> (ACTRN 12607000289415).

**Keywords:** obstructive sleep apnea; continuous positive airway pressure; mandibular advancement device; health outcomes; efficacy and compliance

Obstructive sleep apnea (OSA) affects up to 17% of adults in the United States. The prevalence is similar in other western and eastern populations (1). OSA is characterized by disordered breathing during sleep, resulting in sleep fragmentation and intermittent hypoxemia. Patients often suffer excessive daytime

sleepiness and many are at increased risk for motor vehicle crashes (2). Neurocognitive decline (3) and a lower self-reported quality of life (QOL) are also common. In addition, hypertension is highly prevalent and there is an increased incidence of cardiovascular mortality, stroke, and heart attack (4–6). Hence, OSA is a major public health problem, imposing a financial burden on health systems (7, 8).

The usual treatment of choice for OSA is nasal continuous positive airway pressure (CPAP) (9). Randomized controlled trials have demonstrated improvements in many health outcomes including subjective sleepiness (10), QOL (11), and blood pressure (BP) (12). Evidence also suggests that this treatment may reduce motor vehicle and driving simulator crashes (13). Long-term treatment may also reduce the incidence of cardiovascular events, at least in patients with severe OSA (14). However, despite these health-related improvements, many patients either reject treatment outright or only partially tolerate it, resulting in significant residual OSA (15). This limits the clinical effectiveness of this treatment modality.

More recently, oral appliances have proved to be an effective treatment for OSA, particularly the mandibular advancement device (MAD), which reposition the tongue and/or lower jaw to increase the dimensions of the airway lumen. Although the overall effect of these devices on sleep-disordered breathing is inferior to CPAP, their uptake and acceptance as an alternative therapy is generally higher (11). Similar to CPAP, several randomized controlled trials have reported improvements in BP (16, 17), sleepiness (18), and QOL (16).

Although several randomized trials have also directly compared CPAP with MAD (16, 19–26), outcomes are often limited to OSA alleviation and this has often been without gold standard polysomnography (20, 21). Few studies have assessed more clinically relevant health outcomes and used polysomnography to also assess treatment efficacy. Furthermore, many studies are small (19–23) or exclude patients with severe OSA (16, 20, 22), limiting the generalizability of the findings. Many studies have also not considered variation in treatment acclimatization and optimization periods (16, 19, 21, 22). Finally, because of the rapid changes in device development there are no studies that have used state-of-the-art MAD devices that are optimally titrated and applicable to current clinical practice.

In the present study, we aimed to compare the effect of CPAP and MAD treatments on health outcomes across multiple clinically relevant domains including cardiovascular function, sleepiness, driving simulator performance, and QOL. We hypothesized that the suboptimal efficacy with MAD would be counterbalanced by superior compliance relative to CPAP, resulting in similar overall alleviation of OSA. This would in turn result in similar effectiveness of both treatments for health outcomes related to OSA. The results from this study have previously been reported in the form of abstracts (27, 28).

## METHODS

A randomized crossover open label study design was used to compare the health effects of 1 month of optimal treatment of OSA with CPAP versus MAD therapy. Optimal treatment was defined as attaining the highest compliance and best efficacy with each treatment under standard clinical practices.

### Sample

The study was conducted at three sleep centers in Sydney, Australia (*see* online supplement). Eligibility criteria included patients with newly diagnosed OSA (apnea hypopnea index [AHI] >10 events per h); aged 20 years or older; greater than or equal to two symptoms of OSA (snoring, fragmented sleep, witnessed apneas, or daytime sleepiness); and a willingness to use both treatments. Recruitment was enriched for moderate-severe OSA. Patients were excluded for any of the following reasons: previous OSA treatment or a need for immediate treatment

based on clinical judgment; central sleep apnea; a coexisting sleep disorder; regular use of sedatives or narcotics; preexisting lung or psychiatric disease; and any contraindication for oral appliance therapy (e.g., periodontal disease or insufficient dentition). Dental eligibility was assessed by an orthodontist at the Sydney Dental Hospital. All study procedures were approved by the site-specific Institutional Human Research Ethics Committees. Before consenting, patients were told they would be compensated for participating in the study by receiving the treatment device recommended by their sleep physician at no cost.

## Procedures

All sleep studies were performed using full polysomnography according to standard procedures (*see* online supplement) (29). Treatment efficacy was established by polysomnography at the end of each treatment period under intention-to-treat conditions, with device use during the night being under patient control. Patients who met all eligibility criteria were randomized to both the treatment acclimatization and treatment arm orders. This was to minimize any bias related to treatment preference based on the order of treatment exposure and resulted in four randomized sequences (Figure 1).

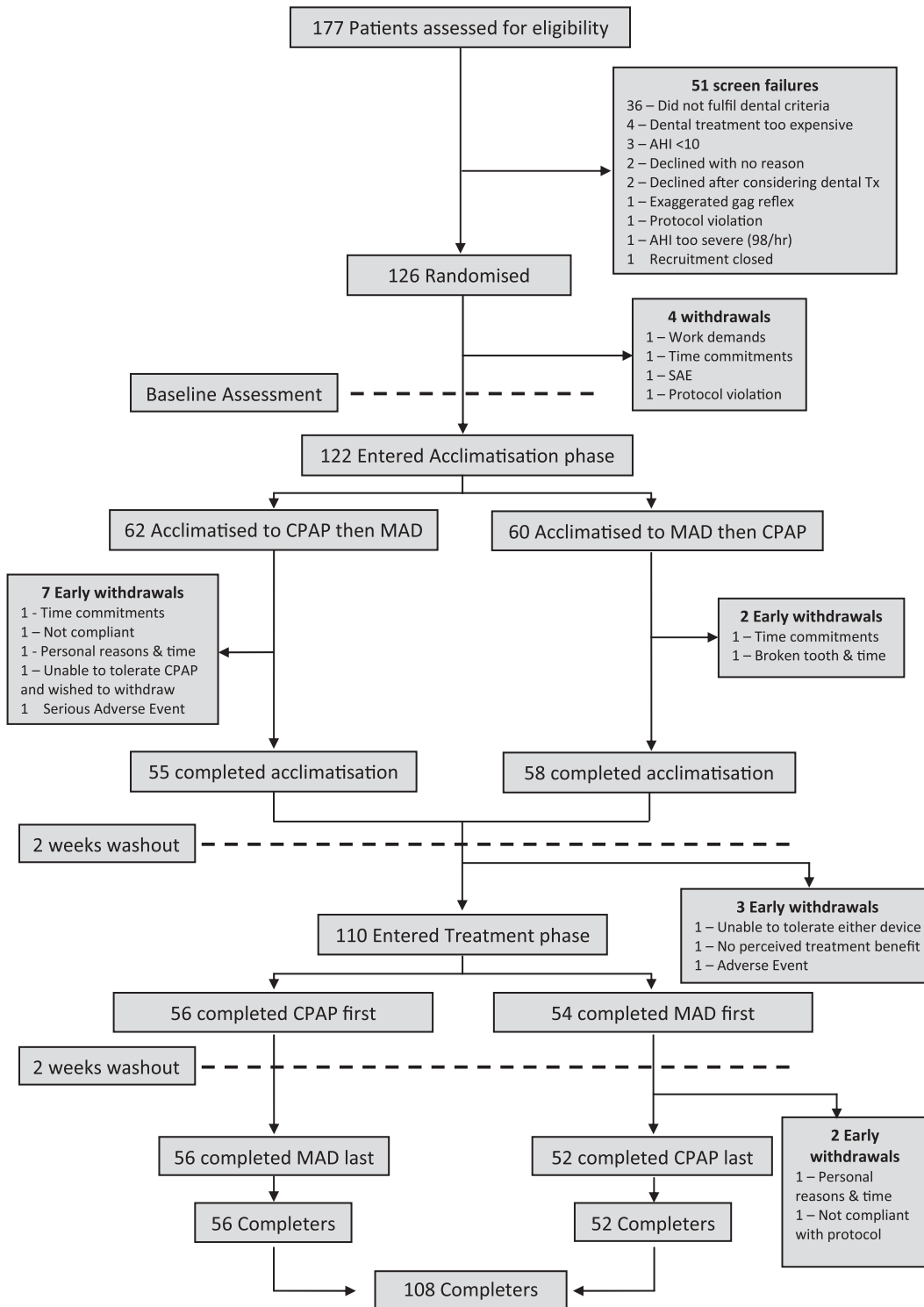
The CPAP device used in the trial was the ResMed Autoset S8 (ResMed, Bella Vista, Australia). The MAD was the Somnodent (SomnoMed Ltd., Sydney, Australia), a custom fitted and titratable two-piece device with proved clinical effectiveness in treating OSA (17, 30, 31). The procedures for fitting, titration, and acclimatization to each device are described in detail in the online supplement. Briefly, a fixed CPAP pressure was determined using a previously validated autotitrating method based on the 95th percentile pressure that controlled most of the OSA events (32). In contrast, MAD was self-titrated by gradually advancing the device until the maximum comfortable limit of mandibular advancement was achieved. During each of the 4–6 weeks of acclimatization with each device, all patients were asked to use their device for as long as they could tolerate it on a nightly basis. After usage patterns had stabilized, treatment was considered to be optimized.

All outcomes were assessed on three occasions, at baseline before treatment acclimatization and then at the end of each of the 1-month treatment arms. The primary outcome was the difference in 24-hour mean arterial pressure (24MAP) between CPAP and MAD determined from 24-hour ambulatory BP monitoring. Secondary cardiovascular outcomes included other 24-hour ambulatory BP and central BP and arterial stiffness (Sphy-moCor, AtCor Medical, Ryde, Australia) (33). We also assessed neuro-behavioral function and QOL using the Functional Outcomes of Sleep Questionnaire (FOSQ) (34), the Short Form-36 (SF-36) (35), the Epworth Sleepiness Score (ESS) (36), and the AusEd driving simulator (Australasian Sleep Trials Network, Australia) (37). Daily diaries were also used to monitor treatment side effects and compile subjective compliance data. After completing the trial but before knowledge of their results, patients reported their treatment preference (CPAP, MAD, either, or neither). Details of all outcome assessments are available in the online supplement.

## Statistical Analysis

To ensure an adequate sample size to assess multiple unrelated outcomes, we powered the study on a BP outcome. The analysis was designed to establish noninferiority of MAD compared with CPAP for the primary outcome (24MAP). A previous study that also did not select patients on the basis of their hypertensive status showed that OSA treatment with therapeutic CPAP lowered 24MAP by 3.3 mm Hg relative to sham CPAP (38). Therefore, we assumed that we could establish noninferiority of MAD to CPAP for control of 24MAP with a noninferiority margin of 1.6 mm Hg. Based on our own data (17) we estimated a within-subject mean square error of 3.9 for 24MAP. Hence, to detect noninferiority of this outcome with 90% power, using a noninferiority margin of 1.6 mm Hg, a sample size of 108 completers was deemed to be required.

We limited our analyses to the 108 subjects who completed the trial, regardless of compliance with their assigned treatment. In an initial analysis, no acclimatization or treatment arm order effects were found (*see* online supplement). The primary hypothesis was tested by comparing the upper limit of the 95% confidence interval for the MAD-CPAP difference in 24MAP with the *a priori* noninferiority margin using the paired *t* test. All other outcomes were compared using repeated measures analysis of variance (*see* online supplement).



**Figure 1.** Study flowchart. A total of 108 patients completed the trial. Based on the separate randomization to the acclimatization phase and to the treatment phase for each of mandibular advancement device (MAD, M) and continuous positive airway pressure (CPAP, C), there were four randomization sequences with patient numbers as follows: M/C/M/C = 26; M/C/C/M = 29; C/M/C/M = 27; and C/M/M/C = 26. AHI = apnea hypopnea index; SAE = serious adverse event.

Power analysis was performed using PASS software version 11 (NCSS Inc., Kaysville, UT). All other analyses were made using the PASW statistical software version 17 (SPSS Inc., Chicago, IL).

**RESULTS**

**Patient Flow**

The patient flow through the study is detailed in Figure 1. Among the 51 screening failures, 36 patients did not fulfill dental criteria and an additional 6 declined to have the required dental work that

would make them eligible for MAD treatment. Only 18 patients (14%) withdrew after randomization leaving 108 (86%) who completed the study. However, only two patients withdrew because of treatment intolerance (one CPAP and one both CPAP and MAD). None of the investigator-initiated withdrawals that were caused by adverse or serious adverse events were trial related.

**Patient Characteristics**

Of the 126 randomized patients, 81% were male and a majority (82%) had moderate or severe OSA with AHI greater than or

**TABLE 1. BASELINE CHARACTERISTICS OF ALL RANDOMIZED PATIENTS**

Variable	Mean (SD)	Range
Number randomized	126	—
Mild/moderate/severe OSA	23/69/34	—
Demographics		
M/F	102/24	—
Age, yr	49.5 (11.2)	22–78
Anthropometry		
Body mass index, kg/m <sup>2</sup>	29.5 (5.5)	18.7–55.5
Waist circumference, cm	101.2 (15.8)	37.5–139
Neck circumference, cm	40.5 (3.8)	32–56
Sleep apnea		
AHI, h <sup>-1</sup>	25.6 (12.3)	10.2–68.8
ODI, 3%	20.8 (12.5)	1.7–67.6
Sa <sub>O<sub>2</sub></sub> T <90%	5.4 (8.8)	0–59.5
Minimum Sp <sub>O<sub>2</sub></sub>	82.7 (7.6)	62–93
Arousal index, h <sup>-1</sup>	34.3 (15.3)	8.1–79.6
Epworth Sleepiness Score	9.1 (4.2)	1–18
Office blood pressure		
Systolic	123.7 (14.1)	98–163
Diastolic	80.6 (9.1)	67–106
Medication		
Antihypertensive	48	—
Antidiabetic	7	—
Cholesterol	24	—
Reflux	15	—
Antidepressants	16	—
Antithrombotic	11	—

*Definition of abbreviations:* AHI = apnea hypopnea index; ODI = oxygen desaturation index; OSA = obstructive sleep apnea; Sa<sub>O<sub>2</sub></sub> T <90% = percentage of total sleep time spent with arterial oxygen saturation less than 90%.

Mild OSA: AHI between 5 and 15 events per hour.

Moderate OSA: AHI between 15 and 30 events per hour.

Severe OSA: AHI more than 30 events per hour.

equal to 15 per hour (Table 1). Among the 108 completers, 18% had mild OSA (AHI = 13); 50% had moderate OSA (AHI = 22); and 32% had severe OSA (AHI = 42). Hence, in the overall group 82% had moderate-severe OSA (AHI = 26; oxygen desaturation index = 21 per hour). At baseline, 50% of patients were sleepy based on an ESS greater than 10 and 38% of patients were on antihypertensive medication.

### Treatment Efficacy and Preference

After titration and acclimatization with each device, the mean (SD) CPAP pressure was 10.5 ± 2 cm H<sub>2</sub>O (range, 4–18 cm H<sub>2</sub>O), whereas the mean mandibular advancement was 8.09 ± 2.6 mm (range, 1.1–15 mm). All metrics of sleep-disordered breathing on the intention-to-treat polysomnography night improved markedly with both treatments (Figure 2, *top*) although the improvement was greater with CPAP than MAD (Table 2). This was most evident in patients with severe OSA (*see* Figure E1 in online supplement). In total, nearly twice as many patients had complete resolution of their OSA with CPAP compared with MAD (Figure 2, *bottom*). In contrast, with MAD treatment patients reported longer sleep and higher compliance than with CPAP (Table 2). Higher compliance with MAD was consistently reported in mild, moderate, and severe OSA (*see* Figure E2). In patients where both objective and subjective CPAP compliance measures were available, objective compliance was slightly lower (objective, 4.68 ± 2 h per night; subjective, 5.1 ± 2 h per night; *P* < 0.001). Equivalent objective compliance data were not available for MAD treatment. Treatment preference results showed that 55 patients (51%) preferred MAD; 25 (23.1%) preferred CPAP; 23 (21.3%) preferred either; and 5 (4.6%) preferred neither.

### BP Outcomes

In the entire group, 24-hour ambulatory BP profiles (*see* Figure E3) showed a clear sleep-wake pattern during each treatment with no apparent between-treatment differences resulting in MAD being noninferior to CPAP for control of 24MAP (mean CPAP-MAD difference [95% confidence interval], 0.2 [–0.7 to 1.1] mm Hg). However, ultimately neither treatment lowered any BP from baseline in the entire group. In contrast, in the subgroup of patients who were initially hypertensive, there were consistent treatment-related 24-hour BP improvements of between 2 and 4 mm Hg in all indexes with neither treatment having a superior effect (Figure 3; *see* Table E1). Central BP measured during pulse wave analysis also remained unchanged in the entire group (*see* Table E2) but there were reductions from baseline in arterial stiffness (aortic augmentation index) of between 1% and 2% with no between-treatment differences.

### Neurobehavioral Outcomes

In contrast to BP, most neurobehavioral outcomes improved after both treatments (Table 3). In particular, there was no between-treatment difference in the improvement to subjective sleepiness (ESS) or in total and subscale measures of disease-specific QOL (FOSQ). However, MAD performed better than CPAP for improving four of eight SF-36 general QOL domains and the overall mental component score. Finally, speed deviation and reaction times to divided attention tasks during driving simulation improved to the same extent with both treatments. Figure 4 shows the ESS scores measured after acclimatization and treatment washout and after treatment (MAD or CPAP). Washout values were similar to baseline indicating a return to pretreatment sleepiness levels.

### DISCUSSION

This is the largest randomized trial comparing the two leading forms of treatment for OSA on a range of unrelated health outcomes. The study has addressed many deficits from previous trials that have examined these treatments in head-to-head comparisons. Although CPAP demonstrated superior efficacy in terms of AHI reduction, self-reported compliance with MAD treatment was higher. The resulting effects on clinically important OSA-related health outcomes were either equivalent between treatments or better with MAD. Notably, these outcomes were achieved in the context of moderate to severe OSA. Overall, the comparable impact of both treatments on health outcomes has potential implications for clinical practice and future research.

### Efficacy and Compliance

In all previous randomized trials that have directly compared CPAP with MAD, both treatments are shown to alleviate OSA but CPAP is consistently superior to MAD, particularly in patients with severe OSA (16, 19–26). In contrast, no studies have yet shown that nightly usage of CPAP is superior to MAD. In fact, results either favor MAD (16, 22) or do not favor either treatment (20, 21, 26). On this basis, we hypothesized that comparable outcomes between treatments would be achieved because the well-known superior efficacy of CPAP in alleviating OSA would be offset by inferior compliance relative to MAD. Indeed, our efficacy and compliance data and the resultant outcomes support this hypothesis. Finally, we have also confirmed the finding from most studies showing a clear patient preference for MAD therapy (20, 21, 23, 24, 27). These results are likely to have an important bearing on treatment effectiveness.

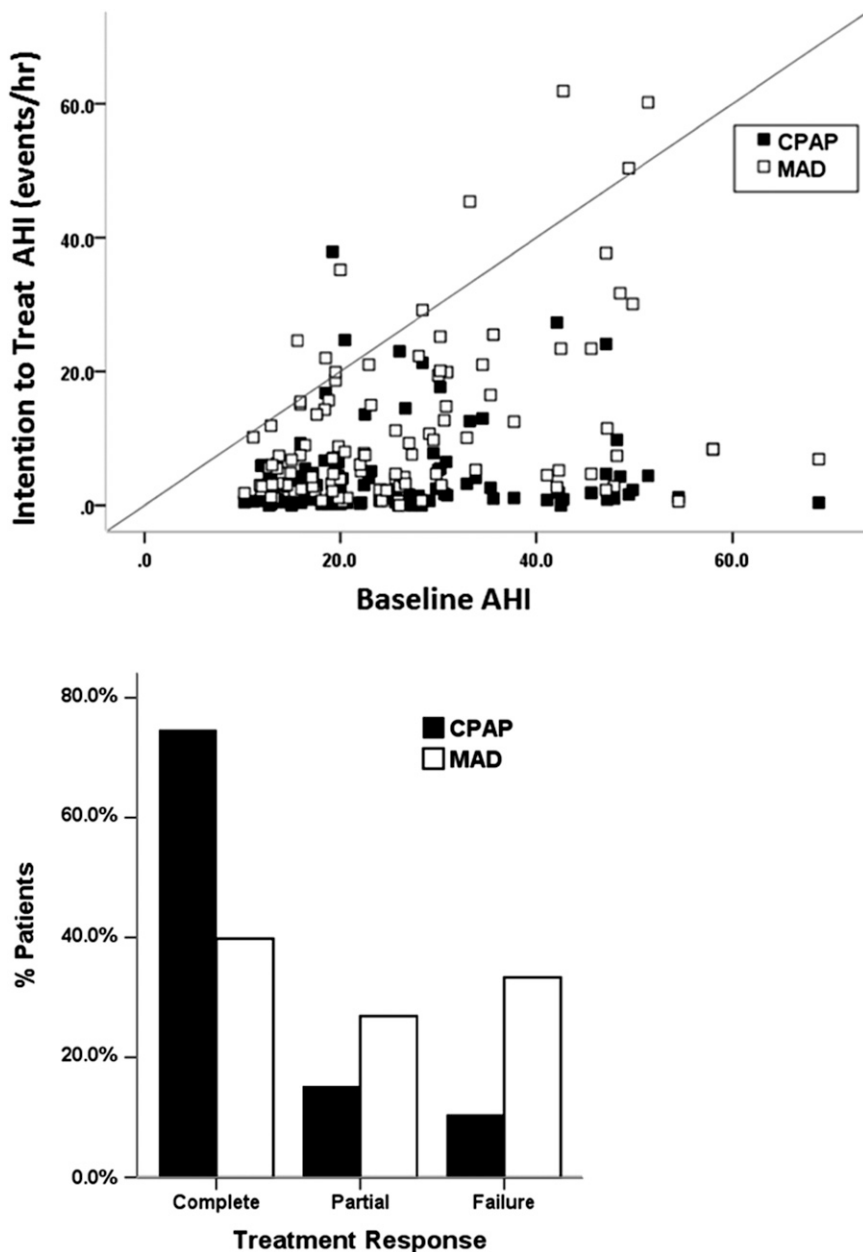


Figure 2. Overall treatment response. (Top) Baseline versus intention-to-treat apnea hypopnea index (AHI) for continuous positive airway pressure (CPAP) and mandibular advancement device (MAD). (Bottom) Treatment response based on intention-to-treat AHI for CPAP and MAD where complete response equals AHI reduced to less than five per hour, partial response equals AHI reduced by more than 50% but still more than five per hour, and failure equals AHI reduced by less than 50%. Intention-to-treat AHI data include all assessed patients regardless of treatment use on the night.

**BP and Arterial Stiffness**

In this trial we could only demonstrate clear improvements in BP in patients who were hypertensive at baseline. However, no improvements were evident with either treatment in the whole group. In this context, hypertensive status together with sleepiness, OSA severity, and treatment compliance have all been proposed to influence BP responses to treatment (39). Apart from hypertension, however, we do not believe that any of these other factors explain the lack of change in BP after treatment because we could not find any correlation between changes in any BP outcome with any of these factors (data not shown). The literature indicates that treatment-related improvements in BP are at best relatively small (2–3 mm Hg), even in patients with hypertension (32). It follows that demonstrating any BP improvement is difficult, particularly if the prevalence of untreated hypertension turns out to be lower than expected, as occurred in our study. However, we have demonstrated that both treatments were associated with small reductions in arterial stiffness and neither treatment proved superior. Arterial stiffness has increasingly

been shown to improve cardiovascular risk stratification (40, 41) and both uncontrolled (33, 42) and randomized controlled studies (43, 44) have shown improvements after CPAP. Overall, our results point to the need for further comparative effectiveness studies that specifically target patients with hypertension.

**Neurobehavioral Function and QOL**

Overall, this study has found that improvements with MAD in sleepiness, QOL, and driving simulator performance were as good as or better than CPAP. Previous studies that have compared subjective sleepiness and QOL after treatment with oral appliance and CPAP therapies have either favored CPAP (21, 24) or have shown similar effects between treatments (16, 23, 25, 26). However, in the studies that favored CPAP, nonadjustable oral appliances were used and these may have been inferior to fully adjustable models, as used in our study. We found in the whole group that neither treatment had a superior effect in reducing subjective sleepiness determined from the ESS score. Additional analyses in patients who were sleepy (ESS ≥10) or who had severe OSA (AHI >30)

**TABLE 2. INTENTION-TO-TREAT POLYSOMNOGRAPHY AND SELF-REPORTED COMPLIANCE**

Variable	Mean (SD) CPAP	Mean (SD) MAD	P Value
<b>Polysomnography</b>			
AHI, h <sup>-1</sup>	4.5 (6.6)	11.1 (12.1)	<0.0001
ODI 3%, h <sup>-1</sup>	6.0 (9.7)	9.0 (11.6)	0.0001
Min SpO <sub>2</sub> , %	90.6 (5.0)	87.2 (5.9)	<0.0001
SpO <sub>2</sub> T90, % total sleep time	5.8 (16.9)	6.6 (15.7)	0.04
Arousal index, h <sup>-1</sup>	16.6 (10.6)	19.2 (11.6)	0.02
Sleep latency, min	11.5 (15.7)	15.3 (21.3)	0.002
Sleep efficiency, %	82 (12)	82 (12)	0.9
<b>Diary data</b>			
Subj compliance, h/night	5.2 (2.0)	6.5 (1.3)	<0.0001
Subj sleep, h/night	6.9 (0.9)	7.1 (0.7)	0.005

*Definition of abbreviations:* AHI = apnea hypopnea index; compliance (h/night) = total hours of use divided by the number of nights with access to treatment; CPAP = continuous positive airway pressure; Min SpO<sub>2</sub> = minimum arterial oxygen saturation; ODI = oxygen desaturation index; SpO<sub>2</sub> T90 = % total sleep time below 90% arterial oxygen saturation; Subj = subjective (self-reported).

Polysomnography data include all assessed patients regardless of treatment use on the night.

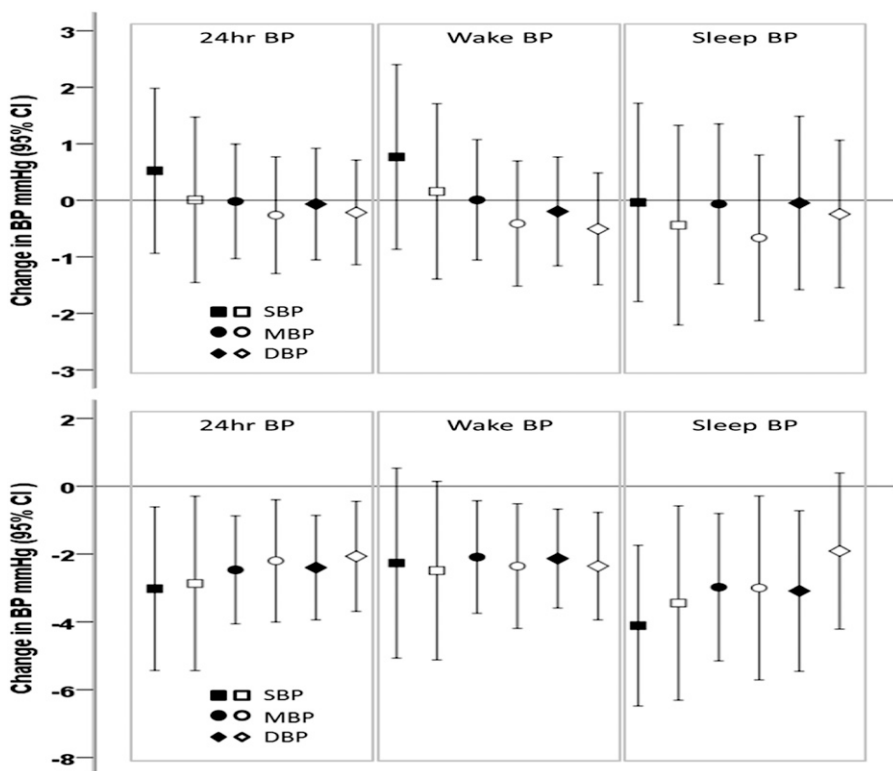
also indicated a comparable improvement between treatments (data not shown). Furthermore, neither treatment was superior for improving disease-specific QOL determined from the overall and subscale scores in the FOSQ. This is consistent with two other studies (16, 25). In contrast, our study is the first to show that MAD treatment was superior to CPAP for improving four of eight SF-36 domains. Finally, we have shown in over 100 patients that driving simulator performance improves equally between oral appliances and CPAP therapies. One small study examined driving simulator performance between 9 patients treated with oral appliances and 10 patients treated with CPAP and found a similar result (45). Hence, the data that suggest that CPAP treatment reduces the risk of motor vehicle crashes may also apply for MAD treatment (46). Overall, our data support more widespread use of MAD treatment for OSA.

**Study Strengths**

The variations in health outcomes found in previous trials comparing CPAP with MAD are likely caused by multiple factors. These include the exclusion in some studies of patients with severe OSA (16, 20, 22); small sample sizes (<50 patients) (19–23); high dropout rates (>20%) (16, 20); nonadjustable oral appliances (21); and suboptimal compliance with CPAP therapy (<4 h) (16). In addition, the acclimatization and optimization periods with each device may have varied from one patient to another but were often included as part of the treatment period (16, 19, 21, 22). Our trial was designed to address many of these deficiencies. In addition, we believe that our choice to power the study using a noninferiority design with mean BP as the outcome has given us some degree of confidence that we would have the statistical power to examine multiple clinically important health outcomes. We also deliberately enriched our study population with patients with moderate to severe OSA including those with associated comorbid hypertension and sleepiness. Our findings in this context suggest that the clinical role of MAD treatment should be extended beyond the currently accepted mild to moderate OSA range (American Academy of Sleep Medicine practice parameters [47]). Importantly, our protocol design ensured that all patients were fully acclimatized and optimally titrated with both devices over the same timeframe before commencing the interventions. Hence, every patient had equal opportunity for exposure to both treatments. Furthermore, we randomized the order of acclimatization and intervention to reduce the risk of compliance being altered by treatment order exposure. In the end we achieved an objective CPAP compliance (4.6 h) that was comparable or better than previous trials and despite the demanding protocol, our dropout rate was only 15%.

**Study Limitations**

There are several limitations that should be considered in relation to our study. First, we acknowledge that the interpretation of our results is limited to patients that are eligible and willing to trial both treatments. In this context we found that 20% of



**Figure 3.** Change from baseline in 24-hour blood pressure (BP) variables. Data represent mean differences from baseline (95% confidence interval [CI]) on continuous positive airway pressure (CPAP) (closed symbols) and mandibular advancement device (MAD) (open symbols) for the 24-hour wake and sleep periods. (Top) All completers (n = 108). (Bottom) Hypertensive completers (n = 45) where baseline hypertension was defined as 24-hour systolic blood pressure (SBP) greater than 130 and/or 24-hour diastolic blood pressure (DBP) greater than 80 mm Hg (54). MBP = mean blood pressure.

**TABLE 3. SLEEPINESS, QUALITY OF LIFE, AND DRIVING SIMULATOR PERFORMANCE (N = 108)**

Variable	Baseline Mean (SE)	CPAP Mean (SE)	MAD Mean (SE)	Mean Baseline – CPAP Difference (95% CI)	Mean Baseline – MAD Difference (95% CI)	Mean CPAP – MAD Difference (95% CI)
<b>Sleepiness and quality of life</b>						
ESS	9.1 (0.4)	7.5 (0.4)	7.2 (0.4)	1.6 (1.0 to 2.2)*	1.9 (1.4 to 2.5)*	0.31 (–0.2 to 0.9)
FOSQ	16.3 (0.2)	17.3 (0.2)	17.3 (0.2)	–1.0 (–1.4 to –0.6)*	–1.0 (–1.4 to –0.6)*	–0.03 (–0.4 to 0.3)
Activity	3.08 (0.06)	3.3 (0.05)	3.3 (0.05)	–0.21 (–0.31 to –0.12)*	–0.24 (–0.34 to –0.15)*	–0.03 (–0.4 to 0.3)
Vigilance	3.10 (0.06)	3.32 (0.05)	3.33 (0.06)	–0.21 (–0.30 to –0.13)*	–0.23 (–0.33 to –0.13)*	–0.02 (–0.1 to 0.06)
Intimacy	3.15 (0.08)	3.35 (0.08)	3.34 (0.08)	–0.20 (–0.35 to –0.05)†	–0.19 (–0.35 to –0.03)†	0 (–0.1 to 0.2)
Productivity	3.43 (0.04)	3.6 (0.04)	3.6 (0.04)	–0.17 (–0.26 to –0.09)*	–0.19 (–0.27 to –0.11)*	–0.02 (–0.09 to 0.06)
Social	3.57 (0.05)	3.76 (0.05)	3.73 (0.05)	–0.18 (–0.28 to –0.08)*	–0.15 (–0.26 to –0.05)*	0.03 (–0.07 to 0.13)
<b>SF-36</b>						
Physical function	82.3 (1.8)	83.7 (1.9)	84.7 (1.9)	–1.4 (–4.5 to 1.7)	–2.4 (–5.7 to 0.9)	–1.3 (–3.7 to 1.0)
Role physical	70.4 (3.4)	81.7 (3.2)	79.9 (2.9)	–11.3 (–17.6 to –5.1)*	–9.5 (–15.2 to –3.7)*	1.9 (–4.6 to 8.3)
Bodily pain	76.5 (2.2)	76.2 (2.1)	81 (1.9)	0.3 (–4.2 to 4.8)	–4.5 (–8.4 to –0.5)†	–4.8 (–8.4 to –1.2)†
General health	63.1 (2.0)	65.7 (1.9)	67.4 (2.0)	–2.6 (–5.5 to 0.3)	–4.3 (–7.0 to –1.6)*	–1.7 (–4.1 to 0.7)
Vitality	48.9 (2.1)	56.3 (2.2)	60.1 (2.0)	–7.4 (–10.8 to –3.9)*	–11.2 (–14.8 to –7.6)*	–3.8 (–7.7 to –0.2)†
Social function	77.6 (2.3)	79.7 (2.2)	84.8 (1.8)	–2.1 (–6.1 to 1.9)	–7.2 (–10.9 to –3.5)*	–5.1 (–8.9 to –1.3)*
Role emotional	65.1 (4)	78.8 (3.3)	81.6 (2.9)	–13.7 (–21.7 to –5.7)*	–16.5 (–23.5 to –9.5)*	–2.8 (–8.4 to 2.8)
Mental health	71.7 (1.5)	72.6 (1.6)	75.3 (1.5)	–1.0 (–3.5 to 1.6)	–3.6 (–5.9 to –1.3)*	–2.6 (–5.1 to –0.2)†
Physical component	68.1 (1.8)	72.6 (1.7)	74.4 (1.6)	–4.4 (–7.0 to –1.9)*	–6.3 (–8.9 to –3.7)*	–2.0 (–4.5 to 0.6)
Mental component	71.5 (2.2)	77.1 (2)	80.6 (1.8)	–5.6 (–9.4 to –1.7)*	–9.1 (–12.4 to –5.7)*	–3.5 (–6.7 to –0.3)†
<b>AusEd driving</b>						
Mean RT to DAT, s	1.05 (0.03)	0.98 (0.03)	0.97 (0.03)	0.07 (0.007 to 0.13)†	0.07 (0.02 to 0.13)†	0.004 (–0.05 to 0.06)
Lapses	0.16 (0.06)	0.32 (0.15)	0.26 (0.12)	–0.16 (–0.47 to 0.15)	–0.11 (–0.34 to 0.13)	0.06 (–0.06 to 1.8)
Crashes	0.25 (0.09)	0.22 (0.06)	0.14 (0.04)	0.03 (–0.13 to 0.19)	0.12 (–0.04 to 0.27)	0.1 (–0.04 to 0.24)
Mean lane deviation, cm	59.1 (2.3)	59.6 (2.3)	58.7 (2.4)	–0.51 (–4.1 to 3.0)	0.4 (–2.9 to 3.7)	1.01 (–1.7 to 3.7)
Mean speed deviation	3.0 (0.26)	2.39 (0.18)	2.45 (0.20)	0.62 (0.31 to 0.93)*	0.56 (0.15 to 0.96)*	–0.04 (–0.31 to 0.22)

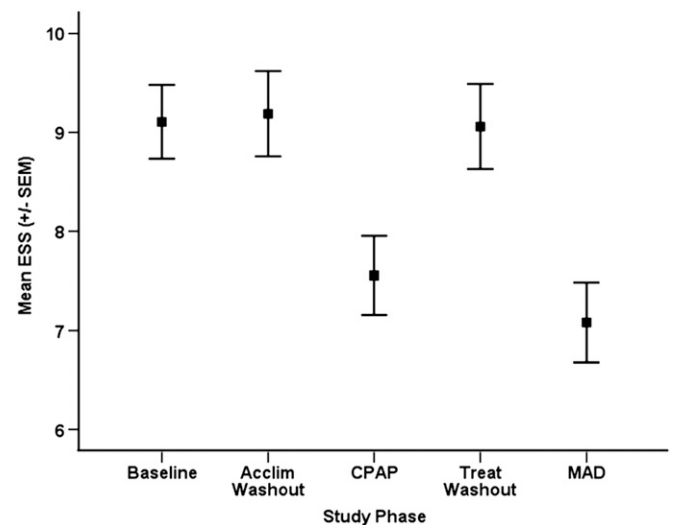
Definition of abbreviations: CI = confidence interval; CPAP = continuous positive airway pressure; ESS = Epworth Sleepiness Score; FOSQ = Functional Outcomes of Sleep Questionnaire; MAD = mandibular advancement device; RT to DAT = reaction time to divided attention task; SF-36 = Short Form-36.

\* P < 0.01.  
† P < 0.05.

assessed patients were not eligible for trialing MAD, whereas all patients were able to trial CPAP. We also recognize that we had no objective measure of MAD compliance, because this was not available at the time the study was conducted. We have therefore assumed that the small discrepancy between objective and subjective CPAP compliance would be similar with MAD, making a between-treatment comparison of self-reported compliance valid. In fact, new research using a novel technology for measuring long-term objective MAD compliance (48) has found no difference between objective and subjective compliance. This may indicate that our MAD-CPAP compliance difference was underestimated making the true night-night residual AHI more equal between treatments. Furthermore, we acknowledge that our measure of treatment efficacy (on-treatment AHI) may be slightly underestimated during polysomnography because there were a small number of patients whose AHI was largely determined without CPAP or MAD treatment. This was despite all patients being strongly encouraged to use treatment on the night of polysomnography. It is also possible that the use of auto CPAP titration followed by fixed pressure treatment may have resulted in suboptimal efficacy (AHI reduction) and/or compliance. However, comparable improvements in OSA have previously been shown when comparing auto with manual titration (49) and compliance with auto versus fixed CPAP has been shown to be similar (50). In our study, the AHI on CPAP during the end of treatment polysomnography was 4.5 events per hour and overall objective compliance was 4.7 hours. Hence, we do not believe that efficacy or compliance was compromised by our approach to CPAP titration or the use of a fixed pressure. In fact, we chose to use a fixed pressure because it may be more effective in lowering BP (51).

In this study we found that overall neither treatment seemed to improve BP from baseline, which likely relates to the normotensive status of most participants. This then limits the ability to claim true noninferiority for BP control. Regardless, we believe our decision to pursue a noninferiority analysis for BP was well

founded. Noninferiority designs rely on the premise that the active control (in this case CPAP) has superior efficacy to placebo as established in previous trials (52). Based on meta-analyses of randomized trials (12, 53), we believed this has been adequately demonstrated, even in trials in which elevated BP was not a specific inclusion criterion (17, 38), which was the case in this study. It could also be argued that our treatment periods were relatively short, limiting the impact on BP. However, studies using similar treatment periods have reported significant treatment effects. Ultimately our crossover design made the study challenging and time



**Figure 4.** Epworth Sleepiness Score (ESS) at baseline, after continuous positive airway pressure (CPAP) or mandibular advancement device (MAD) treatment, and after acclimatization and treatment washout periods.

consuming for our patients and extending the treatment periods would have negatively impacted the feasibility of completing such a large study. The finding of a significant treatment effect among patients who were hypertensive at baseline is an indication that the treatment period was of sufficient duration. Furthermore, we observed very clear therapeutic effects from each treatment for important neurobehavioral and QOL outcomes that were either comparable or favored MAD. Sleepiness, which is arguably the main factor motivating patients to seek OSA treatment, showed clear clinical improvement and deterioration after initiation and withdrawal of either treatment. Finally, we cannot claim that the improvements in health outcomes would be sustained in the long term, or indeed whether BP may deteriorate because of partially effective treatment. Further long-term studies with objective assessment of compliance with both devices will clarify how true night-to-night residual OSA impacts on health outcomes.

## Conclusions

This short-term study has demonstrated that the health outcomes in patients with moderate to severe OSA were similar after treatment with CPAP and MAD. The results are likely explained by the greater efficacy of CPAP being offset by inferior compliance relative to MAD resulting in a similar "treatment" AHI with each device. These findings strongly challenge current practice parameters that recommend that MAD treatment should only be considered in patients with mild to moderate OSA or in those who have failed or refuse CPAP treatment. Our findings provide a strong rationale for a long-term comparative effectiveness study of these two treatment modalities. It is hoped that such studies will allow a rigorous evidence-based approach to changing current treatment recommendations.

**Author disclosures** are available with the text of this article at [www.atsjournals.org](http://www.atsjournals.org).

**Acknowledgment:** The authors thank Woolcock Institute staff members Amanda Greenwood and Nancy Nguyen for their invaluable input into the running of this trial and Dr. Wei Xuan for statistical advice. They also thank Drs. Oyku Dalci and Nour Eldin Taraf from Sydney Dental Hospital and continuous positive airway pressure therapists Dianne Richards, Gislaine Gauthier, and Vivienne Jacobs.

## References

- Young T, Peppard PE, Taheri S. Excess weight and sleep-disordered breathing. *J Appl Physiol* 2005;99:1592–1599.
- Tregear S, Reston J, Schoelles K, Phillips B. Obstructive sleep apnea and risk of motor vehicle crash: systematic review and meta-analysis. *J Clin Sleep Med* 2009;5:573–581.
- Yaffe K, Laffan AM, Harrison SL, Redline S, Spira AP, Ensrud KE, Ancoli-Israel S, Stone KL. Sleep-disordered breathing, hypoxia, and risk of mild cognitive impairment and dementia in older women. *JAMA* 2011;306:613–619.
- Young T, Finn L, Peppard P, Szklo-Coxe M, Austin D, Nieto FJ, Stubbs R, Hla KM. Sleep disordered breathing and mortality: eighteen-year follow-up of the Wisconsin sleep cohort. *Sleep* 2008;31:1071–1078.
- Gottlieb DJ, Yenokyan G, Newman AB, O'Connor GT, Punjabi NM, Quan SF, Redline S, Resnick HE, Tong EK, Diener-West M, et al. Prospective study of obstructive sleep apnea and incident coronary heart disease and heart failure. The Sleep Heart Health Study. *Circulation* 2010;122:352–360.
- Redline S, Yenokyan G, Gottlieb DJ, Shahar E, O'Connor GT, Resnick HE, Diener-West M, Sanders MH, Wolf PA, Geraghty EM, et al. Obstructive sleep apnea hypopnea and incident stroke: the Sleep Heart Health Study. *Am J Respir Crit Care Med* 2010;182:269–277.
- Hillman DR, Murphy AS, Pezzullo L. The economic cost of sleep disorders. *Sleep* 2006;29:299–305.
- Jennum P, Kjellberg J. Health, social and economical consequences of sleep-disordered breathing: a controlled national study. *Thorax* 2011;66:560–566.
- Sullivan C, Berthon-Jones M, Issa F, Eves L. Reversal of obstructive sleep apnoea by continuous positive airway pressure applied through the nares. *Lancet* 1981;317:862–865.
- McDaid C, Durée KH, Griffin SC, Weatherly HL, Stradling JR, Davies RJ, Sculpher MJ, Westwood ME. A systematic review of continuous positive airway pressure for obstructive sleep apnoea-hypopnoea syndrome. *Sleep Med Rev* 2009;13:427–436.
- Giles TL, Lasserson TJ, Smith BH, White J, Wright J, Cates CJ. Continuous positive airways pressure for obstructive sleep apnoea in adults. *Cochrane Database Syst Rev* 2006;3:CD001106.
- Bazzano LA, Khan Z, Reynolds K, He J. Effect of nocturnal nasal continuous positive airway pressure on blood pressure in obstructive sleep apnea. *Hypertension* 2007;50:417–423.
- Antonopoulos CN, Sergentanis TN, Daskalopoulou SS, Petridou ET. Nasal continuous positive airway pressure (nCPAP) treatment for obstructive sleep apnea, road traffic accidents and driving simulator performance: a meta-analysis. *Sleep Med Rev* 2011;15:301–310.
- Marin JM, Carrizo SJ, Vicente E, Agusti AG. Long-term cardiovascular outcomes in men with obstructive sleep apnoea-hypopnoea with or without treatment with continuous positive airway pressure: an observational study. *Lancet* 2005;365:1046–1053.
- Weaver TE, Grunstein RR. Adherence to continuous positive airway pressure therapy: the challenge to effective treatment. *Proc Am Thorac Soc* 2008;5:173–178.
- Barnes M, McEvoy RD, Banks S, Tarquinio N, Murray CG, Vowles N, Pierce RJ. Efficacy of positive airway pressure and oral appliance in mild to moderate obstructive sleep apnea. *Am J Respir Crit Care Med* 2004;170:656–664.
- Gotsopoulos H, Kelly JJ, Cistulli PA. Oral appliance therapy reduces blood pressure in obstructive sleep apnea: a randomized, controlled trial. *Sleep* 2004;27:934–941.
- Naismith SL, Winter VR, Hickie IB, Cistulli PA. Effect of oral appliance therapy on neurobehavioral functioning in obstructive sleep apnea: a randomized controlled trial. *J Clin Sleep Med* 2005;1:374–380.
- Clark GT, Blumenfeld I, Yoffe N, Peled E, Lavie P. A crossover study comparing the efficacy of continuous positive airway pressure with anterior mandibular positioning devices on patients with obstructive sleep apnea. *Chest* 1996;109:1477–1483.
- Ferguson KA, Ono T, Lowe AA, Keenan SP, Fleetham JA. A randomized crossover study of an oral appliance vs nasal-continuous positive airway pressure in the treatment of mild-moderate obstructive sleep apnea. *Chest* 1996;109:1269–1275.
- Engleman HM, McDonald JP, Graham D, Lello GE, Kingshott RN, Coleman EL, Mackay TW, Douglas NJ. Randomized crossover trial of two treatments for sleep apnea/hypopnea syndrome: continuous positive airway pressure and mandibular repositioning splint. *Am J Respir Crit Care Med* 2002;166:855–859.
- Randerath WJ, Heise M, Hinz R, Ruehle KH. An individually adjustable oral appliance vs continuous positive airway pressure in mild-to-moderate obstructive sleep apnea syndrome. *Chest* 2002;122:569–575.
- Tan YK, L'Estrange PR, Luo YM, Smith C, Grant HR, Simonds AK, Spiro SG, Battagel JM. Mandibular advancement splints and continuous positive airway pressure in patients with obstructive sleep apnoea: a randomized crossover trial. *Eur J Orthod* 2002;24:239–249.
- Lam B, Sam K, Mok WY, Cheung MT, Fong DY, Lam JC, Lam DC, Yam LY, Ip MS. Randomised study of three non-surgical treatments in mild to moderate obstructive sleep apnoea. *Thorax* 2007;62:354–359.
- Hoekema A, Stegenga B, Wijkstra PJ, van der Hoeven JH, Meinesz AF, de Bont LGM. Obstructive sleep apnea therapy. *J Dent Res* 2008;87:882–887.
- Gagnadoux F, Fleury B, Vielle B, Petelle B, Meslier N, N'Guyen XL, Trzepizur W, Racineux JL. Titrated mandibular advancement versus positive airway pressure for sleep apnoea. *Eur Respir J* 2009;34:914–920.
- Phillips CL, Grunstein RR, Darendeliler MA, Mihailidou SM, Srinivasan VK, Yee BJ, Marks GB, Cistulli PA. A comparative effectiveness trial of continuous positive airway pressure (CPAP) versus oral appliance (OA) therapy in obstructive sleep apnea (OSA) [abstract]. *Sleep Biol Rhythms* 2011;9:294.
- Phillips CL, Grunstein RR, Darendeliler MA, Mihailidou SM, Srinivasan VK, Yee BJ, Marks GB, Cistulli PA. A comparative effectiveness trial of continuous positive airway pressure (CPAP) versus oral appliance (OA) therapy in obstructive sleep apnea (OSA) [abstract]. *J Sleep Res* 2011;20:21.
- Anonymous. Sleep-related breathing disorders in adults: recommendations for syndrome definition and measurement techniques in clinical research.



- The Report of an American Academy of Sleep Medicine Task Force. *Sleep* 1999;22:667–689 [see comment].
30. Mehta A, Qian J, Petocz P, Darendeliler MA, Cistulli PA. Randomized, controlled study of a mandibular advancement splint for obstructive sleep apnea. *Am J Respir Crit Care Med* 2001;163:1457–1461.
  31. Gotsopoulos H, Chen C, Qian J, Cistulli PA. Oral appliance therapy improves symptoms in obstructive sleep apnea: a randomized, controlled trial. *Am J Respir Crit Care Med* 2002;166:743–748.
  32. Duran-Cantolla J, Aizpuru F, Montserrat JM, Ballester E, Teran-Santos J, Aguirregomoscorta JL, Gonzalez M, Lloberes P, Masa JF, De La Pena M, *et al.* Continuous positive airway pressure as treatment for systemic hypertension in people with obstructive sleep apnoea: randomised controlled trial. *BMJ* 2010;341:c5991.
  33. Phillips CL, Yee B, Yang Q, Villaneuva AT, Hedner J, Berend N, Grunstein R. Effects of continuous positive airway pressure treatment and withdrawal in patients with obstructive sleep apnea on arterial stiffness and central BP. *Chest* 2008;134:94–100.
  34. Weaver TE, Laizner AM, Evans LK, Maislin G, Chugh DK, Lyon K, Smith PL, Schwartz AR, Redline S, Pack AI, *et al.* An instrument to measure functional status outcomes for disorders of excessive sleepiness. *Sleep* 1997;20:835–843.
  35. Ware JE Jr, Sherbourne CD. The MOS 36-item short-form health survey (SF-36). I. Conceptual framework and item selection. *Med Care* 1992;30:473–483.
  36. Johns MW. A new method for measuring daytime sleepiness: the Epworth Sleepiness Scale. *Sleep* 1991;14:540–545.
  37. Desai AV, Wilmore B, Bartlett DJ, Unger G, Constable B, Joffe D, Grunstein RR. The utility of the AusEd driving simulator in the clinical assessment of driver fatigue. *Behav Res Methods* 2007;39:673–681.
  38. Pepperell JCT, Ramdassingh-Dow S, Crosthwaite N, Mullins R, Jenkinson C, Stradling JR, Davies RJ. Ambulatory blood pressure after therapeutic and subtherapeutic nasal continuous positive airway pressure for obstructive sleep apnoea: a randomised parallel trial. *Lancet* 2002;359:204–210.
  39. Durán-Cantolla J, Aizpuru F, Martínez-Null C, Barbé-Illa F. Obstructive sleep apnea/hypopnea and systemic hypertension. *Sleep Med Rev* 2009;13:323–331.
  40. Vlachopoulos C, Aznaouridis K, O'Rourke MF, Safar ME, Baou K, Stefanadis C. Prediction of cardiovascular events and all-cause mortality with central haemodynamics: a systematic review and meta-analysis. *Eur Heart J* 2010;31:1865–1871.
  41. Vlachopoulos C, Aznaouridis K, Stefanadis C. Prediction of cardiovascular events and all-cause mortality with arterial stiffness: a systematic review and meta-analysis. *J Am Coll Cardiol* 2010;55:1318–1327.
  42. Buchner N, Quack I, Stegbauer J, Woznowski M, Kaufmann A, Rump L. Treatment of obstructive sleep apnea reduces arterial stiffness. *Sleep Breath* 2011;16:123–133.
  43. Drager LF, Bortolotto LA, Figueiredo AC, Krieger EM, Lorenzi-Filho G. Effects of continuous positive airway pressure on early signs of atherosclerosis in obstructive sleep apnea. *Am J Respir Crit Care Med* 2007;176:706–712.
  44. Kohler M, Pepperell JCT, Casadei B, Craig S, Crosthwaite N, Stradling JR, Davies RJ. CPAP and measures of cardiovascular risk in males with OSAS. *Eur Respir J* 2008;32:1488–1496.
  45. Hoekema A, Stegenga B, Bakker M, Brouwer WH, de Bont LG, Wijkstra PJ, van der Hoeven JH. Simulated driving in obstructive sleep apnoea-hypopnoea; effects of oral appliances and continuous positive airway pressure. *Sleep Breath* 2007;11:129–138.
  46. Tregear S, Reston J, Schoelles K, Phillips B. Continuous positive airway pressure reduces risk of motor vehicle crash among drivers with obstructive sleep apnea: systematic review and meta-analysis. *Sleep* 2010;33:1373–1380.
  47. Epstein LJ, Kristo D, Strollo PJ Jr, Friedman N, Malhotra A, Patil SP, Ramar K, Rogers R, Schwab RJ, Weaver EM, *et al.* Clinical guideline for the evaluation, management and long-term care of obstructive sleep apnea in adults. *J Clin Sleep Med* 2009;5:263–276.
  48. Vanderveken OM, Dieltjens M, Wouters K, De Backer WA, Van de Heyning PH, Braem MJ. Objective measurement of compliance during oral appliance therapy for sleep-disordered breathing. *Thorax* 2013;68:91–96.
  49. Masa JF, Jimenez A, Duran J, Capote F, Monasterio C, Mayos M, Teran J, Hernandez L, Barbe F, Maimo A, *et al.* Alternative methods of titrating continuous positive airway pressure: a large multicenter study. *Am J Respir Crit Care Med* 2004;170:1218–1224.
  50. Vennelle M, White S, Riha RL, Mackay TW, Engleman HM, Douglas NJ. Randomized controlled trial of variable-pressure versus fixed-pressure continuous positive airway pressure (CPAP) treatment for patients with obstructive sleep apnea/hypopnea syndrome (OSAHS). *Sleep* 2010;33:267–271.
  51. Patruno V, Aiolfi S, Costantino G, Murgia R, Selmi C, Malliani A, Montano N. Fixed and autoadjusting continuous positive airway pressure treatments are not similar in reducing cardiovascular risk factors in patients with obstructive sleep apnea. *Chest* 2007;131:1393–1399.
  52. Gombert-Maitland M, Frison L, Halperin JL. Active-control clinical trials to establish equivalence or noninferiority: methodological and statistical concepts linked to quality. *Am Heart J* 2003;146:398–403.
  53. Haentjens P, Van Meerhaeghe A, Moscariello A, De Weerdts S, Poppe K, Dupont A, Velkeniers B. The impact of continuous positive airway pressure on blood pressure in patients with obstructive sleep apnea syndrome: evidence from a meta-analysis of placebo-controlled randomized trials. *Arch Intern Med* 2007;167:757–764.
  54. Mancia G, De Backer G, Dominiczak A, Cifkova R, Fagard R, Germano G, Grassi G, Heagerty AM, Kjeldsen SE, Laurent S, *et al.* 2007 guidelines for the management of arterial hypertension: the Task Force for the Management of Arterial Hypertension of the European Society of Hypertension (ESH) and of the European Society of Cardiology (ESC). *J Hypertens* 2007;25:1105–1187.