

# Cone Beam Computed Tomography Anatomy



UNIVERSITY  
OF MANITOBA

Rady Faculty of  
Health Sciences

# Lecture Objectives:



## Identify normal anatomy in CBCT:

- AXIAL SLICES
- CORONAL SLICES
- SAGITTAL SLICES



UNIVERSITY  
OF MANITOBA

Rady Faculty of  
Health Sciences

# Presenter Disclosure

- **Faculty Member:** Dr. Meredith Brownlee
- **Relationships with commercial interests:**
  - None to report

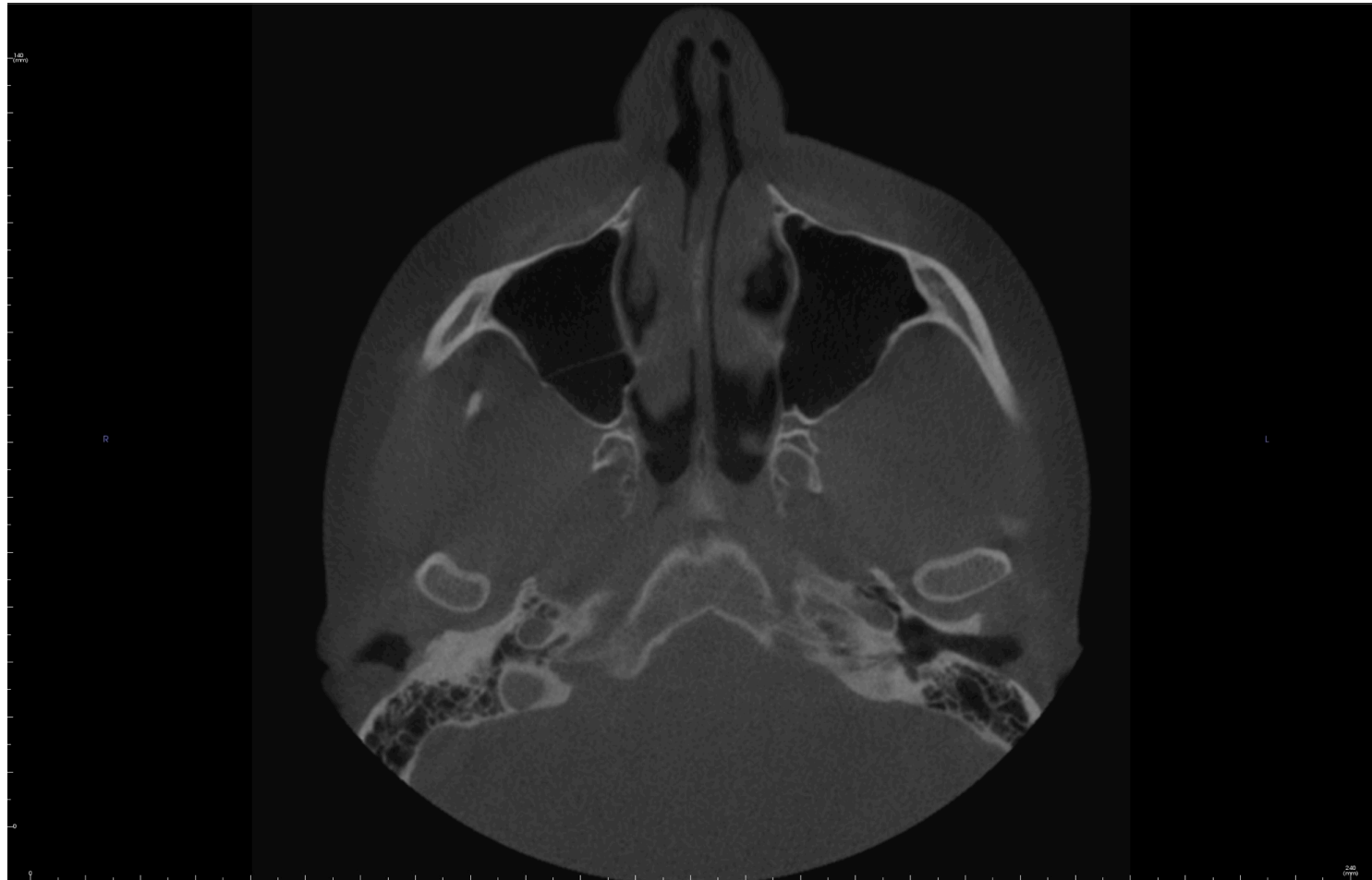


# Anatomy Resources:

- [www.headneckbrainspine.com](http://www.headneckbrainspine.com)
- [www.eskeleton.org](http://www.eskeleton.org)
- [www.anatomyzone.com](http://www.anatomyzone.com)
- [www.netterimages.com](http://www.netterimages.com)
- Many more, just google anatomy...



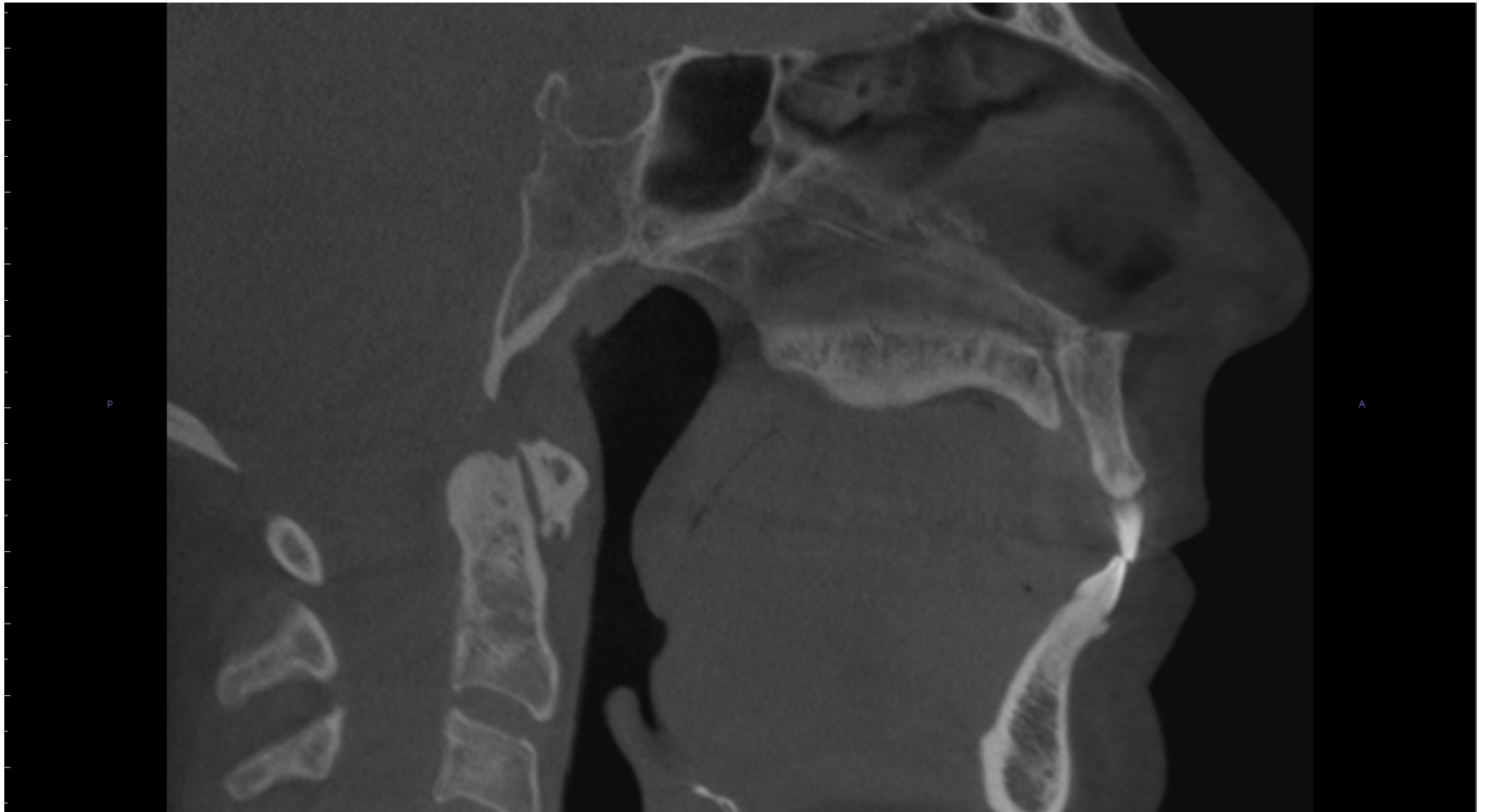
# Axial Slice Anatomical Features



# Coronal Slices



# Sagittal Slice Anatomical Features



# Questions?

All images in this lecture are  
sourced and/or credited to Dr.  
Meredith Brownlee

