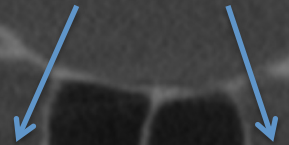
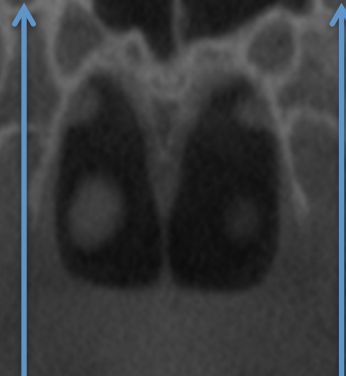


120  
(mm)

Superior orbital fissures



Foramina rotundum



R

L

200  
(mm)



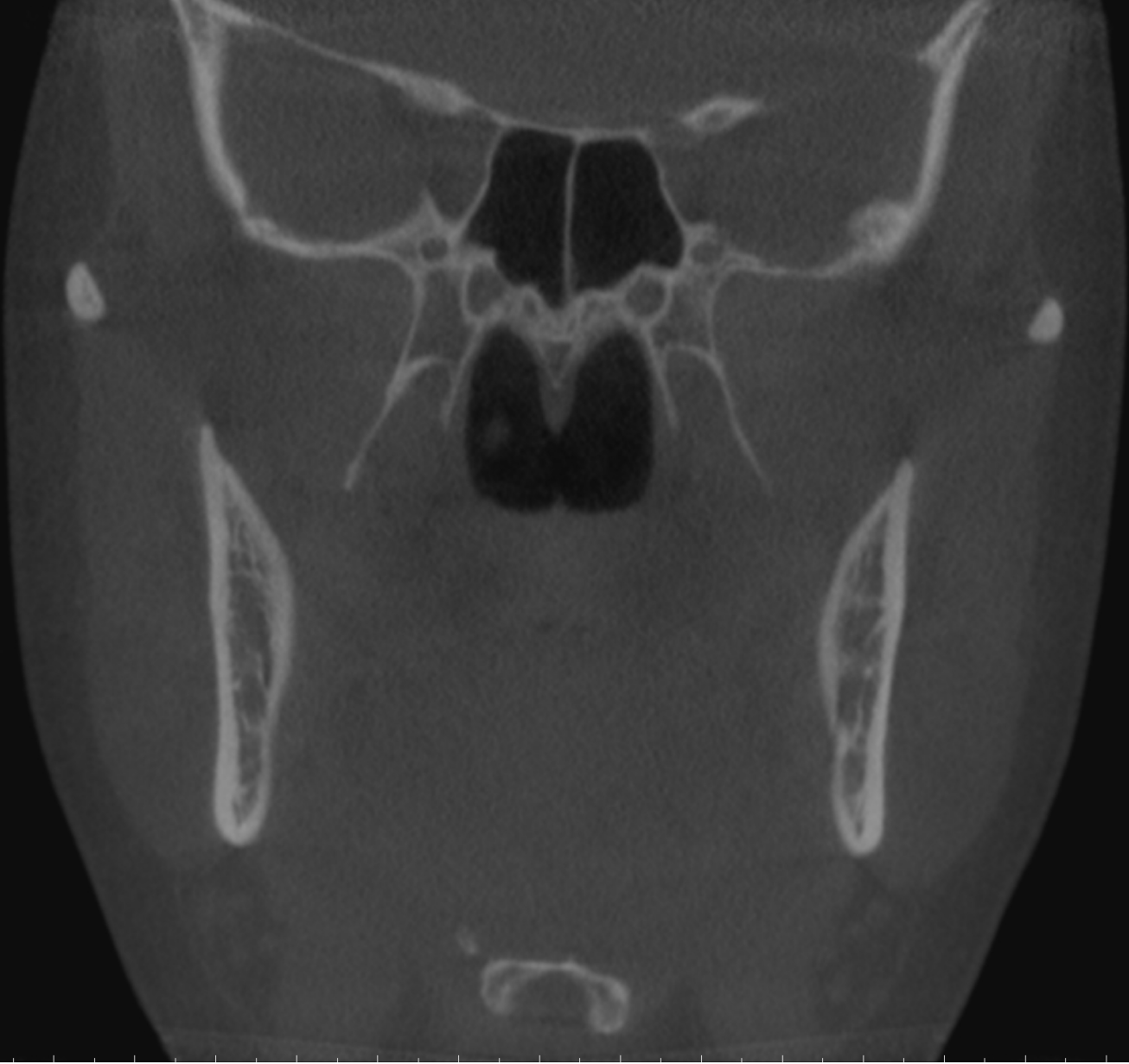
UNIVERSITY  
OF MANITOBA

Rady Faculty of  
Health Sciences

120  
(mm)

R

L



200  
(mm)

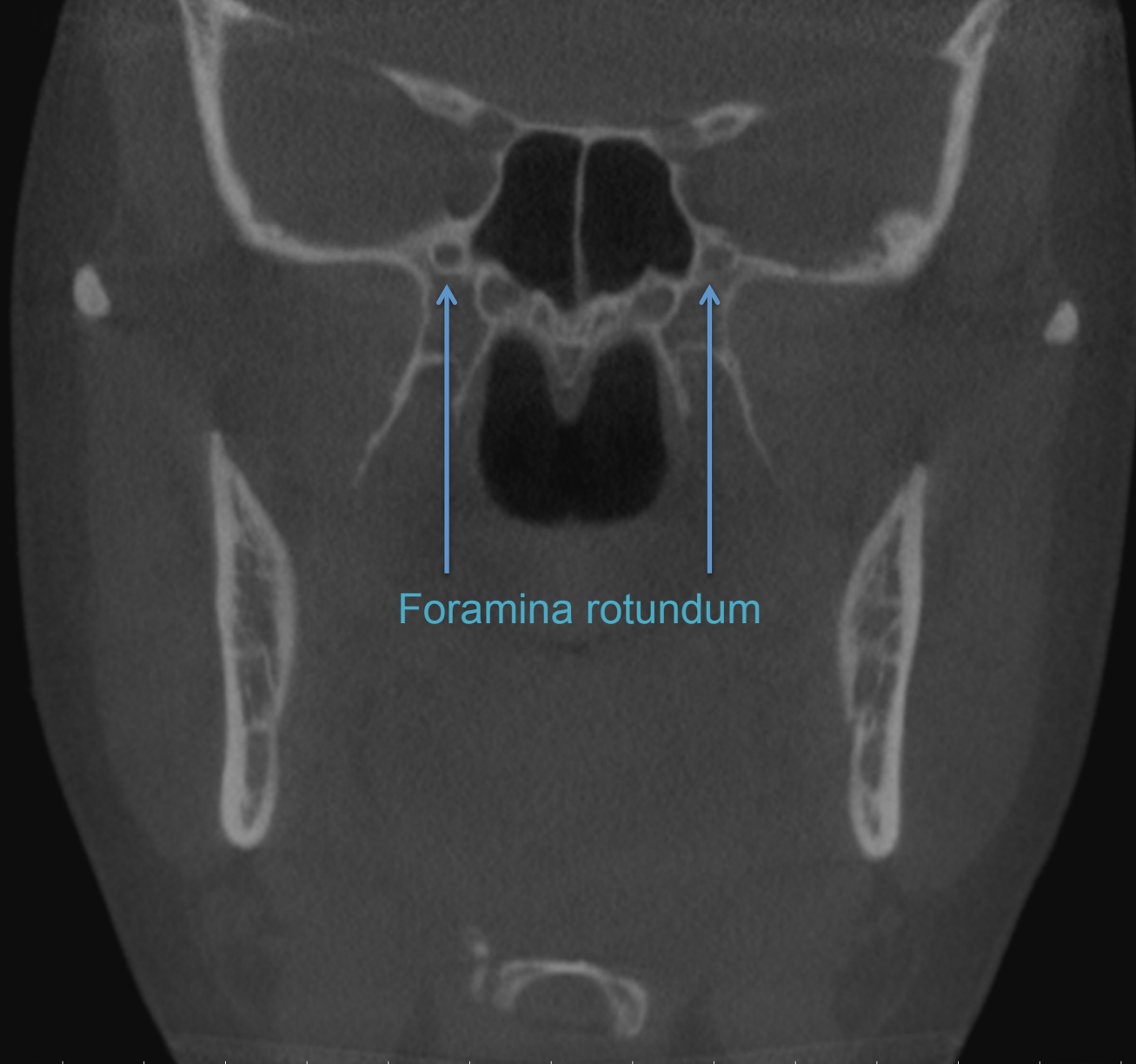


UNIVERSITY  
OF MANITOBA

Rady Faculty of  
Health Sciences

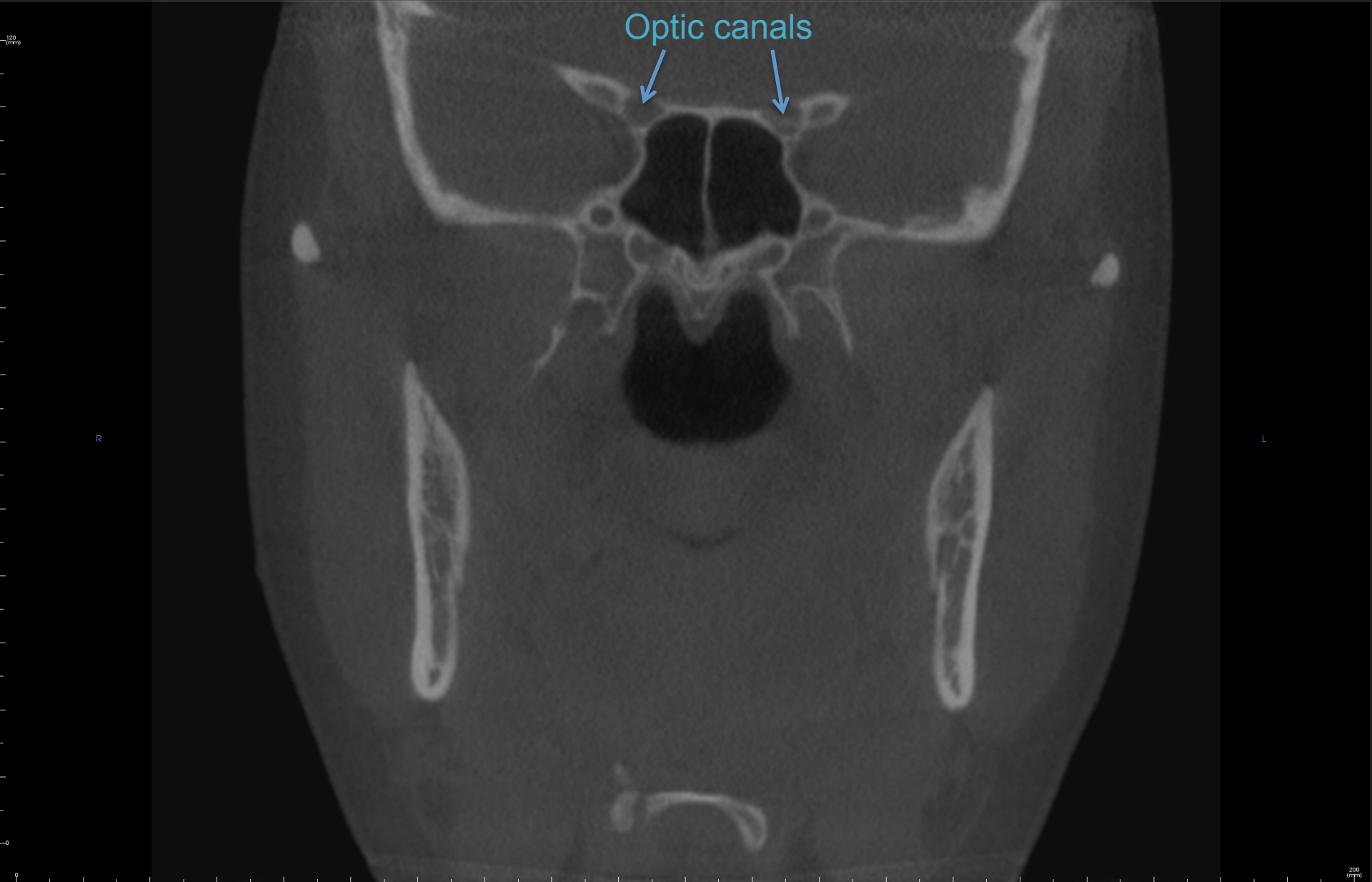
R

L



Foramina rotundum





UNIVERSITY  
OF MANITOBA

Rady Faculty of  
Health Sciences

120  
(mm)

R

L

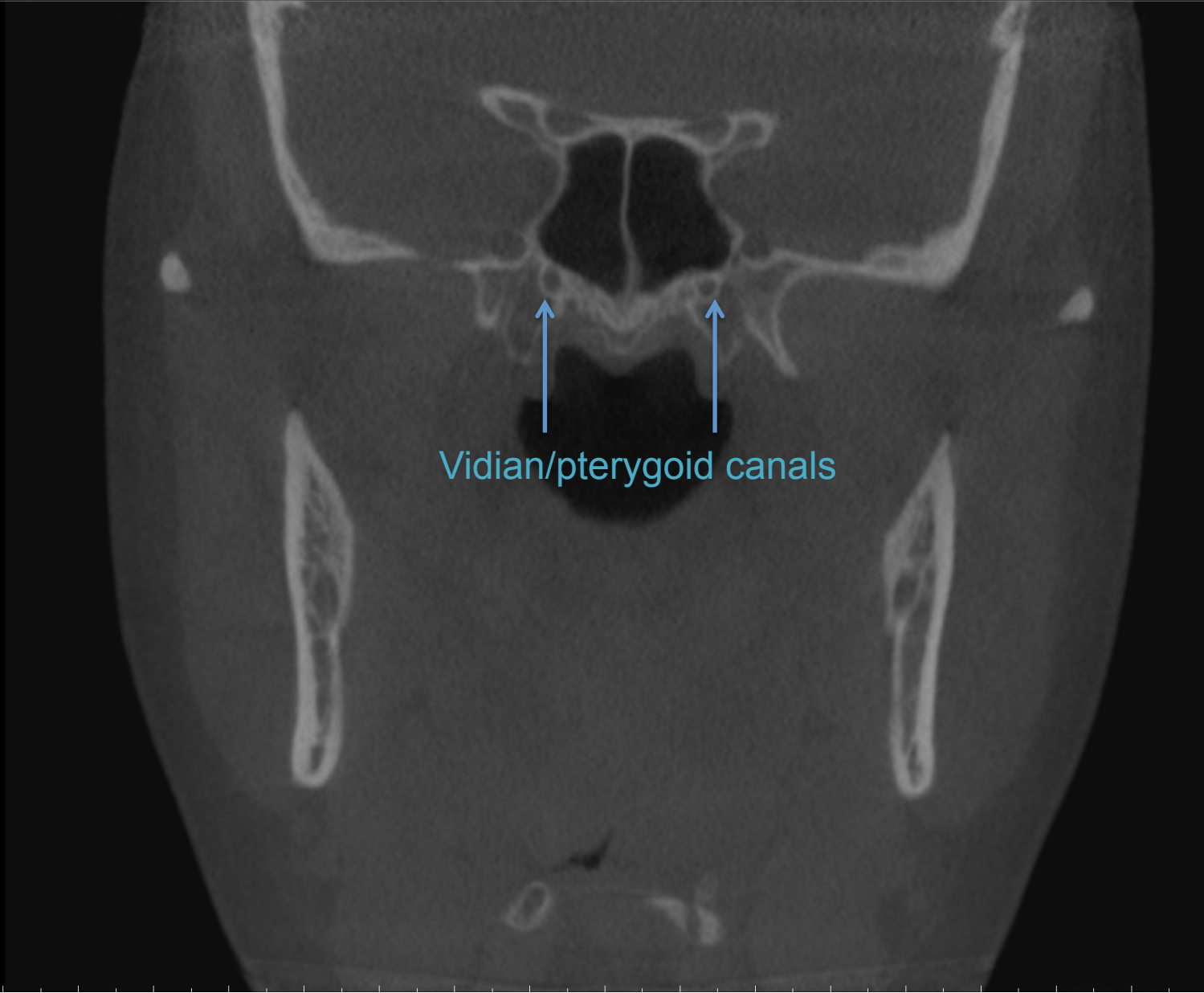


200  
(mm)



UNIVERSITY  
OF MANITOBA

Rady Faculty of  
Health Sciences



Vidian/pterygoid canals



UNIVERSITY  
OF MANITOBA

Rady Faculty of  
Health Sciences

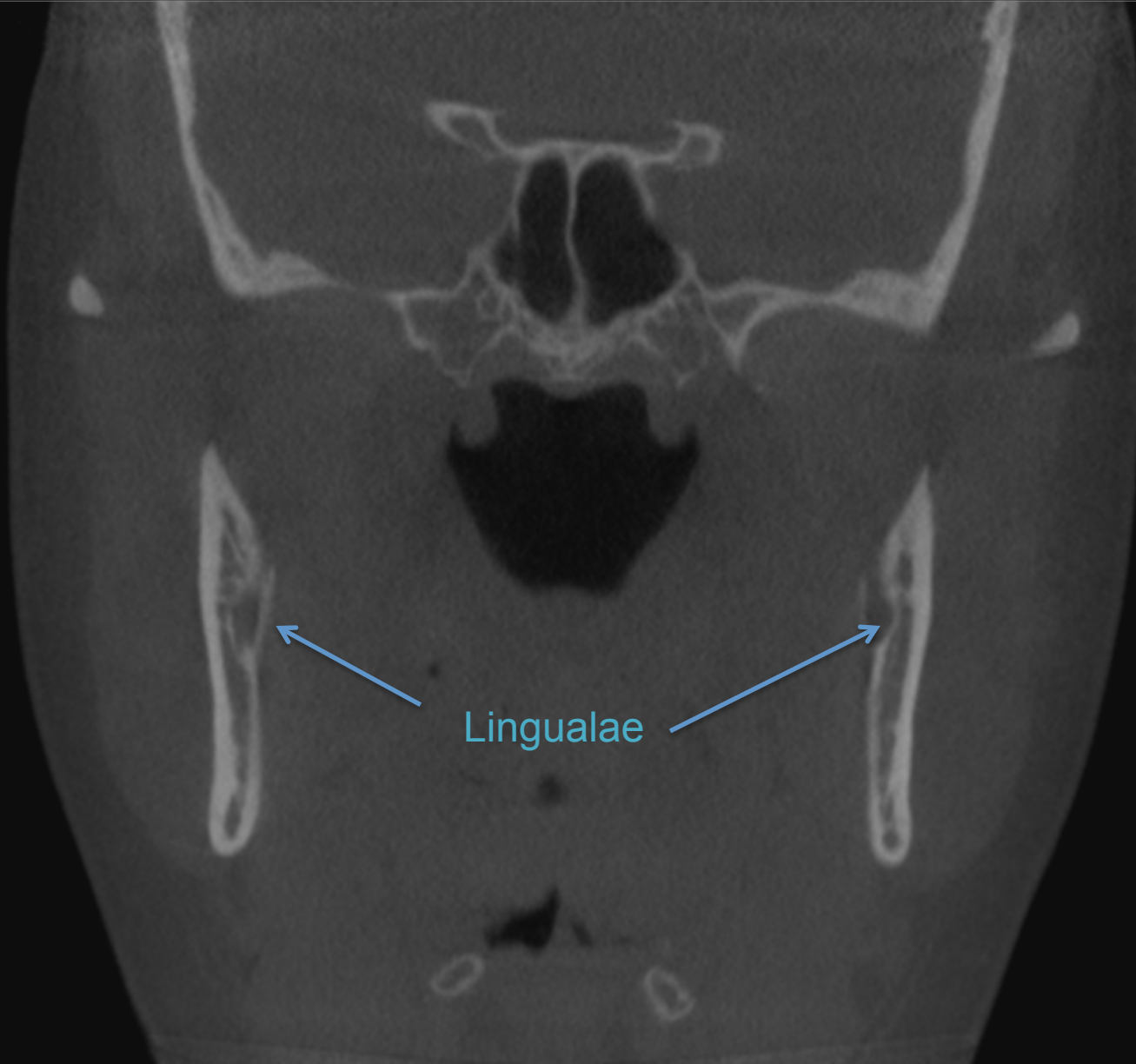


UNIVERSITY  
OF MANITOBA

Rady Faculty of  
Health Sciences

R

L



Lingualae

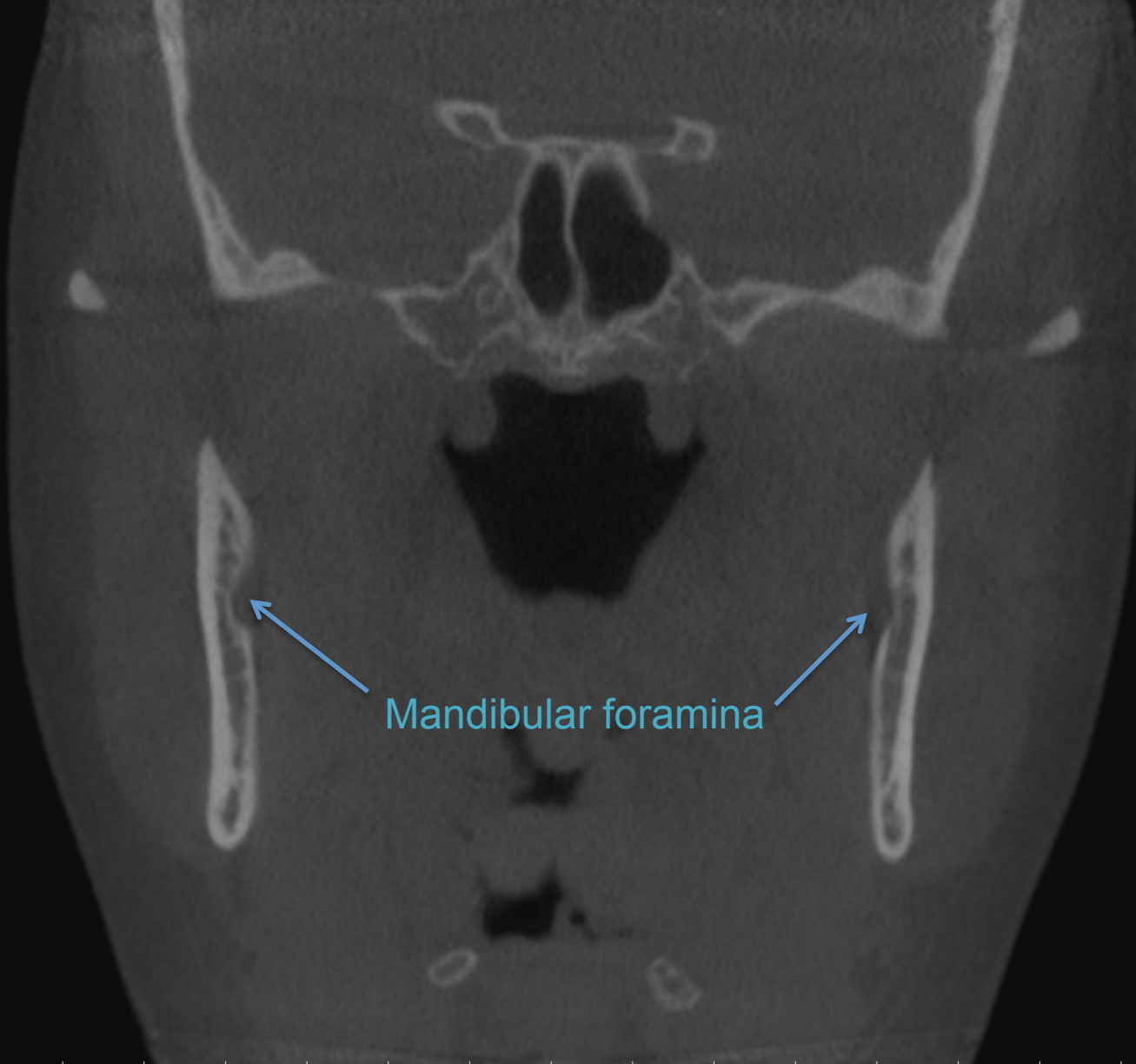




120  
(mm)

R

L



Mandibular foramina

200  
(mm)



UNIVERSITY  
OF MANITOBA

Rady Faculty of  
Health Sciences

120  
Cm

Middle cranial fossa →

R

L

200  
mm



A coronal CT scan of the skull base. The image shows the bony structures of the skull, including the orbits, nasal cavity, and the three cranial fossae. The middle cranial fossa is highlighted with a blue arrow pointing to the central part of the skull base, between the sphenoid and petrous parts of the temporal bone. The text 'Middle cranial fossa' is written in blue to the left of the arrow. The image is marked with 'R' on the left and 'L' on the right. A scale bar at the bottom right indicates 200 mm. A small '120 Cm' is visible in the top left corner.



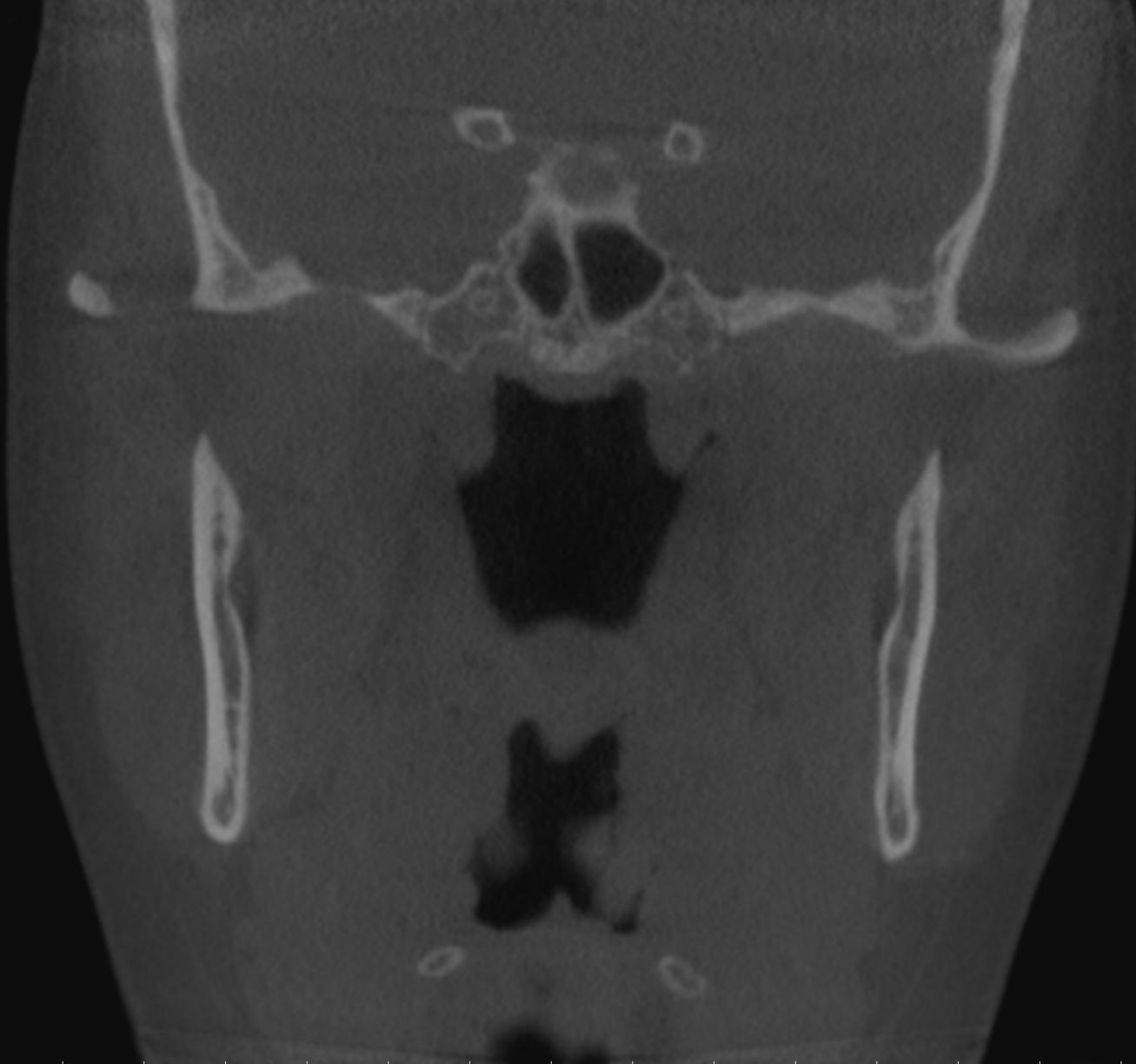
UNIVERSITY  
OF MANITOBA

Rady Faculty of  
Health Sciences

120  
(mm)

R

L



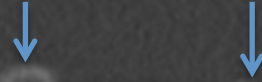
200  
(mm)



UNIVERSITY  
OF MANITOBA

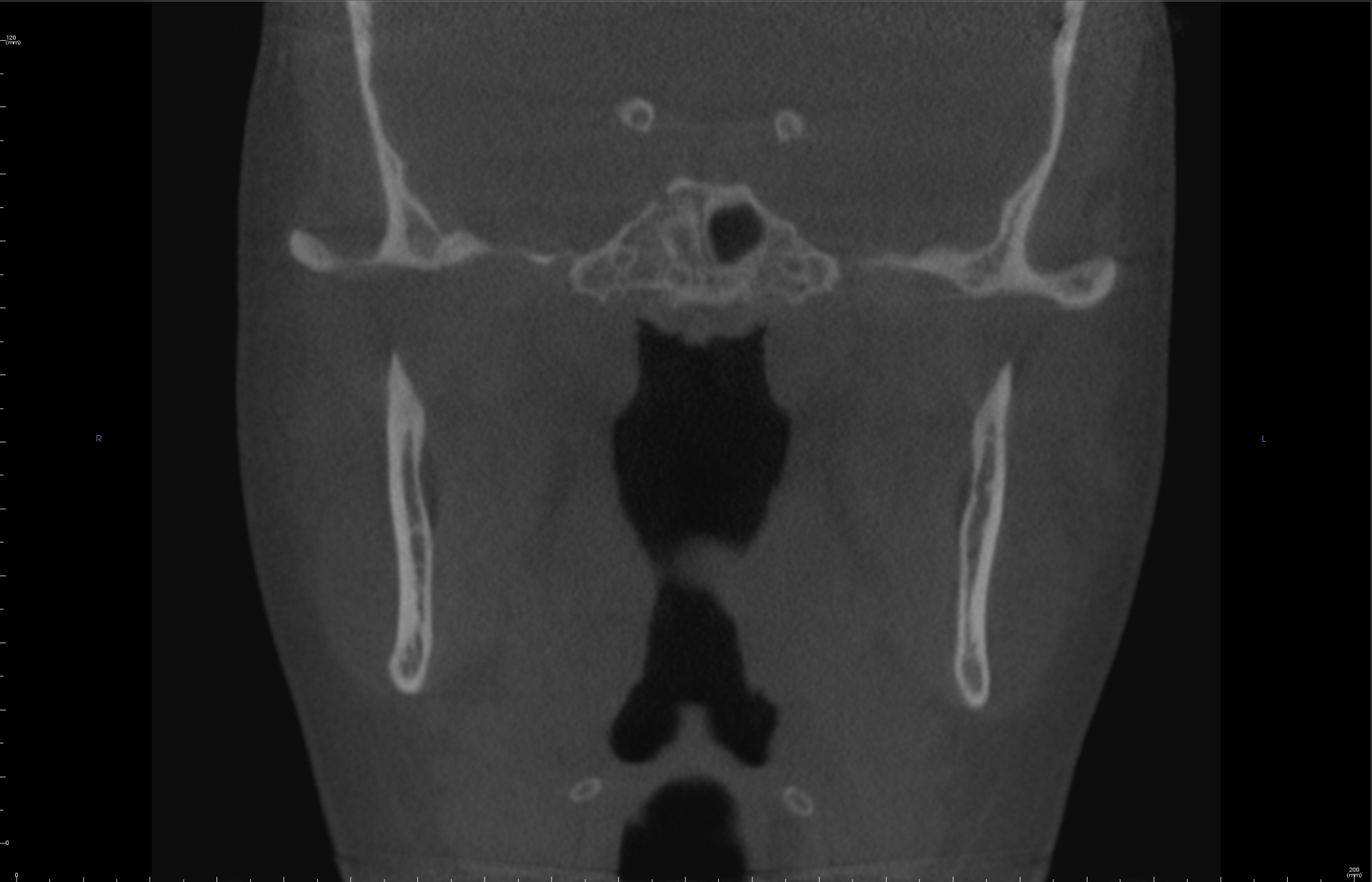
Rady Faculty of  
Health Sciences

Anterior clinoid processes



UNIVERSITY  
OF MANITOBA

Rady Faculty of  
Health Sciences



UNIVERSITY  
OF MANITOBA

Rady Faculty of  
Health Sciences

120  
(mm)

R

L



200  
(mm)

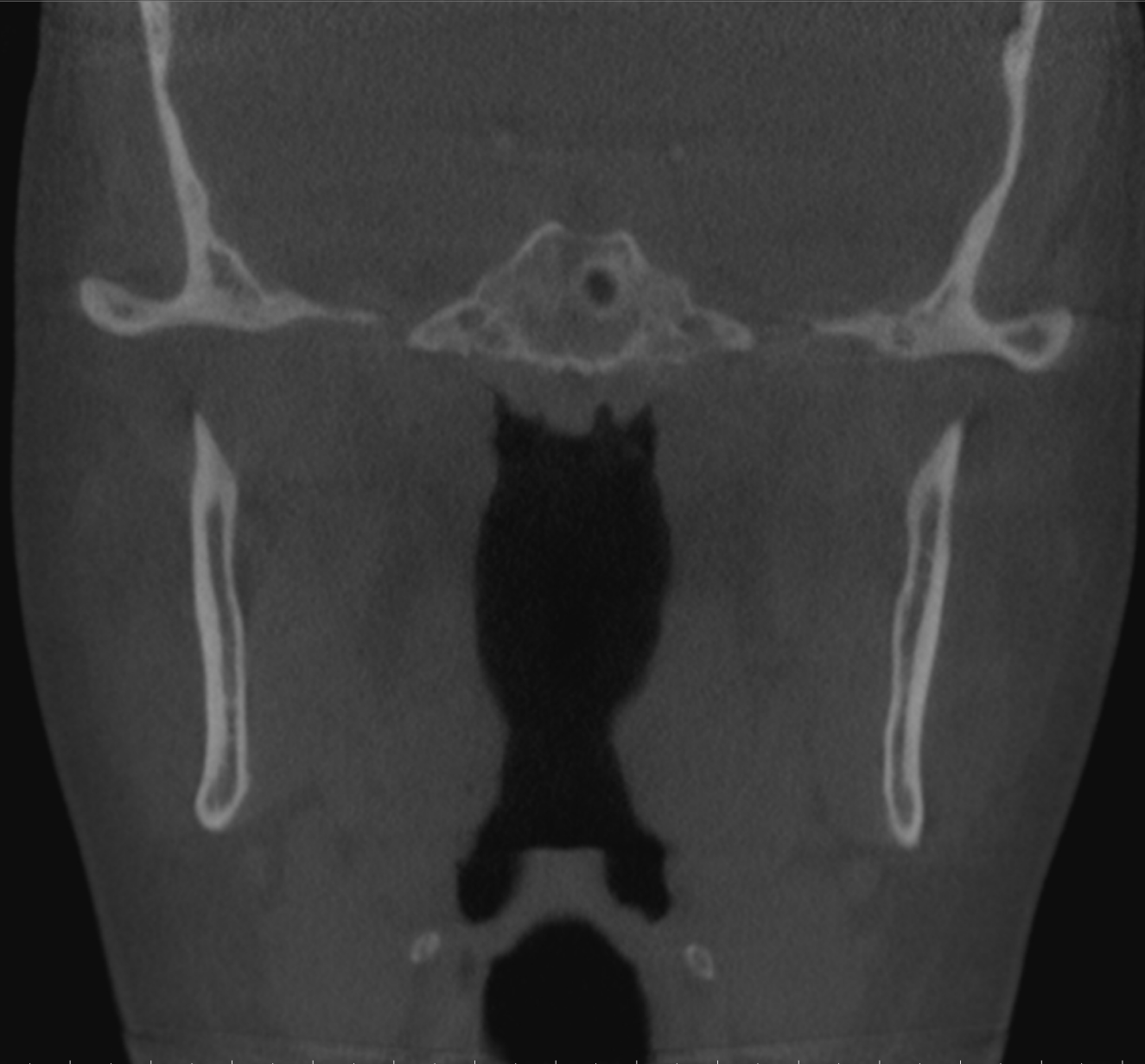


UNIVERSITY  
OF MANITOBA

Rady Faculty of  
Health Sciences

R

L



UNIVERSITY  
OF MANITOBA

Rady Faculty of  
Health Sciences

R

L

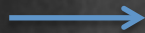


UNIVERSITY  
OF MANITOBA

Rady Faculty of  
Health Sciences



Squamous portion  
of temporal bone



Zygomatic process  
of temporal bone

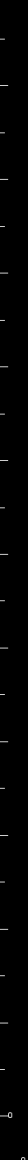


Foramen ovale



UNIVERSITY  
OF MANITOBA

Rady Faculty of  
Health Sciences



R



L



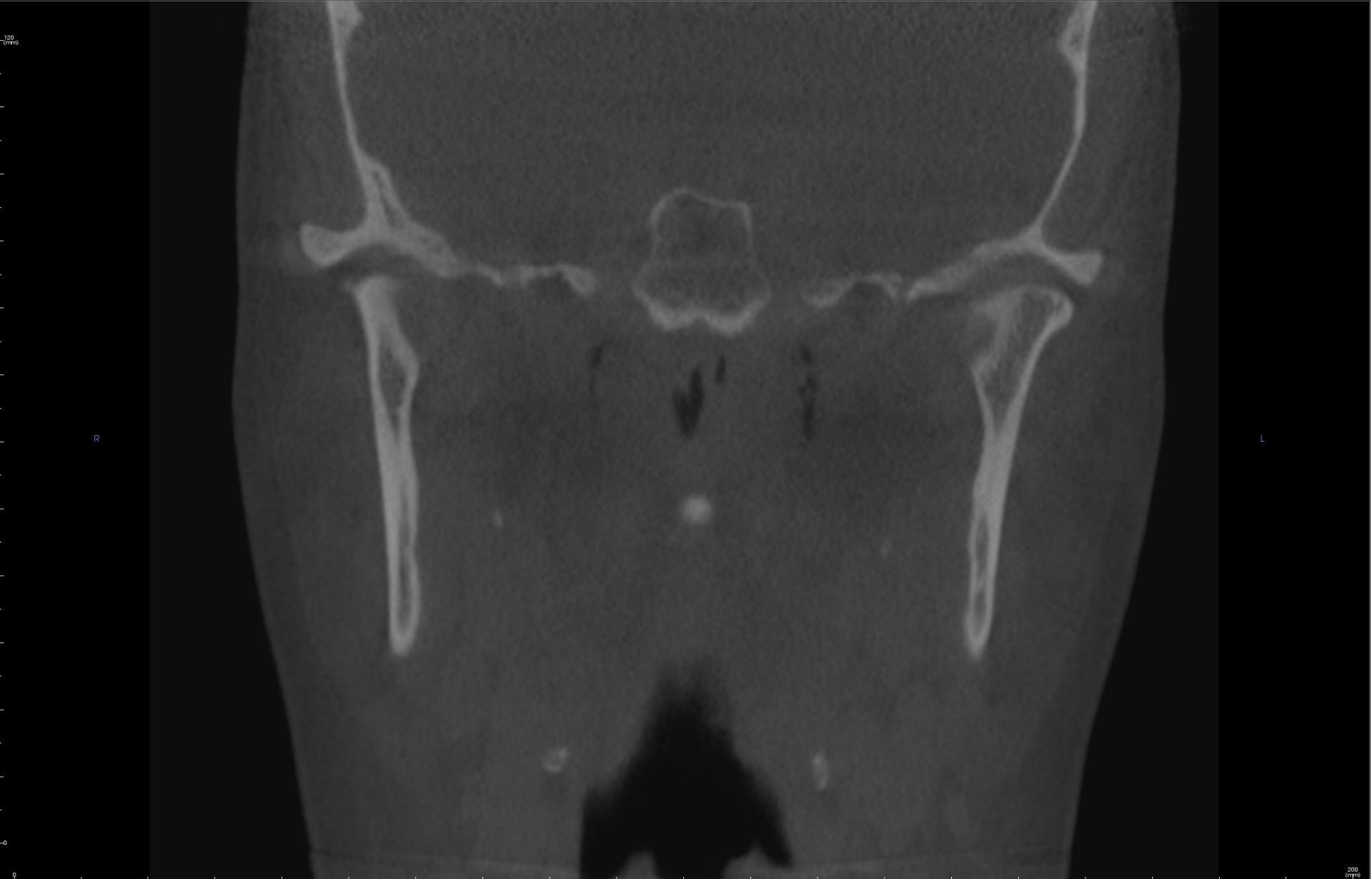
UNIVERSITY  
OF MANITOBA

Rady Faculty of  
Health Sciences



UNIVERSITY  
OF MANITOBA

Rady Faculty of  
Health Sciences



UNIVERSITY  
OF MANITOBA

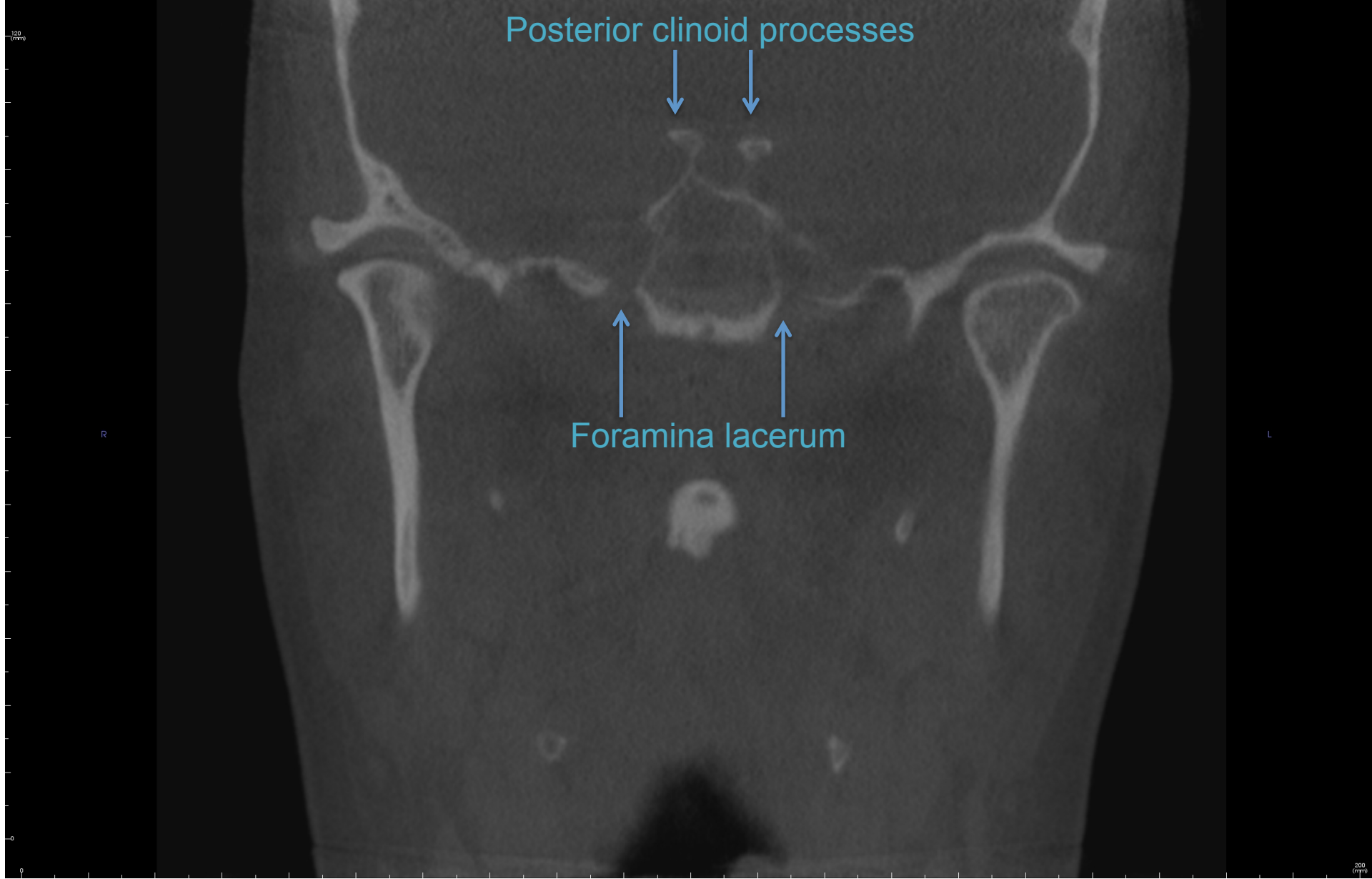
Rady Faculty of  
Health Sciences

Foramen spinosum



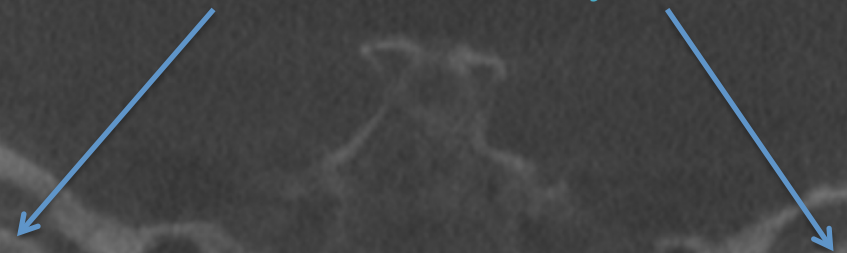
UNIVERSITY  
OF MANITOBA

Rady Faculty of  
Health Sciences



120  
(mm)

Mandibular condyles



R

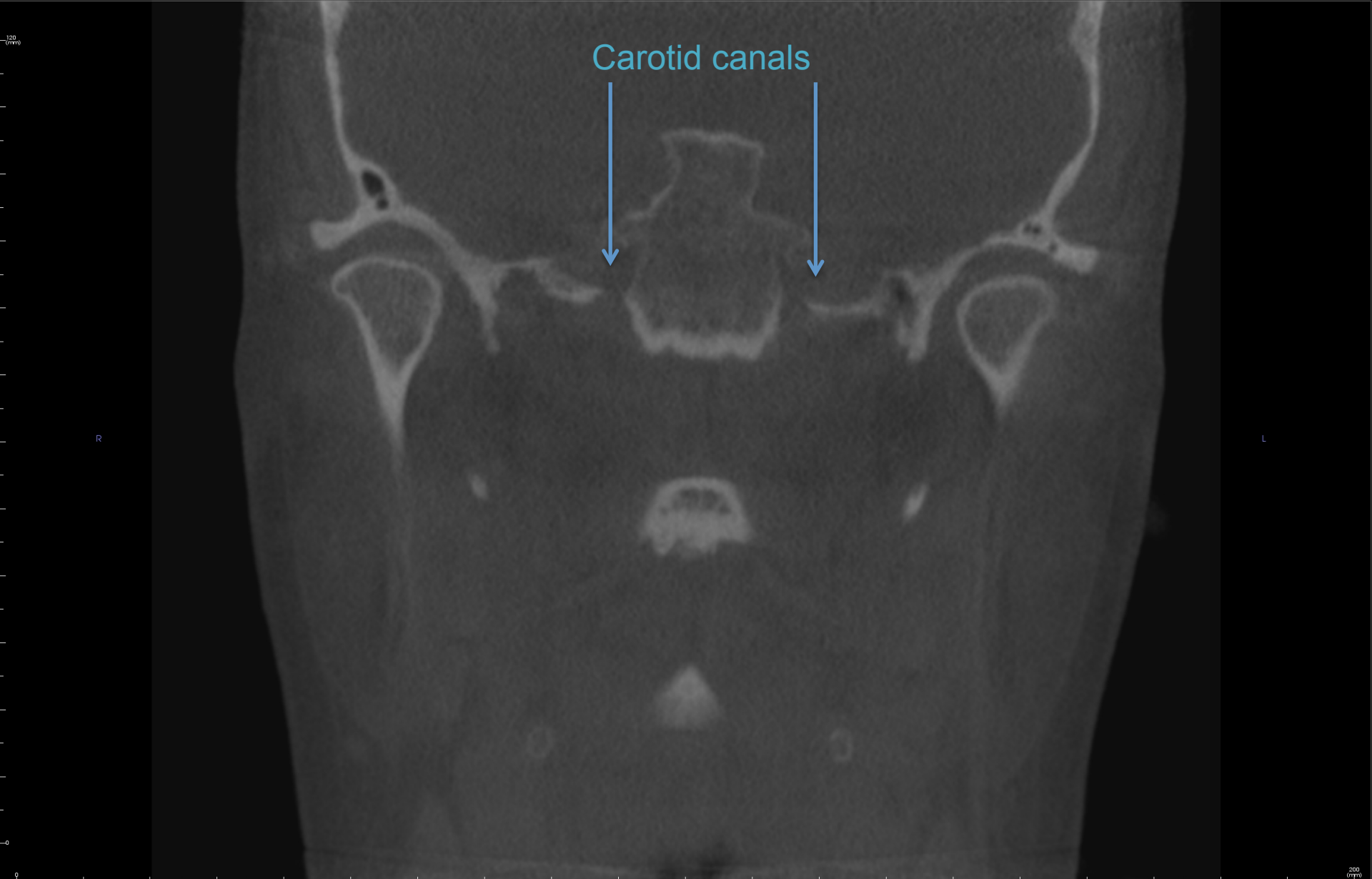
L

200  
(mm)



UNIVERSITY  
OF MANITOBA

Rady Faculty of  
Health Sciences



Carotid canals



UNIVERSITY  
OF MANITOBA

Rady Faculty of  
Health Sciences





UNIVERSITY  
OF MANITOBA

Rady Faculty of  
Health Sciences

120  
(mm)

R

L

200  
(mm)



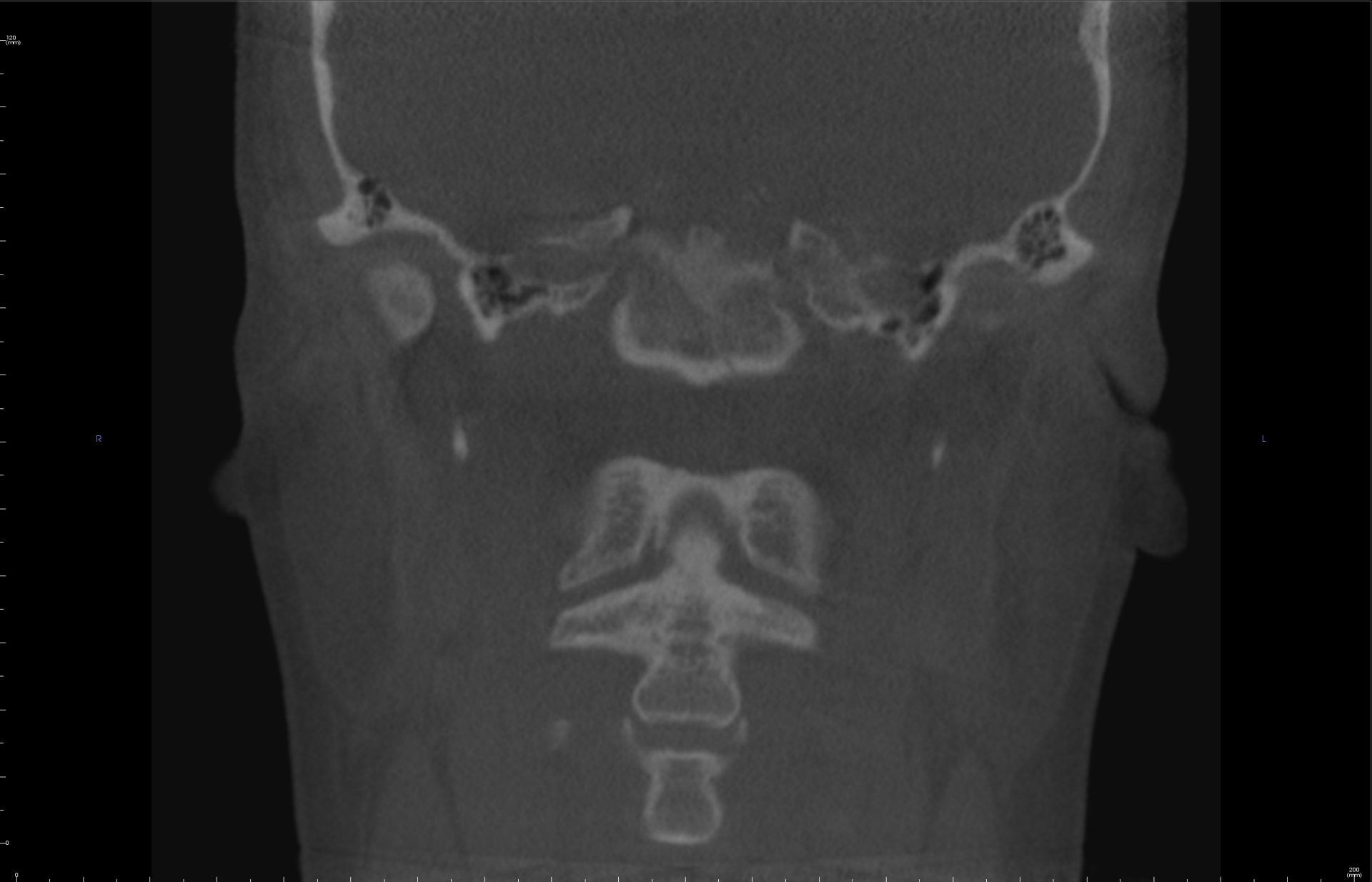
UNIVERSITY  
OF MANITOBA

Rady Faculty of  
Health Sciences



UNIVERSITY  
OF MANITOBA

Rady Faculty of  
Health Sciences



UNIVERSITY  
OF MANITOBA

Rady Faculty of  
Health Sciences

120  
(mm)

R

L



200  
(mm)



UNIVERSITY  
OF MANITOBA

Rady Faculty of  
Health Sciences

120  
(mm)

R

L



200  
(mm)



UNIVERSITY  
OF MANITOBA

Rady Faculty of  
Health Sciences



UNIVERSITY  
OF MANITOBA

Rady Faculty of  
Health Sciences

120  
(mm)

R

L



200  
(mm)



UNIVERSITY  
OF MANITOBA

Rady Faculty of  
Health Sciences





UNIVERSITY  
OF MANITOBA

Rady Faculty of  
Health Sciences

120  
(mm)

Malleus



R

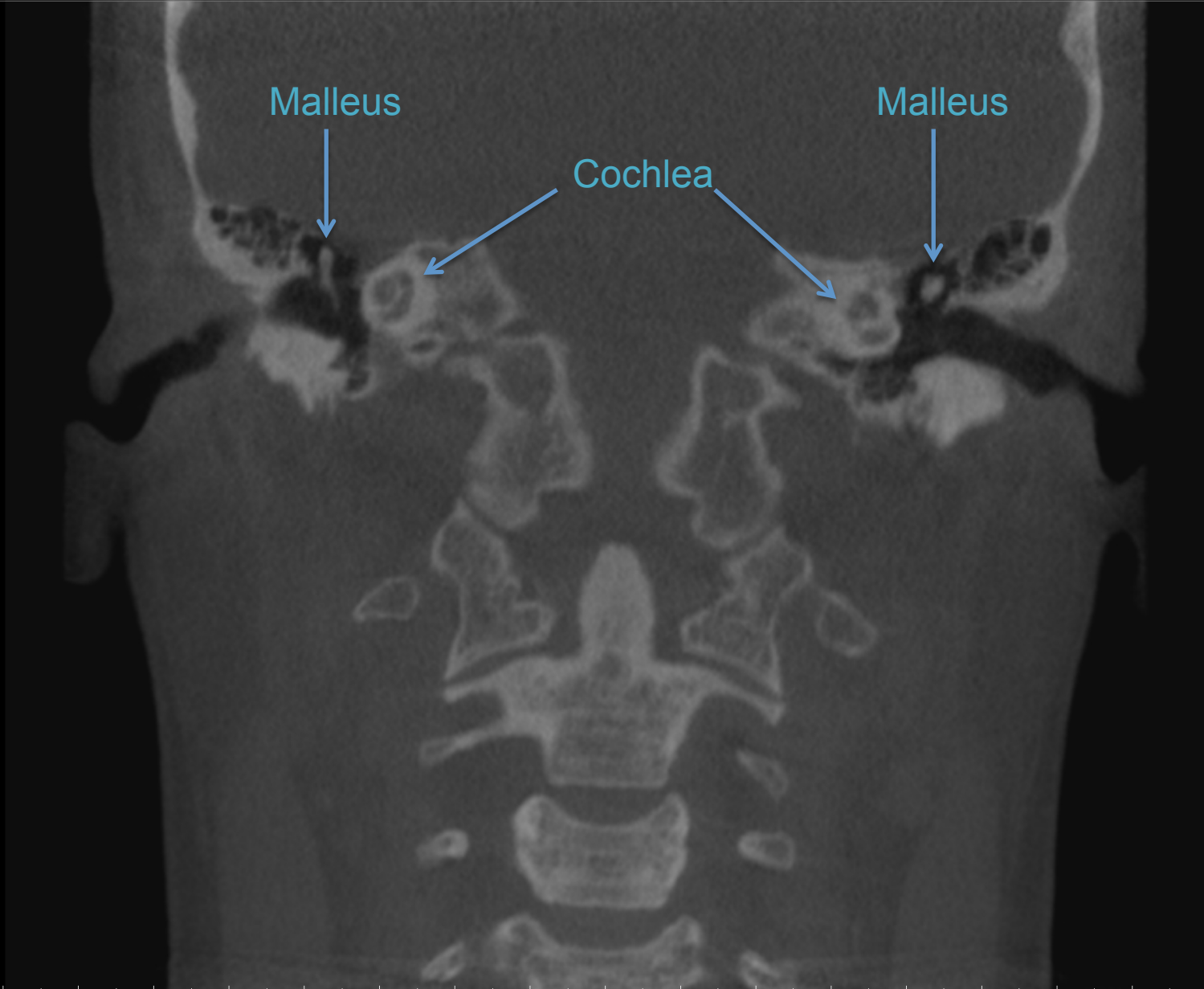
L

200  
(mm)



UNIVERSITY  
OF MANITOBA

Rady Faculty of  
Health Sciences



R

L

Malleus

Incus



120  
Cm

R

L

Incus



200  
mm



UNIVERSITY  
OF MANITOBA

Rady Faculty of  
Health Sciences

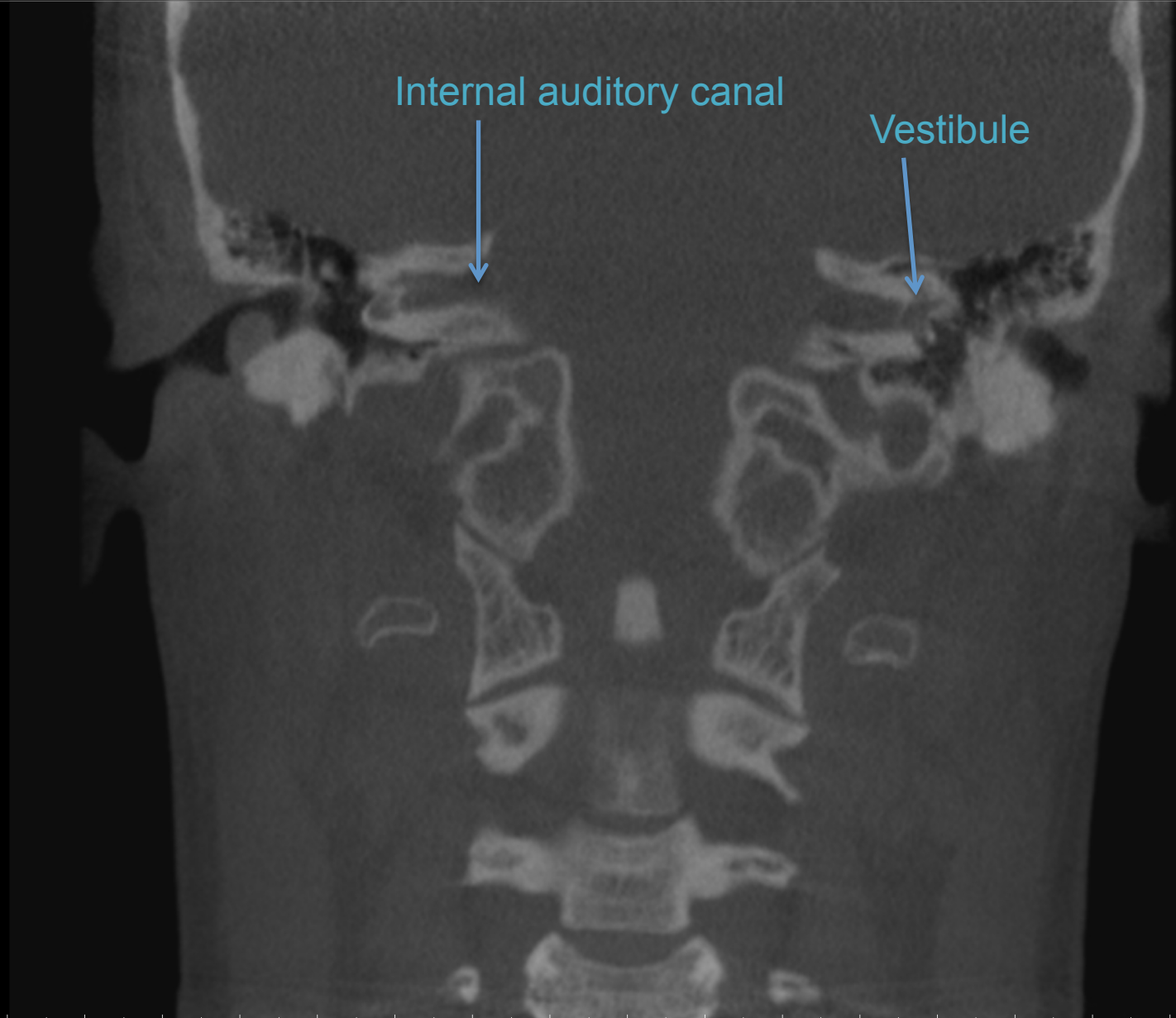
R

L

Internal auditory canal



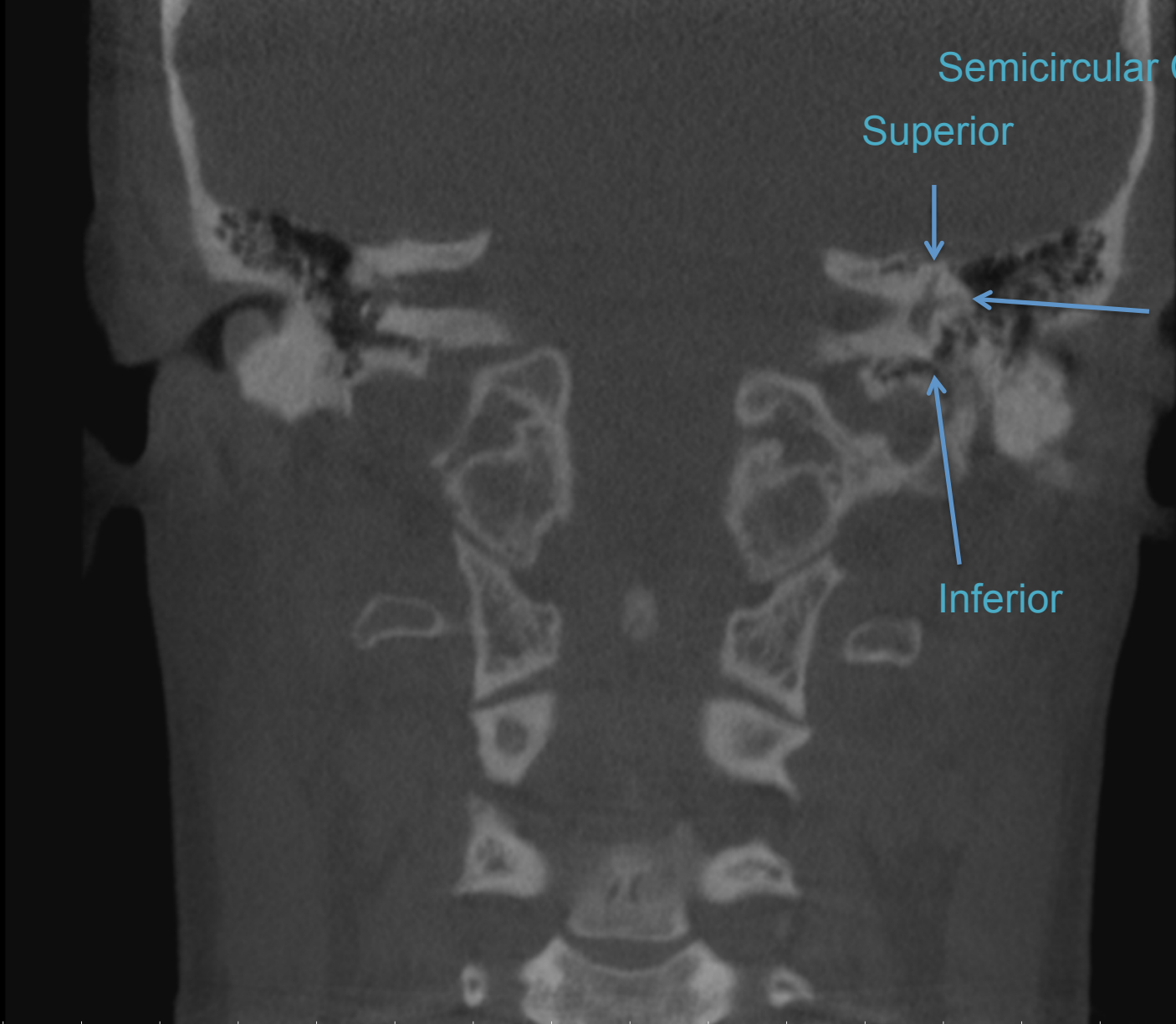
Vestibule



120  
(mm)

R

L



Semicircular Canals:

Superior

Horizontal

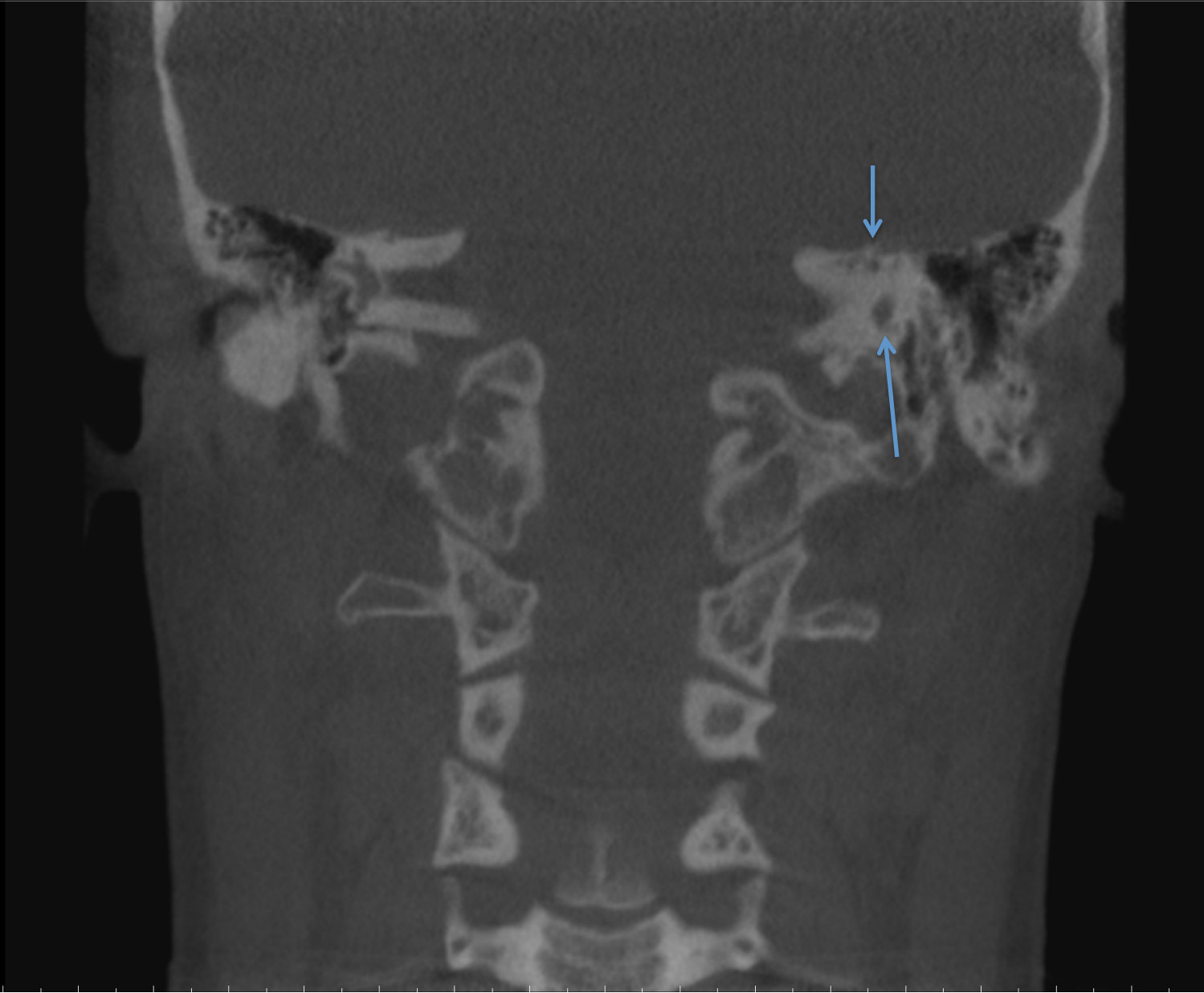
Inferior

200  
(mm)



UNIVERSITY  
OF MANITOBA

Rady Faculty of  
Health Sciences

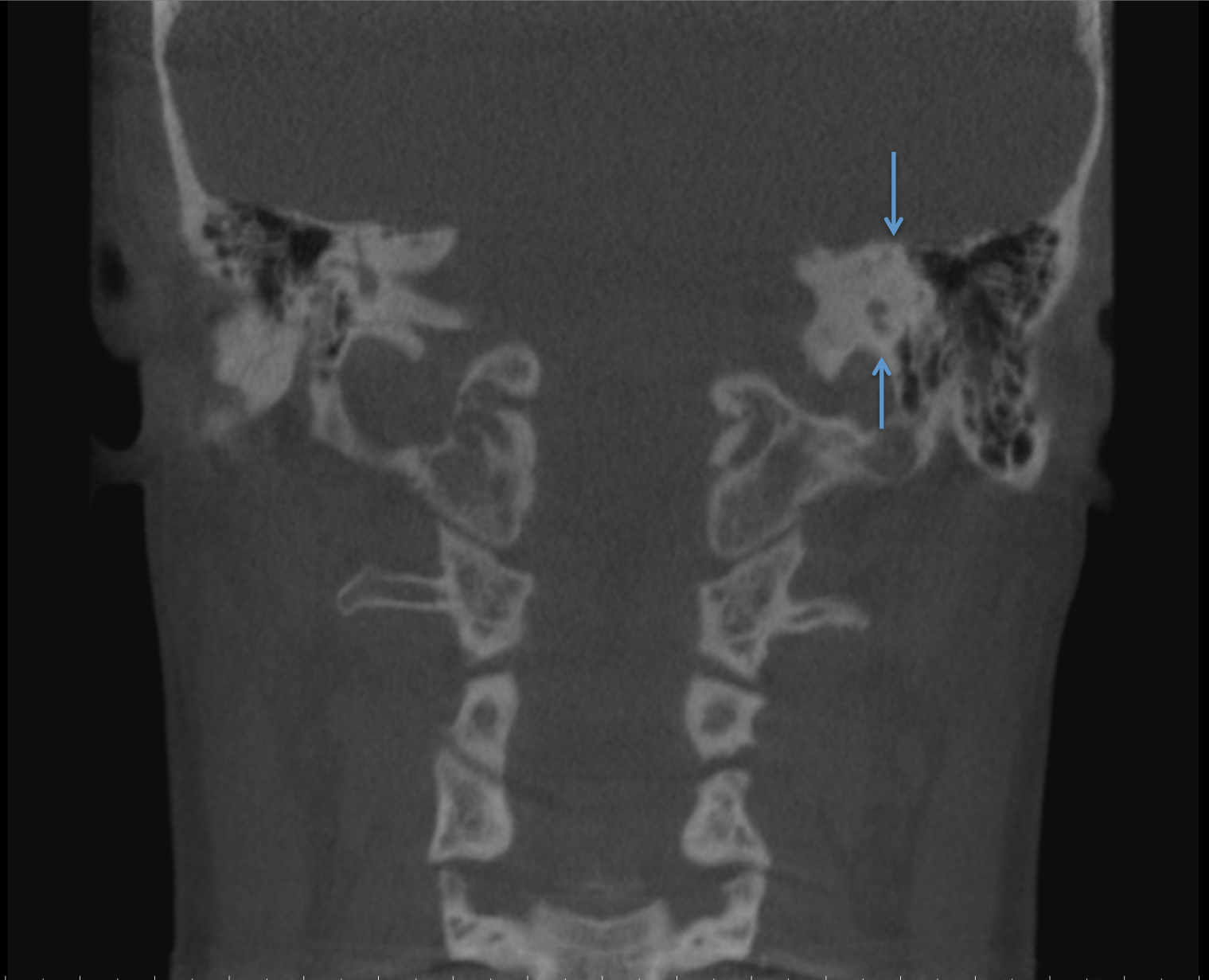




150  
(mm)

R

L



200  
(mm)

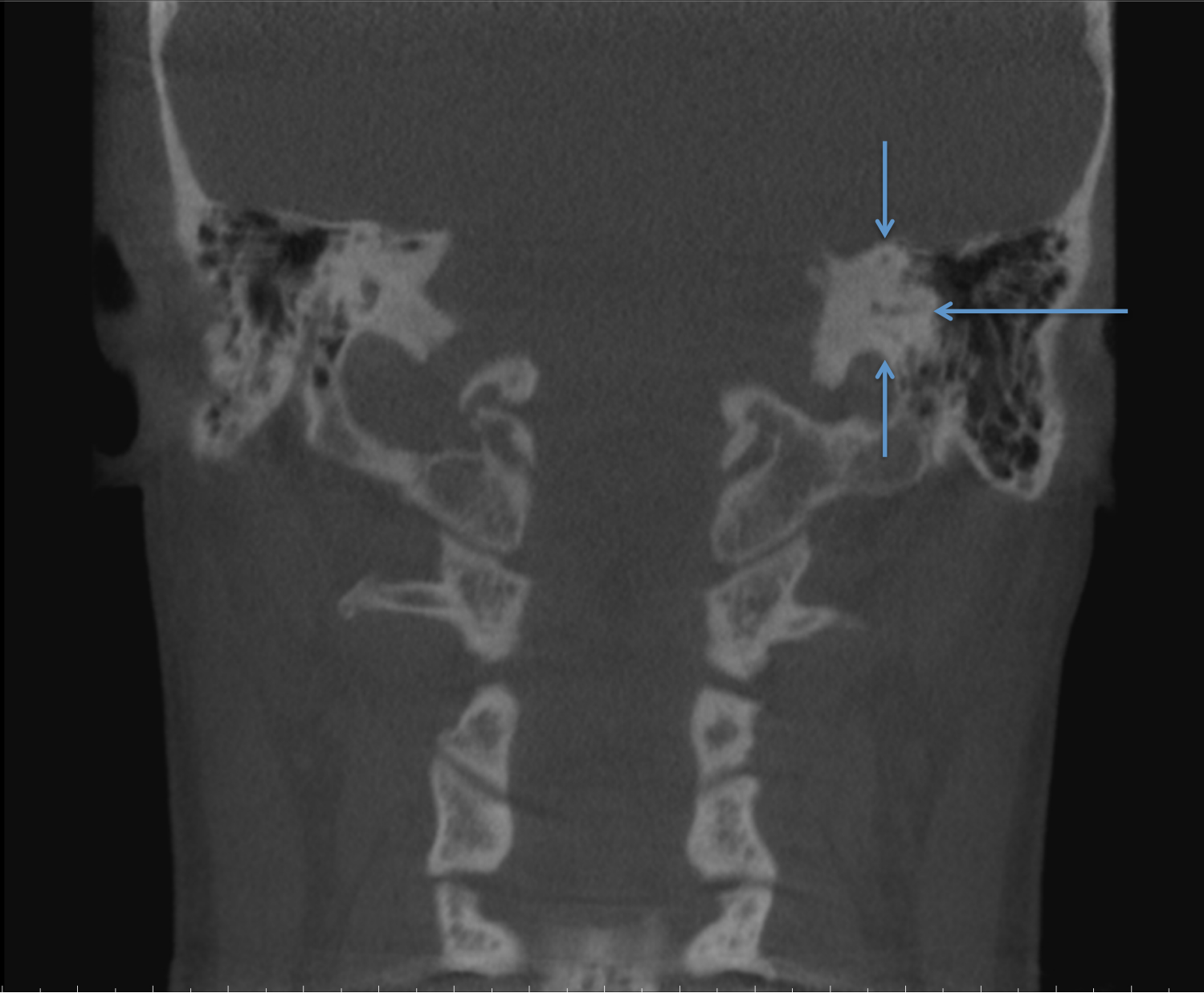


UNIVERSITY  
OF MANITOBA

Rady Faculty of  
Health Sciences

R

L

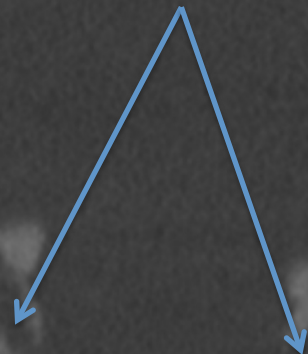


120  
(mm)

R

L

Hypoglossal canals



200  
(mm)



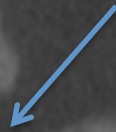
UNIVERSITY  
OF MANITOBA

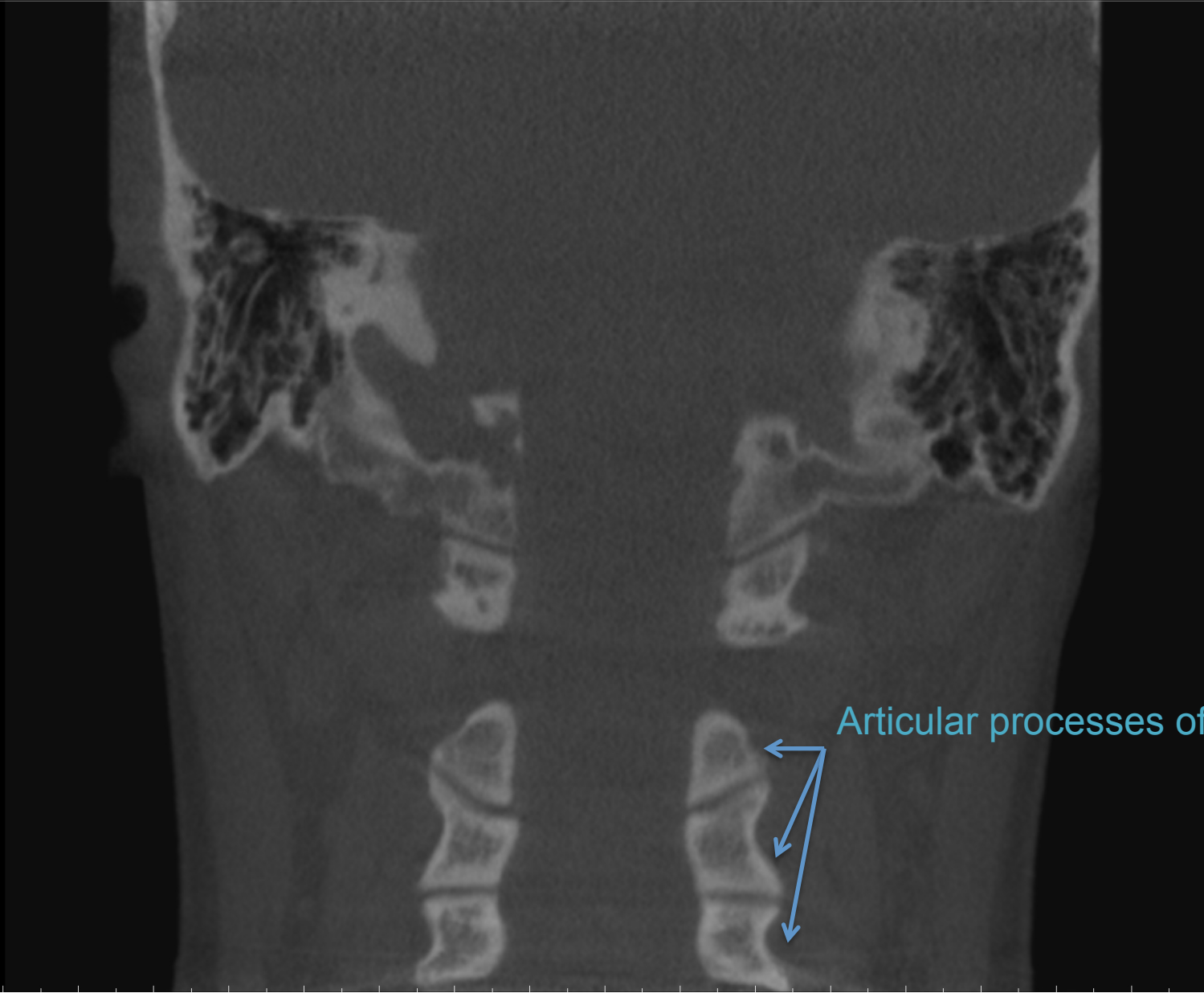
Rady Faculty of  
Health Sciences

R

L

Par vascularis  
jugular foramen





Articular processes of C-spine



UNIVERSITY  
OF MANITOBA

Rady Faculty of  
Health Sciences

R

L



UNIVERSITY  
OF MANITOBA

Rady Faculty of  
Health Sciences

R

L

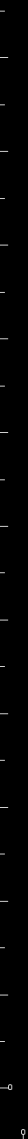


R

L







R



L

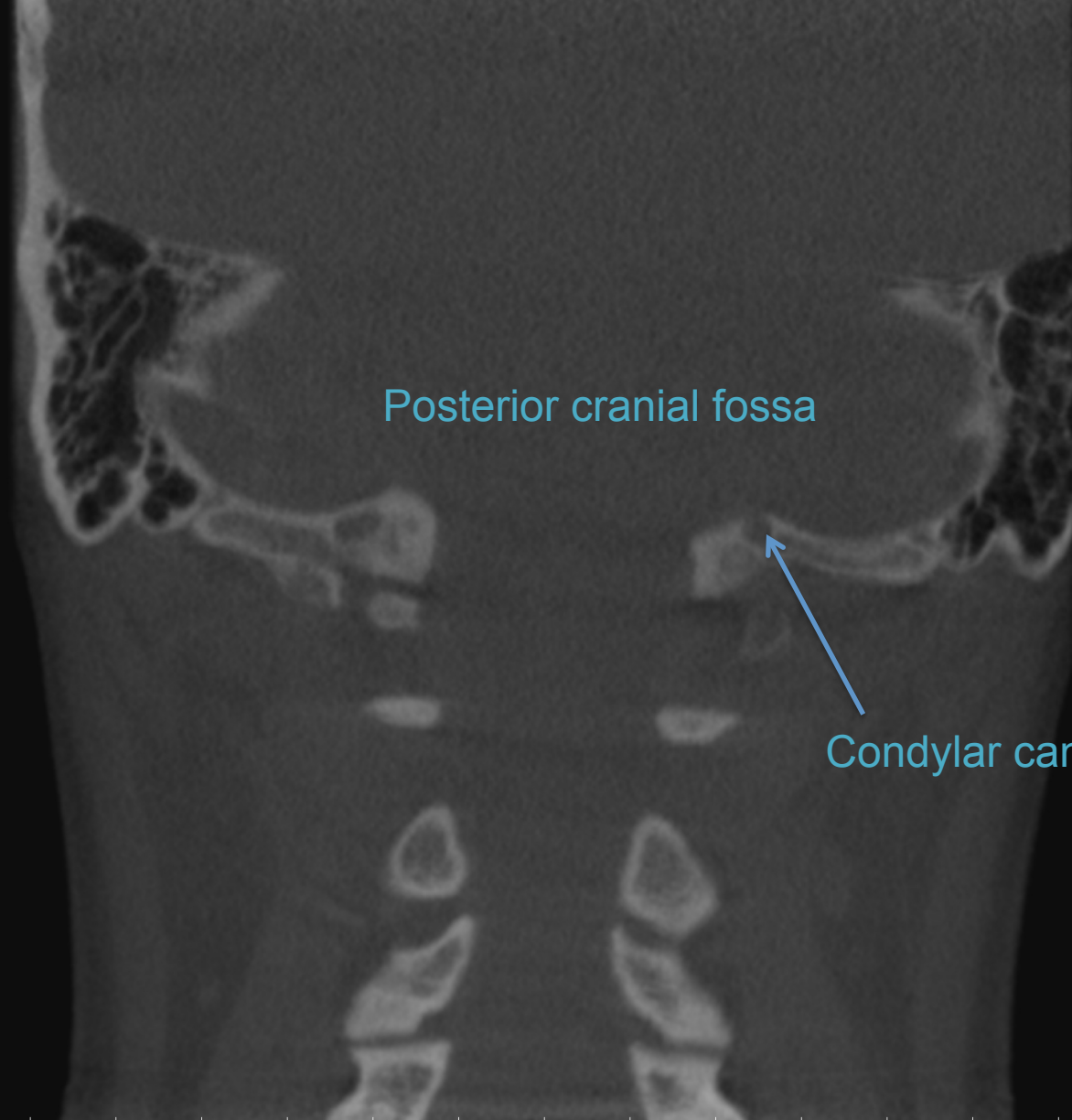


UNIVERSITY  
OF MANITOBA

Rady Faculty of  
Health Sciences

R

L



Posterior cranial fossa

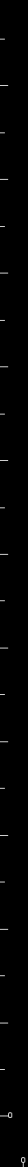
Condylar canal





Mastoid air cells





R

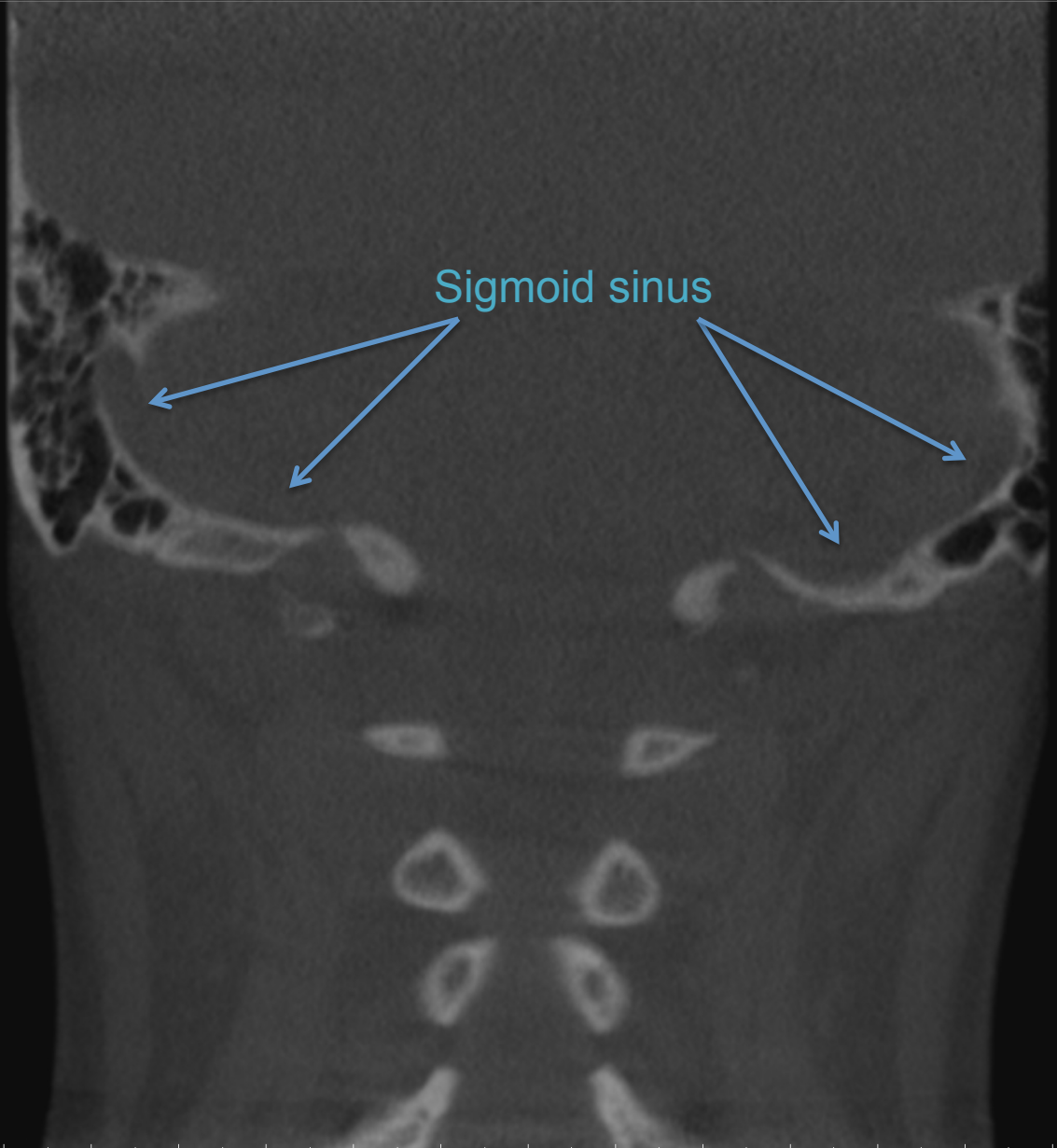


L



UNIVERSITY  
OF MANITOBA

Rady Faculty of  
Health Sciences



R

L



UNIVERSITY  
OF MANITOBA

Rady Faculty of  
Health Sciences



UNIVERSITY  
OF MANITOBA

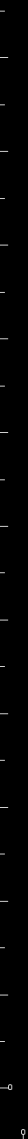
Rady Faculty of  
Health Sciences



UNIVERSITY  
OF MANITOBA

Rady Faculty of  
Health Sciences





R

L



UNIVERSITY  
OF MANITOBA

Rady Faculty of  
Health Sciences

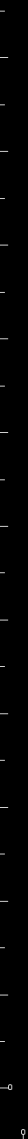
R

L



UNIVERSITY  
OF MANITOBA

Rady Faculty of  
Health Sciences

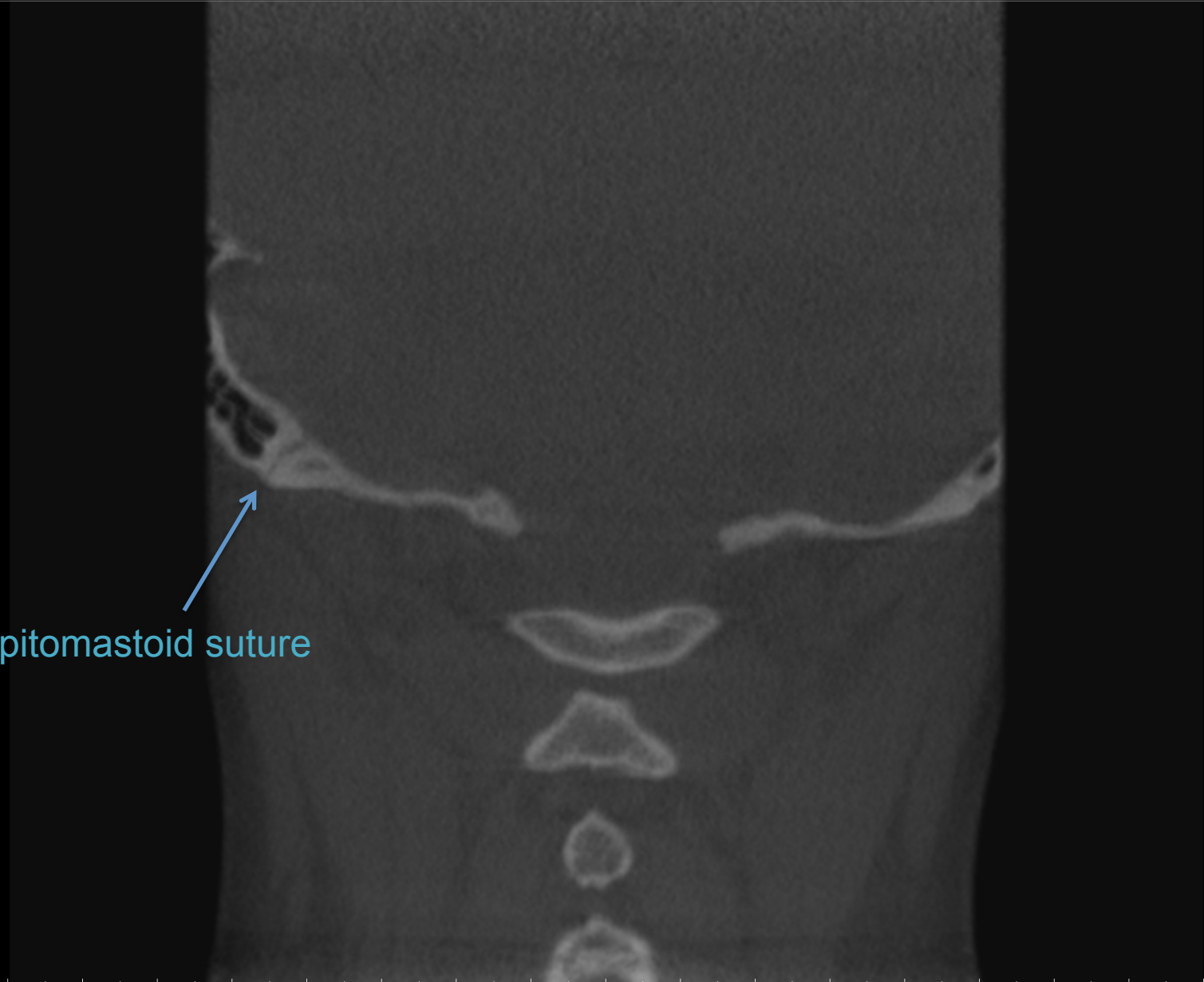


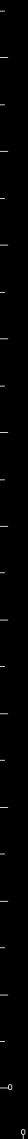
R

L



Occipitomastoid suture





R

L



← Posterior arch of C1





R

L



UNIVERSITY  
OF MANITOBA

Rady Faculty of  
Health Sciences

120  
(mm)

R

L



200  
(mm)



UNIVERSITY  
OF MANITOBA

Rady Faculty of  
Health Sciences

R

L

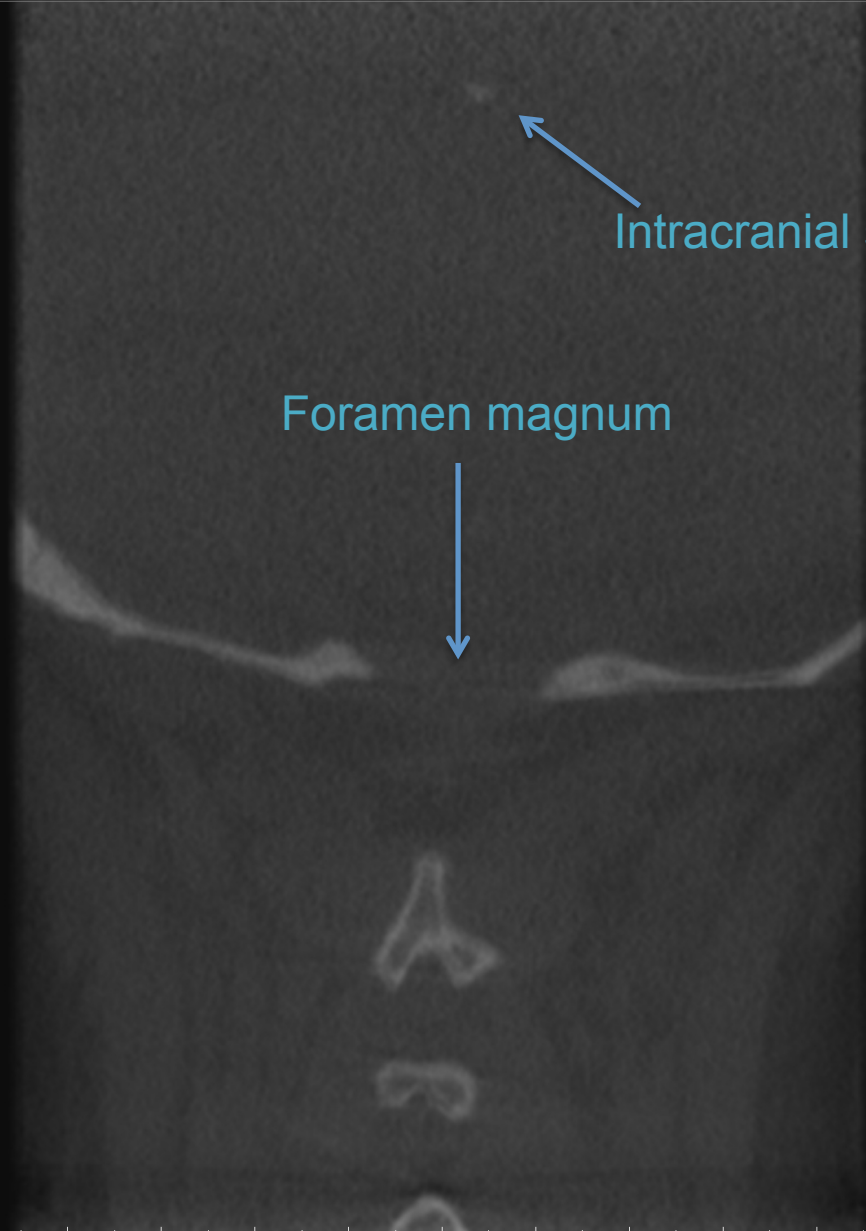
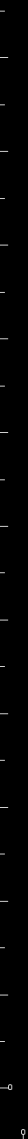


R

L







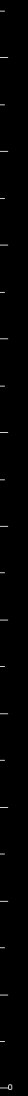
Intracranial soft tissue calcification

Foramen magnum

R

L





R

L



Spinous processes of:

← C2

← C3



R

L



UNIVERSITY  
OF MANITOBA

Rady Faculty of  
Health Sciences

R

L



UNIVERSITY  
OF MANITOBA

Rady Faculty of  
Health Sciences

R

L



R

L



UNIVERSITY  
OF MANITOBA

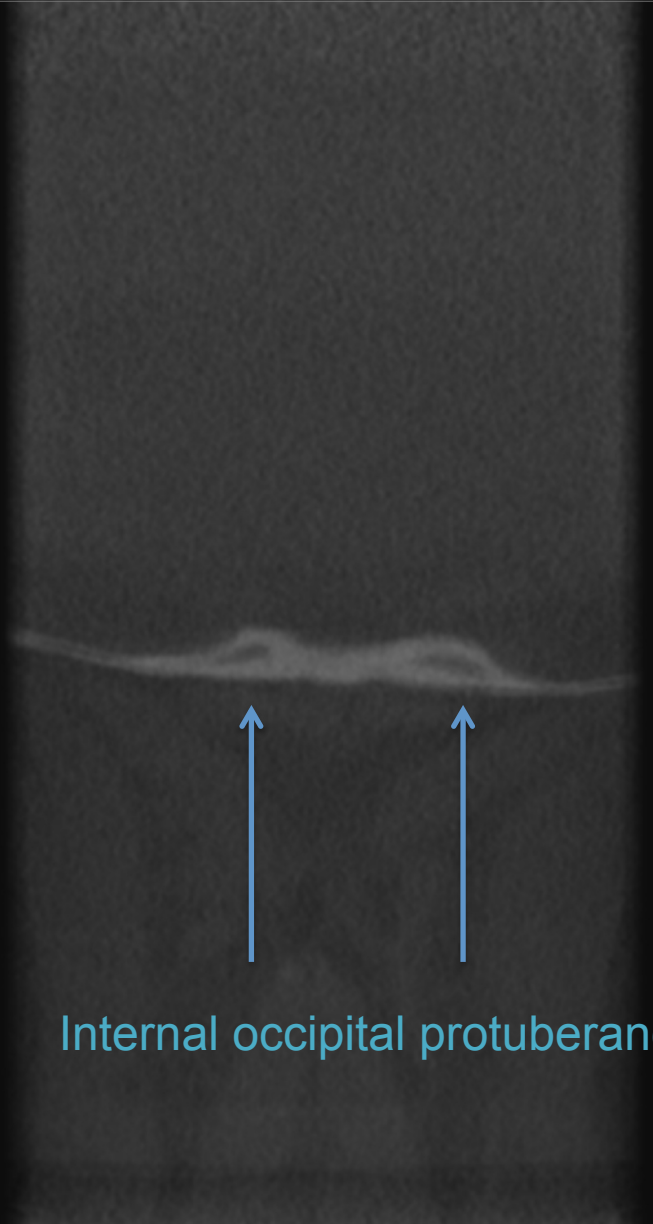
Rady Faculty of  
Health Sciences

Groove for superior sagittal sinus



R

L



Internal occipital protuberance





R

L



UNIVERSITY  
OF MANITOBA

Rady Faculty of  
Health Sciences

120  
(mm)

R

L

200  
(mm)



UNIVERSITY  
OF MANITOBA

Rady Faculty of  
Health Sciences

R

L



UNIVERSITY  
OF MANITOBA

Rady Faculty of  
Health Sciences

R

L



UNIVERSITY  
OF MANITOBA

Rady Faculty of  
Health Sciences

R

L



Occipital bone



R

L



UNIVERSITY  
OF MANITOBA

Rady Faculty of  
Health Sciences