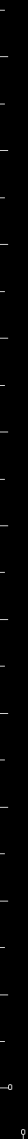
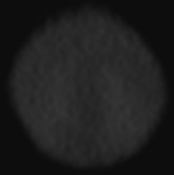


Coronal Slices





R



Tip of Nose

L



R

L



UNIVERSITY
OF MANITOBA

Rady Faculty of
Health Sciences

R

L



UNIVERSITY
OF MANITOBA

Rady Faculty of
Health Sciences

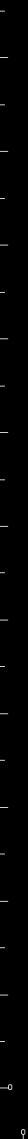
R

L

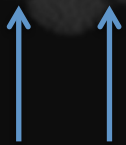


UNIVERSITY
OF MANITOBA

Rady Faculty of
Health Sciences



R



Nares

L



R

L



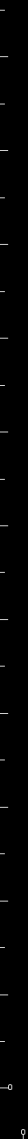
R

L



UNIVERSITY
OF MANITOBA

Rady Faculty of
Health Sciences



R



L



UNIVERSITY
OF MANITOBA

Rady Faculty of
Health Sciences

R

L



UNIVERSITY
OF MANITOBA

Rady Faculty of
Health Sciences

R

L

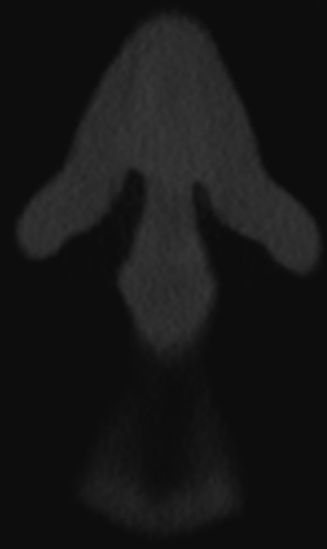


UNIVERSITY
OF MANITOBA

Rady Faculty of
Health Sciences

R

L

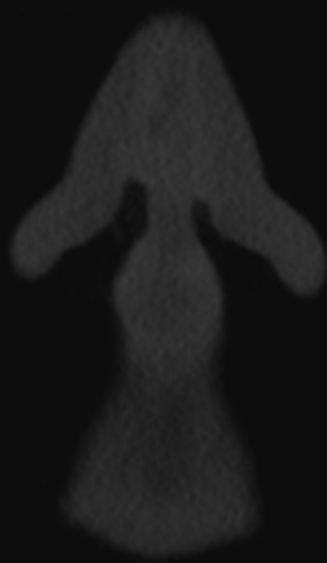


UNIVERSITY
OF MANITOBA

Rady Faculty of
Health Sciences

R

L

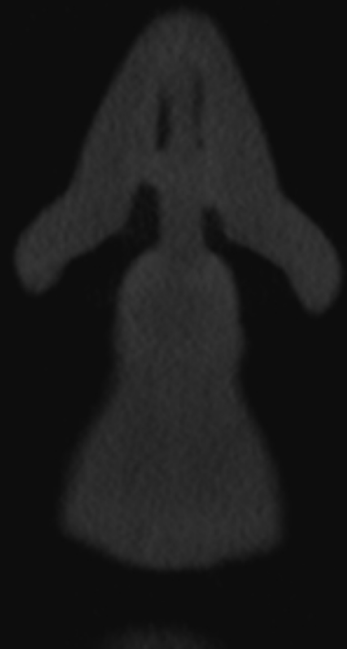


UNIVERSITY
OF MANITOBA

Rady Faculty of
Health Sciences

R

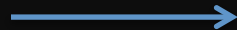
L



UNIVERSITY
OF MANITOBA

Rady Faculty of
Health Sciences

Ala of nose



Philtrum of lip

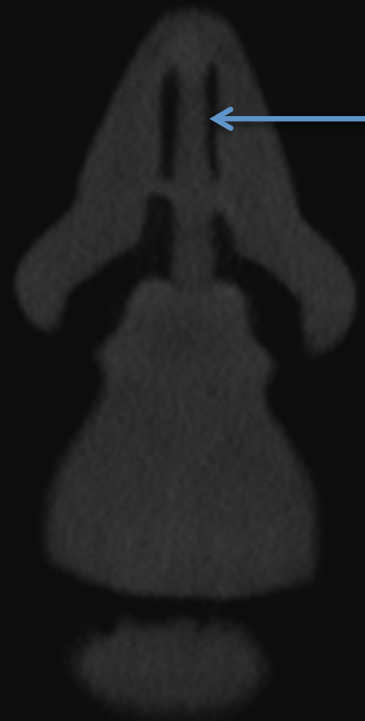


UNIVERSITY
OF MANITOBA

Rady Faculty of
Health Sciences

R

L

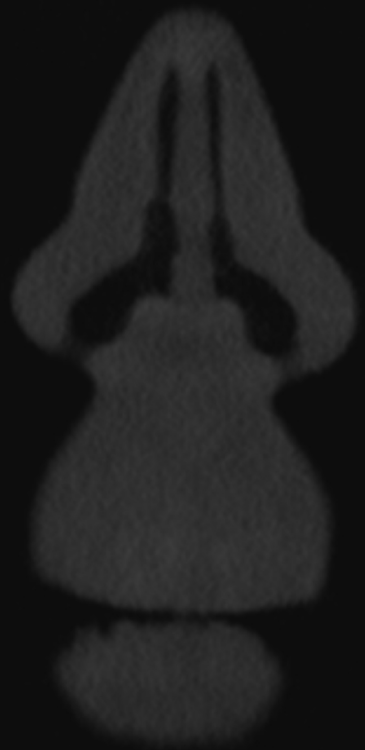


← Cartilaginous nasal septum



R

L

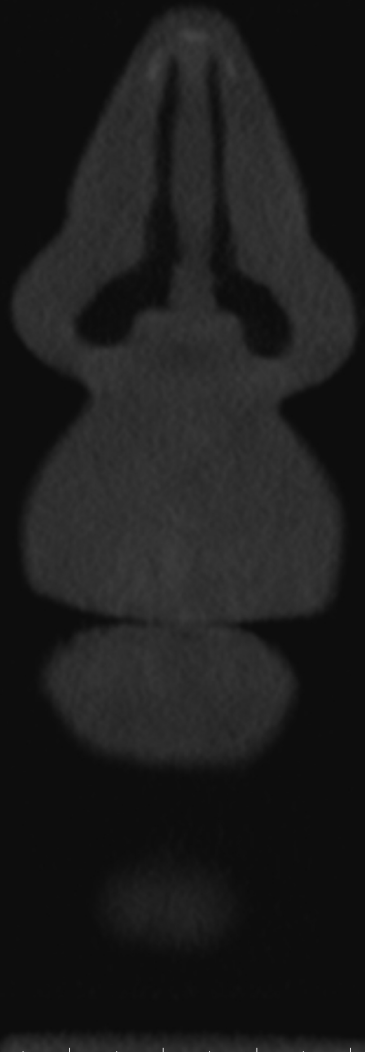


UNIVERSITY
OF MANITOBA

Rady Faculty of
Health Sciences

R

L



UNIVERSITY
OF MANITOBA

Rady Faculty of
Health Sciences

R

L



UNIVERSITY
OF MANITOBA

Rady Faculty of
Health Sciences

R

L



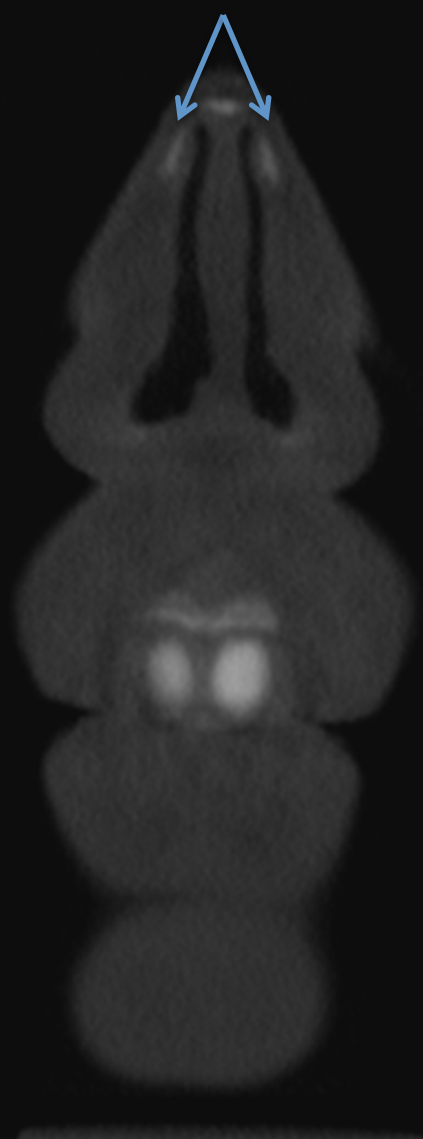
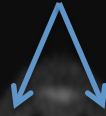
Upper lip

Lower lip

Chin

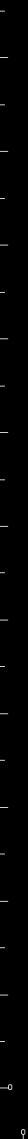


Nasal bones



UNIVERSITY
OF MANITOBA

Rady Faculty of
Health Sciences



R

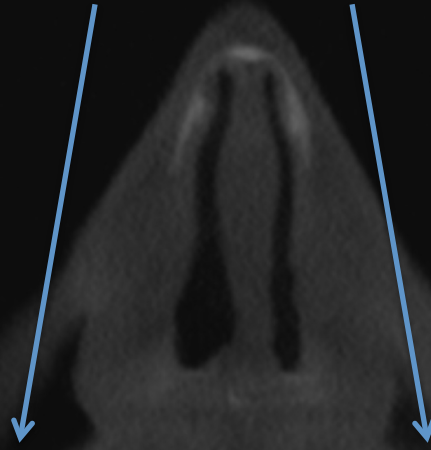
L



← Central incisors



Nasolabial folds



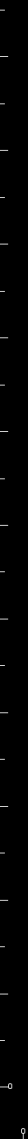
R

L



Central incisor pulp chambers and canals





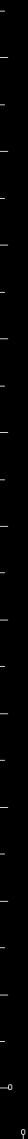
R

L



UNIVERSITY
OF MANITOBA

Rady Faculty of
Health Sciences



R



L

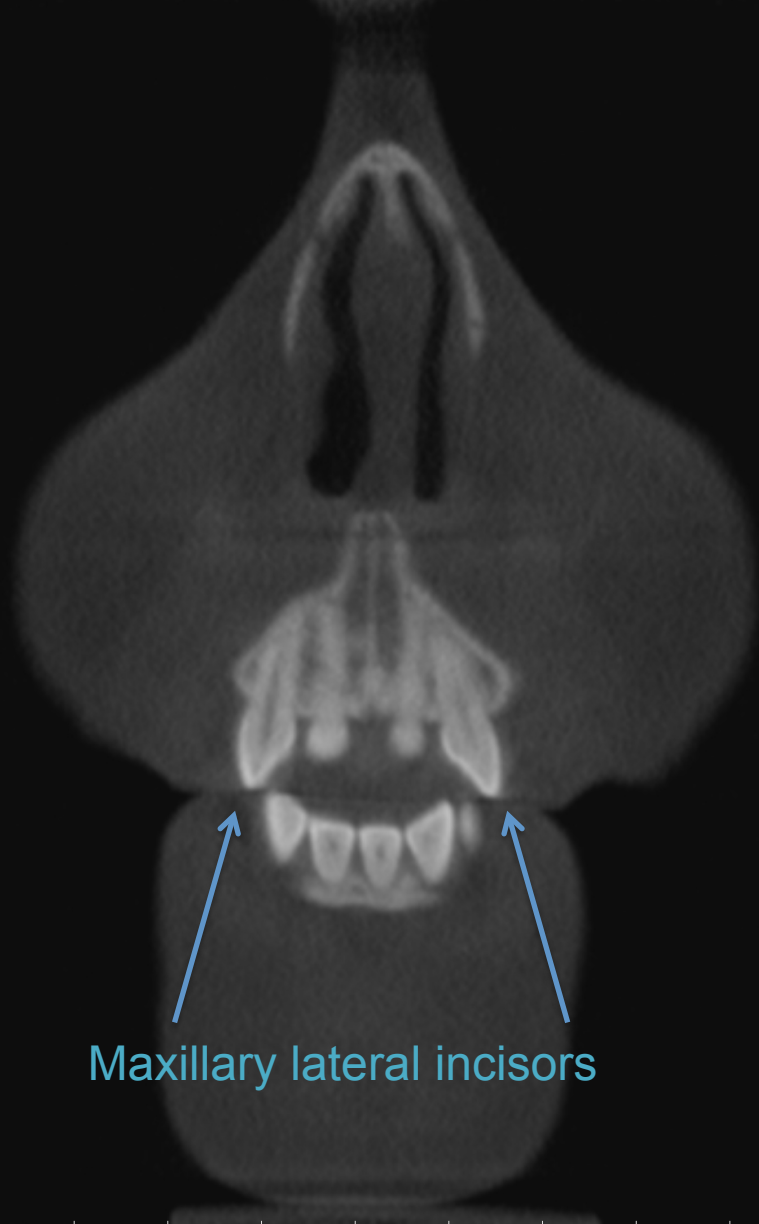


UNIVERSITY
OF MANITOBA

Rady Faculty of
Health Sciences

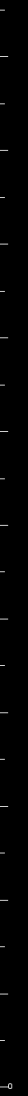
R

L



Maxillary lateral incisors





R

L

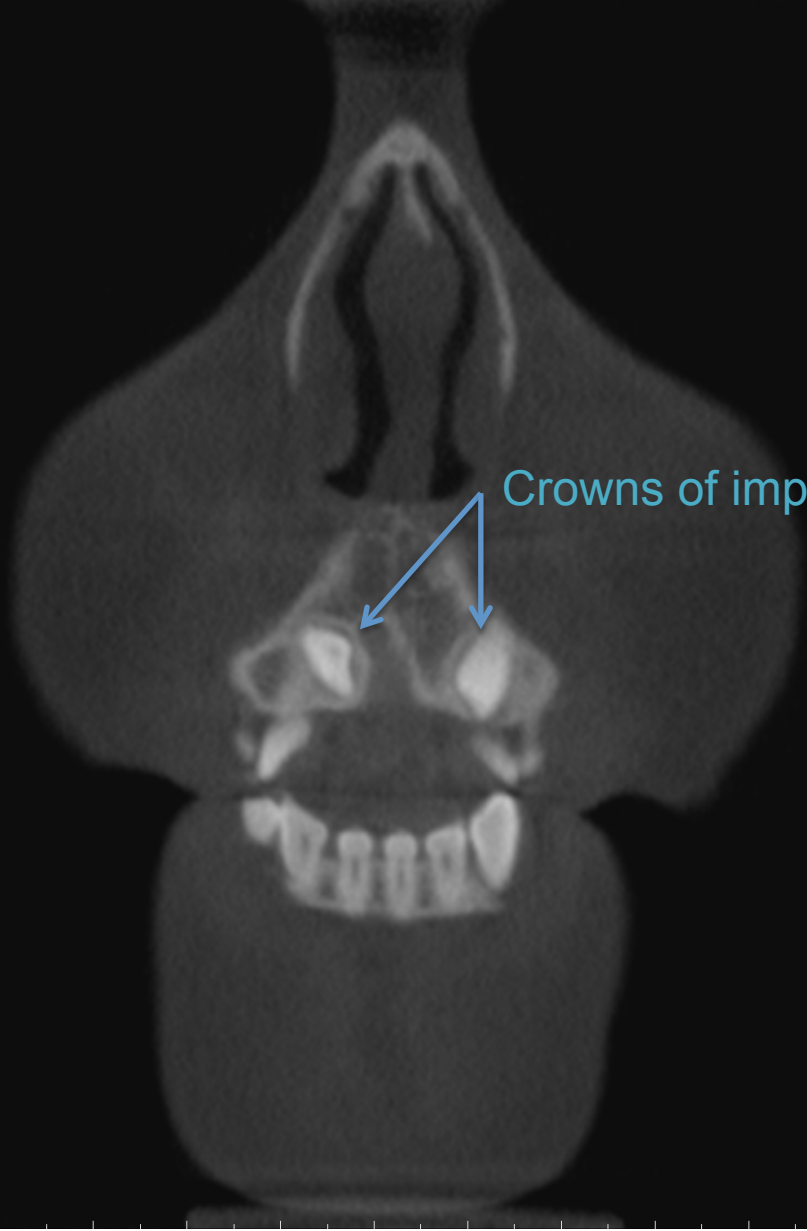


UNIVERSITY
OF MANITOBA

Rady Faculty of
Health Sciences

R

L

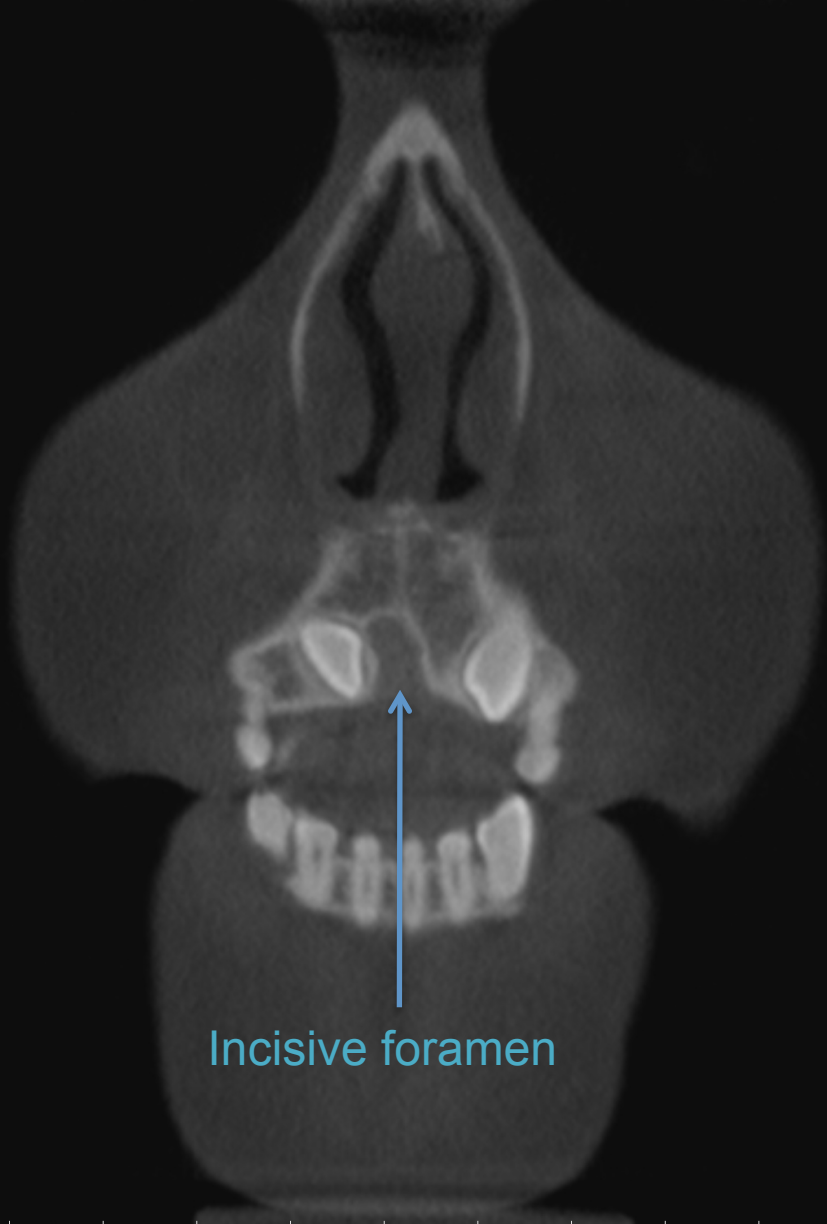


Crowns of impacted maxillary canines



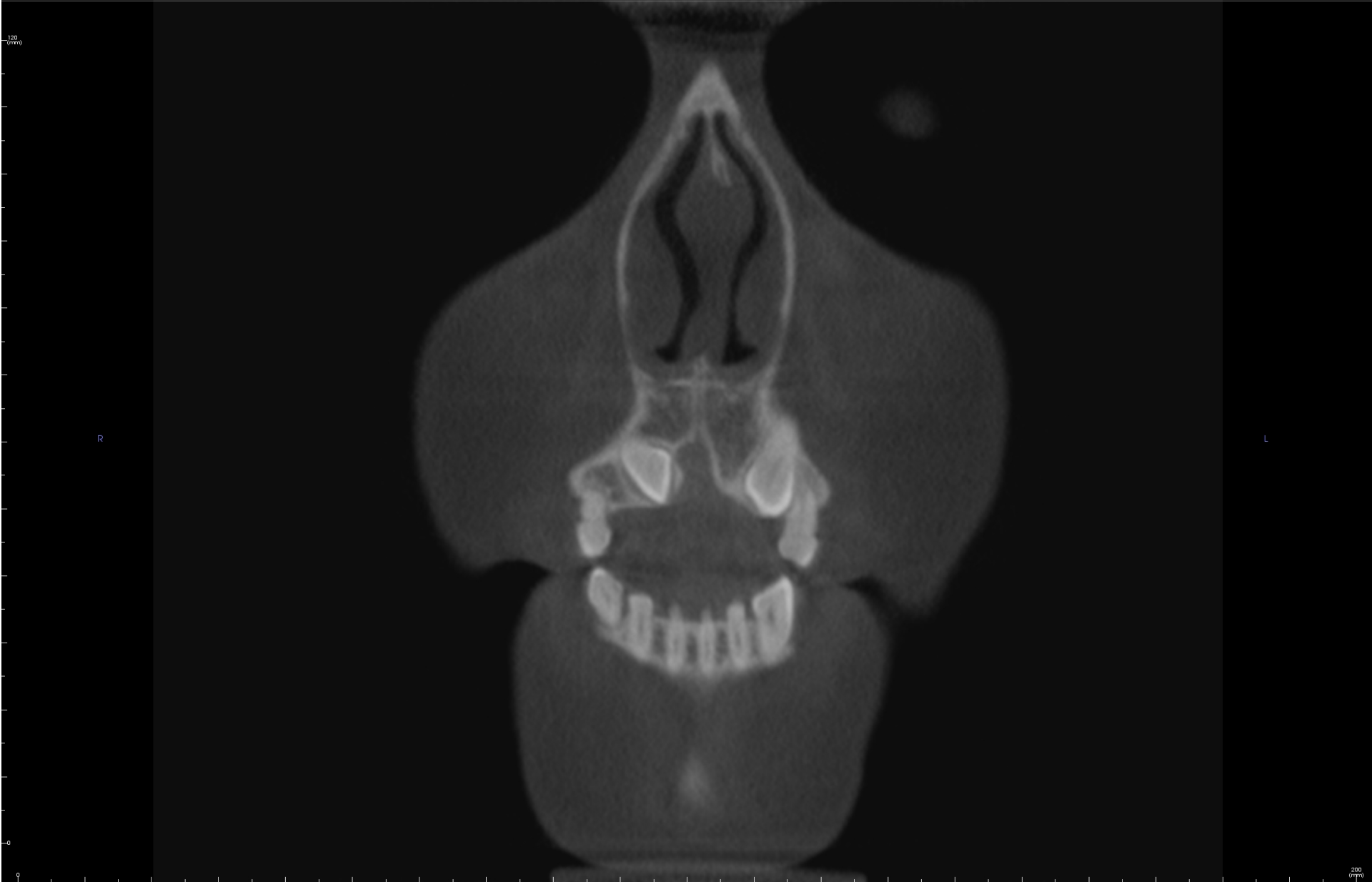
R

L



Incisive foramen





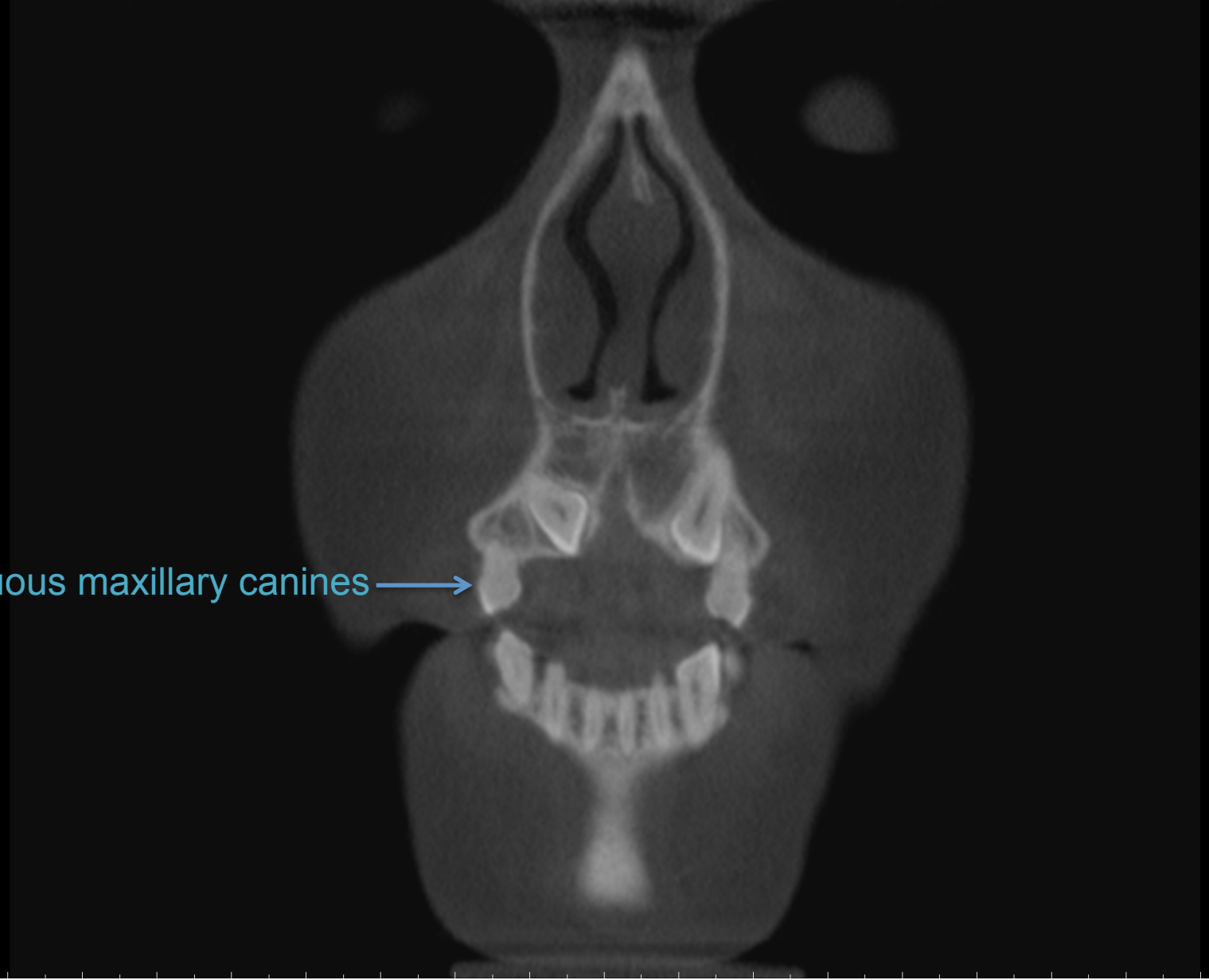
UNIVERSITY
OF MANITOBA

Rady Faculty of
Health Sciences

R

L

Deciduous maxillary canines →



R

L



UNIVERSITY
OF MANITOBA

Rady Faculty of
Health Sciences

Frontonasal suture →



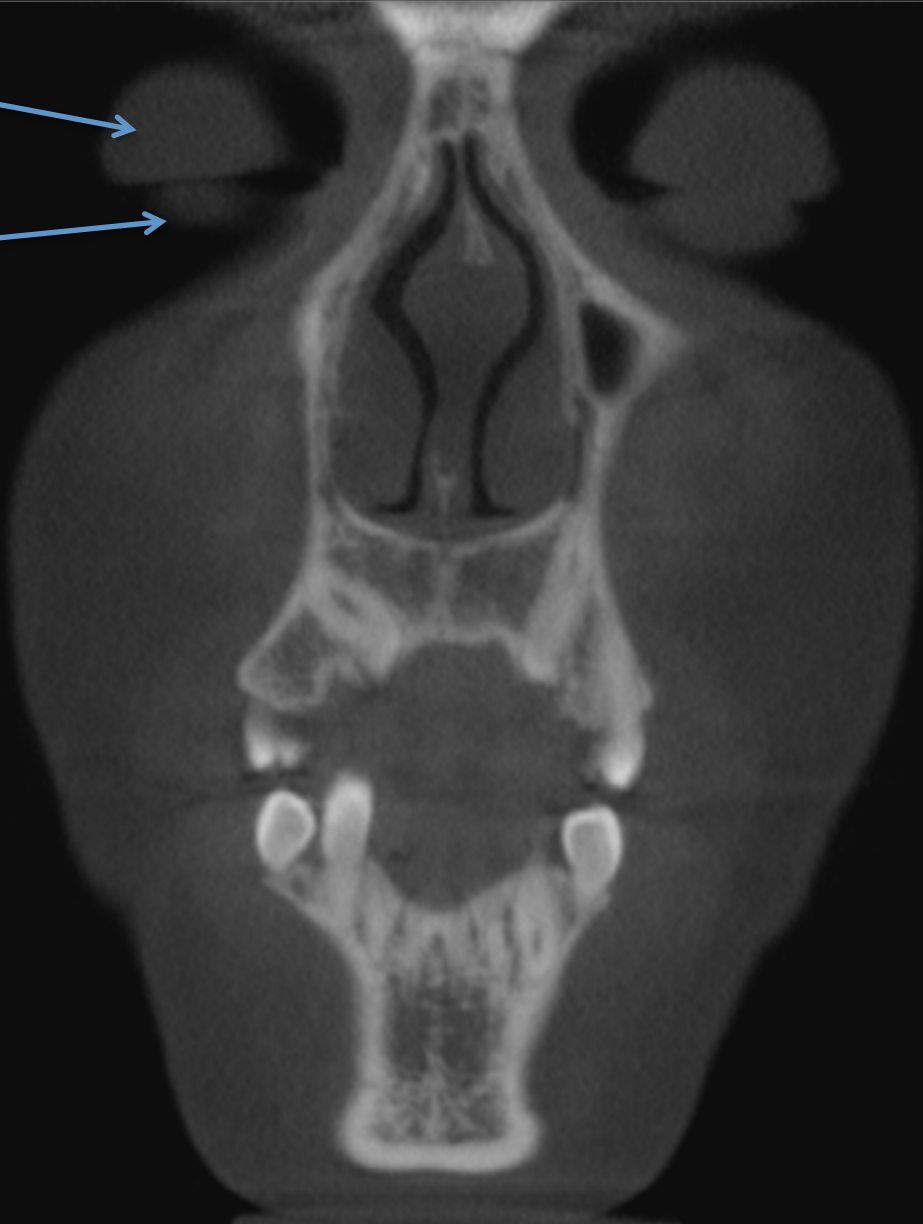
UNIVERSITY
OF MANITOBA

Rady Faculty of
Health Sciences

Eye lid

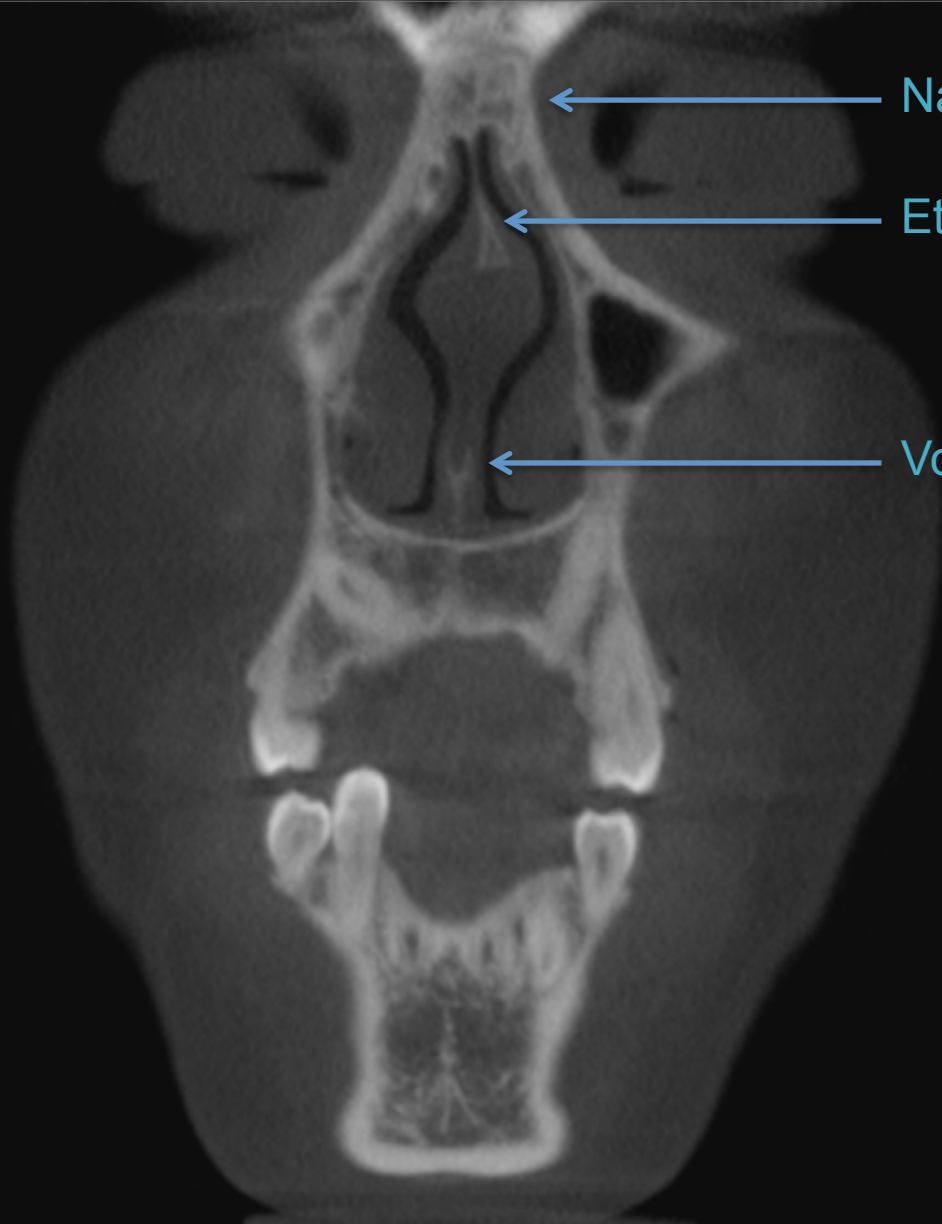


Orbit



UNIVERSITY
OF MANITOBA

Rady Faculty of
Health Sciences



Nasal bone

Ethmoid

Vomer



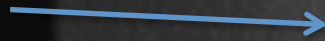
UNIVERSITY
OF MANITOBA

Rady Faculty of
Health Sciences

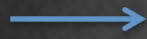
120
Cm

R

Roots of impacted
maxillary canines



Maxillary first premolars

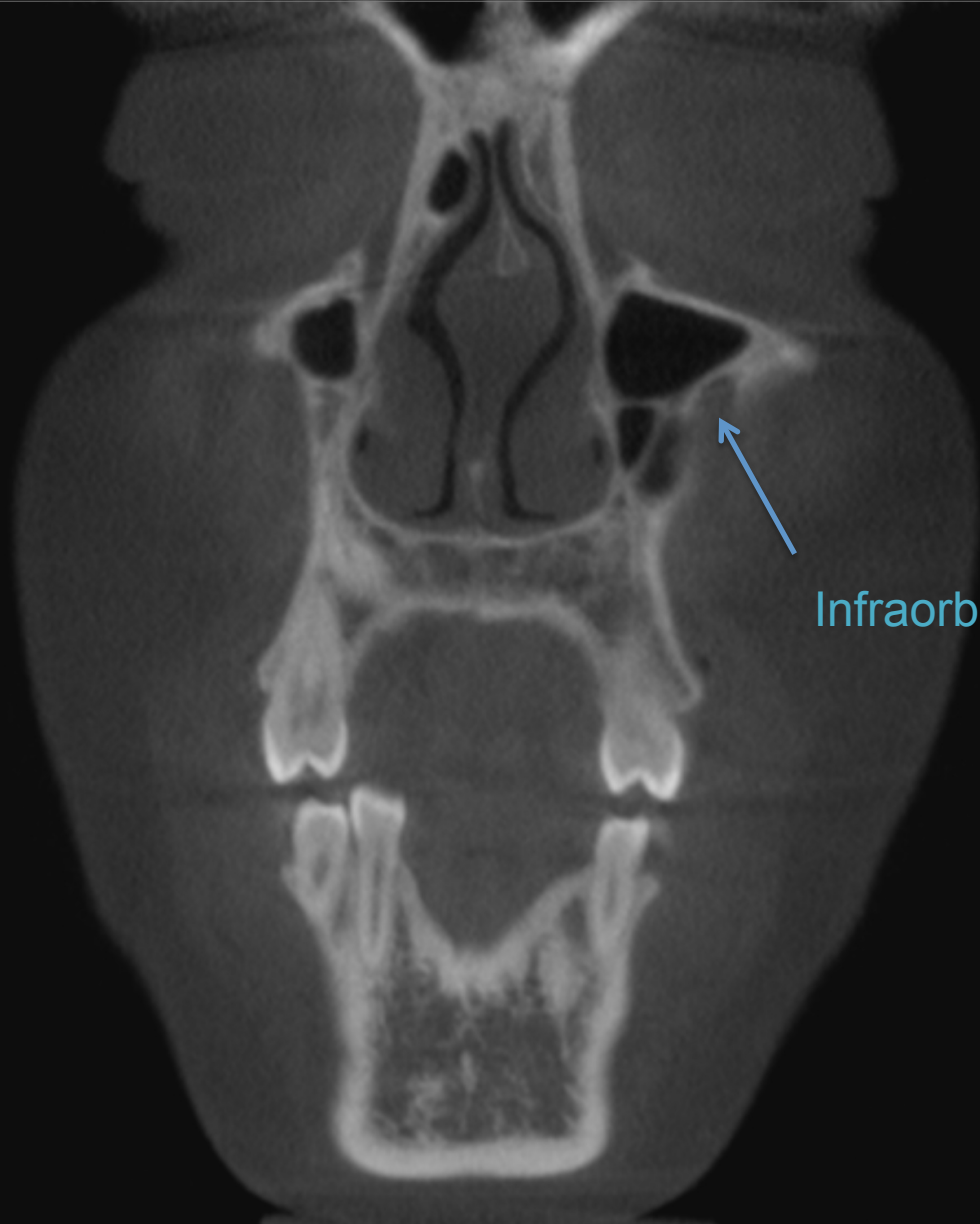


UNIVERSITY
OF MANITOBA

Rady Faculty of
Health Sciences

200
mm

R

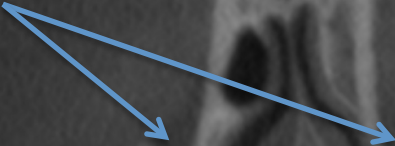


Infraorbital foramen

L

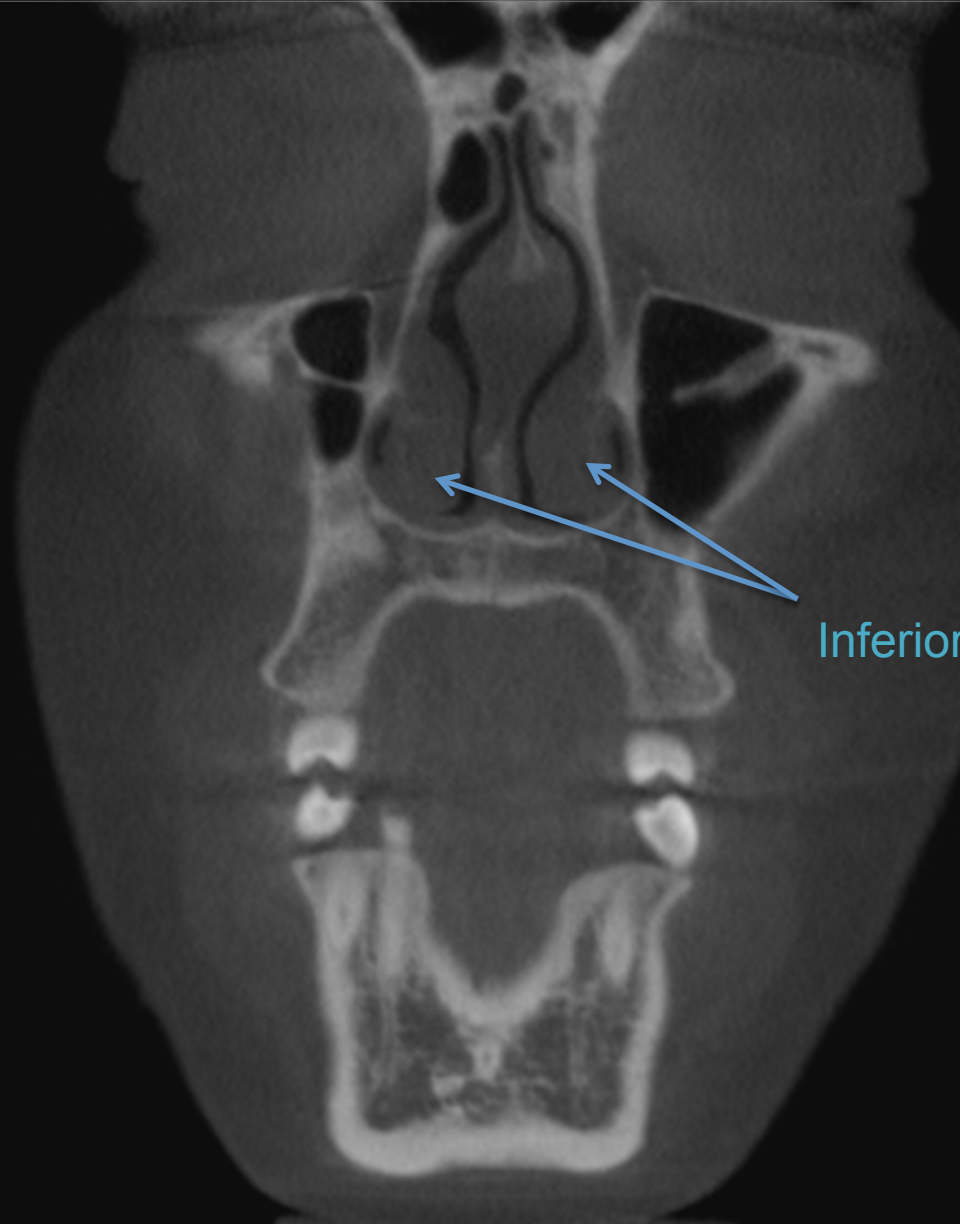


Lacrimal fossae



R

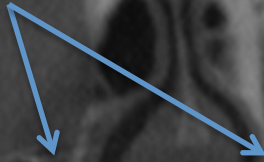
L



Inferior nasal conchae



Nasolacrimal ducts



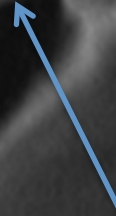
UNIVERSITY
OF MANITOBA

Rady Faculty of
Health Sciences

Frontal sinus

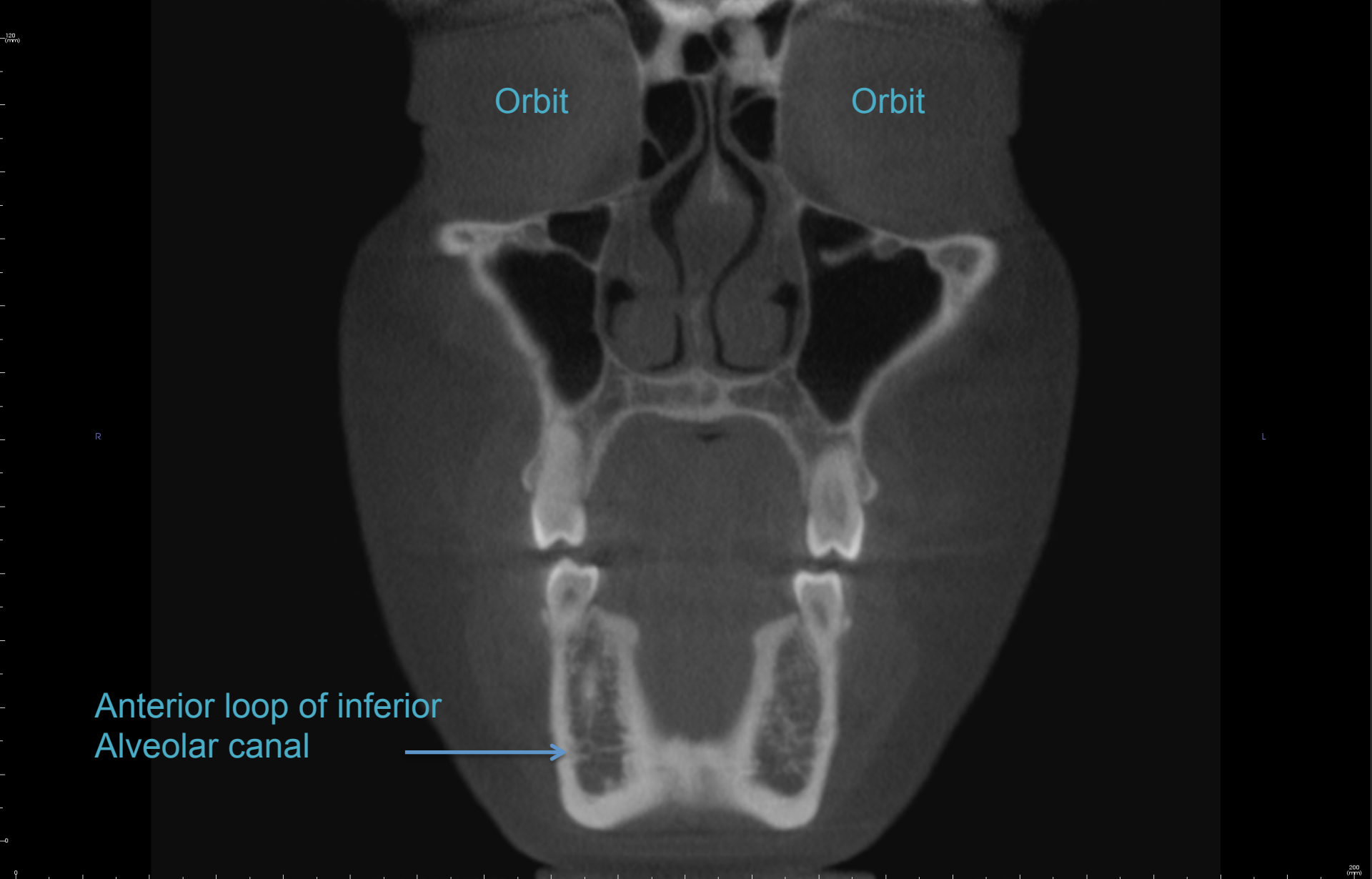


Infraorbital canal



UNIVERSITY
OF MANITOBA

Rady Faculty of
Health Sciences



Orbit

Orbit

Anterior loop of inferior
Alveolar canal



UNIVERSITY
OF MANITOBA

Rady Faculty of
Health Sciences

Cribiform plate



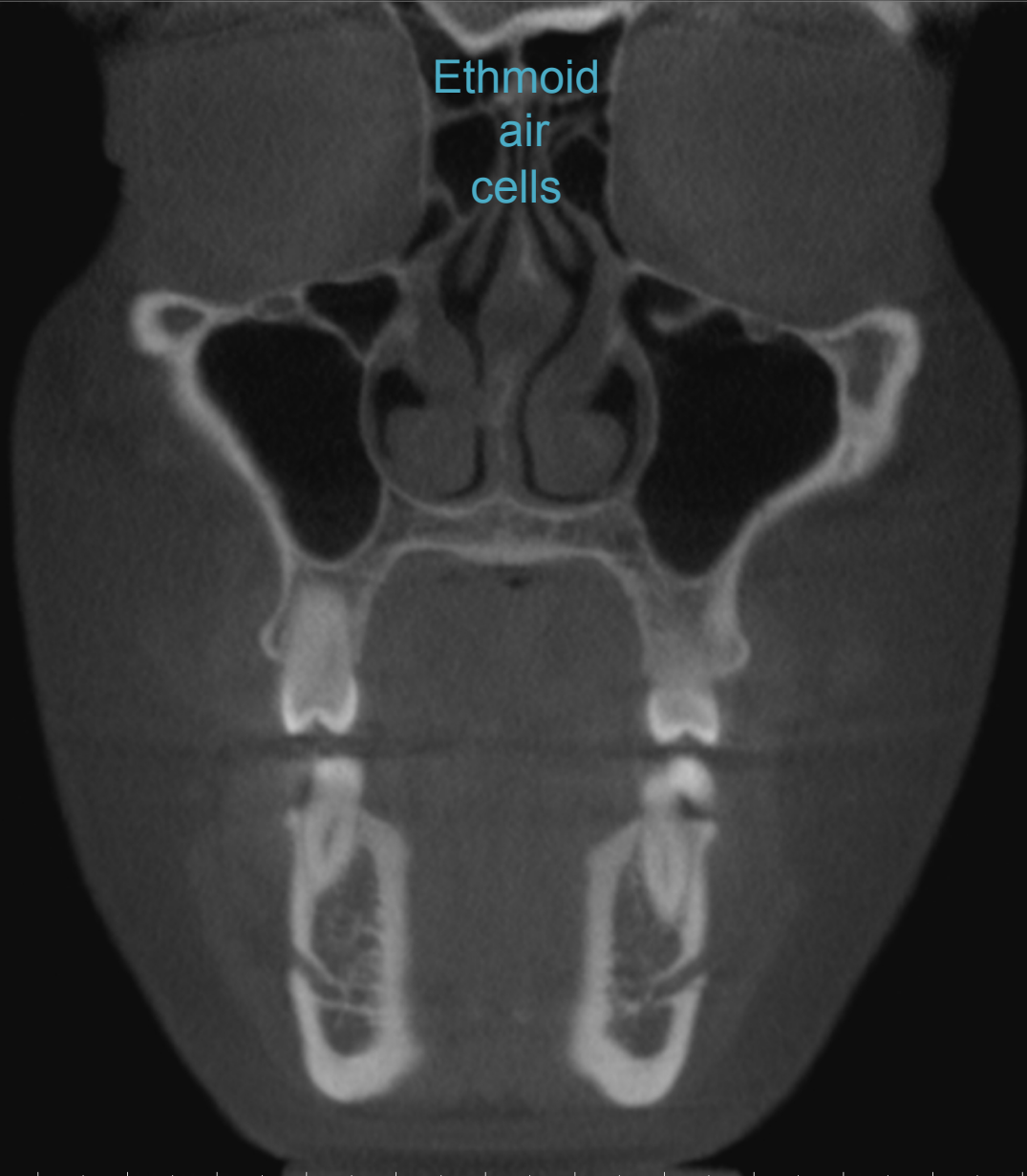
Mental foramen



UNIVERSITY
OF MANITOBA

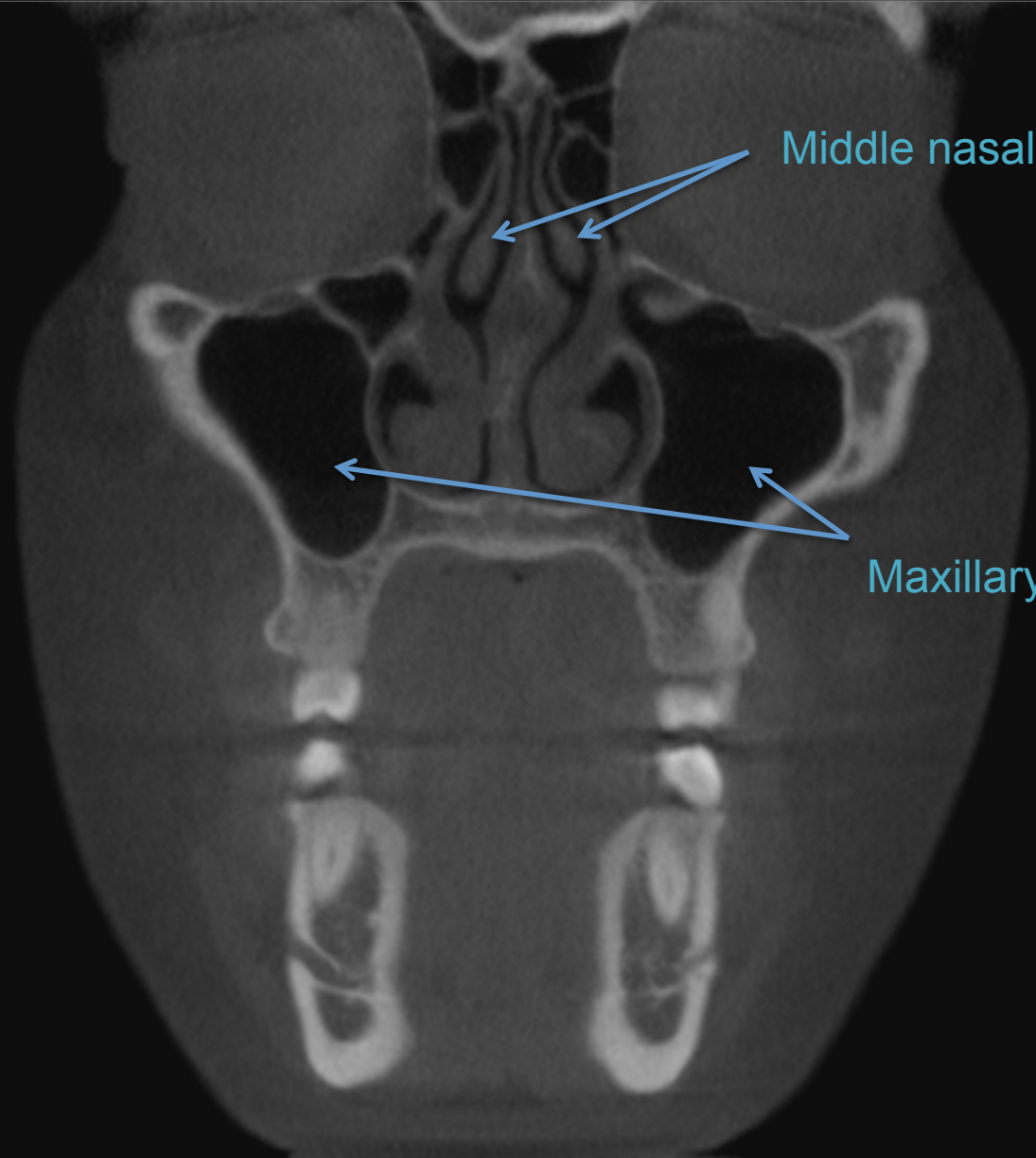
Rady Faculty of
Health Sciences

Ethmoid
air
cells



UNIVERSITY
OF MANITOBA

Rady Faculty of
Health Sciences



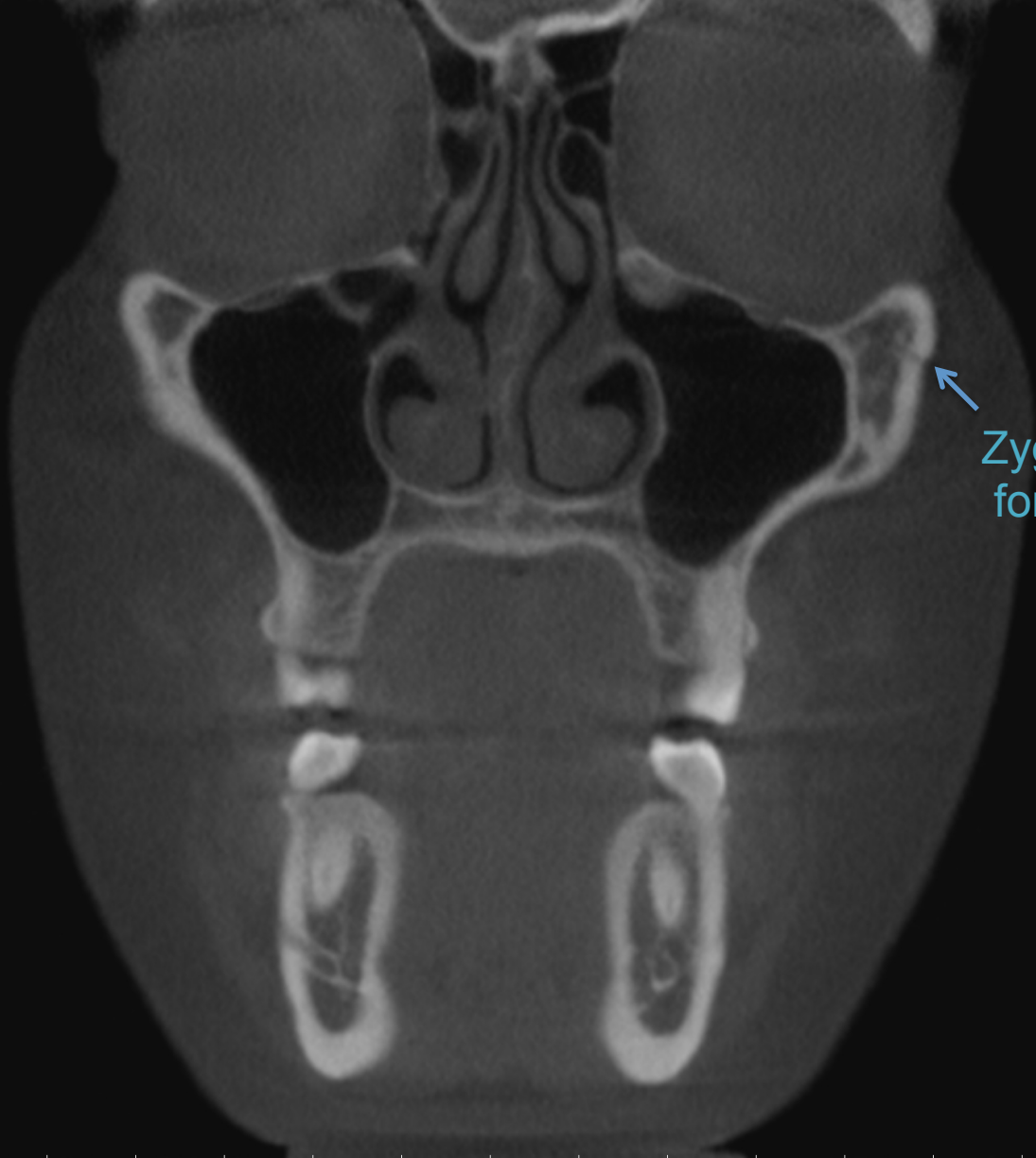
Middle nasal conchae

Maxillary sinuses



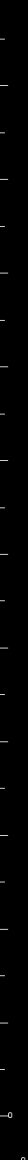
R

L



Zygomaticofacial foramen





R

L



120
(mm)

R

L



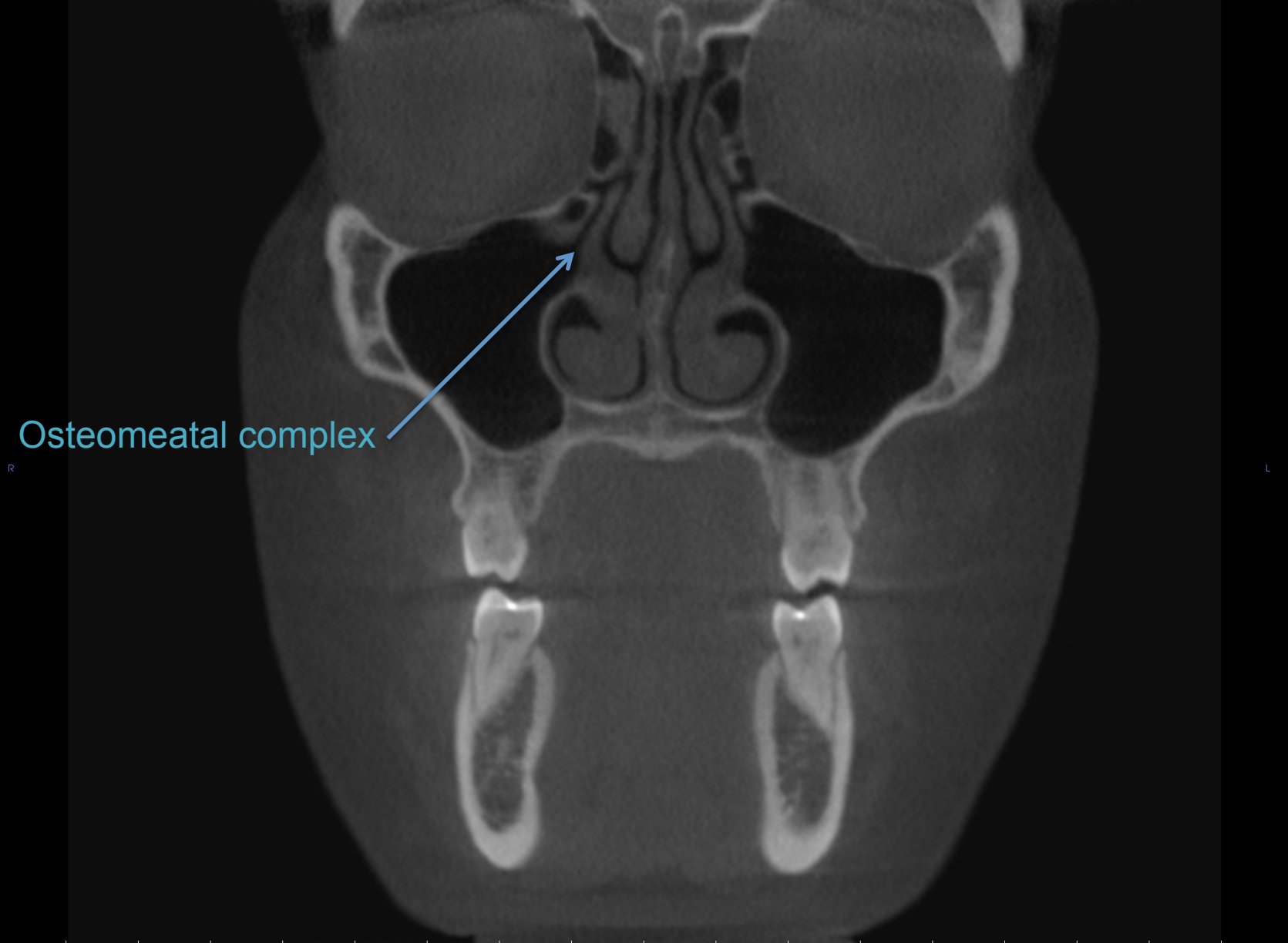
200
(mm)



UNIVERSITY
OF MANITOBA

Rady Faculty of
Health Sciences

120
(mm)



Osteomeatal complex

R

L

200
(mm)



UNIVERSITY
OF MANITOBA

Rady Faculty of
Health Sciences

120 (mm)
Crista galli



UNIVERSITY
OF MANITOBA

Rady Faculty of
Health Sciences

200 (mm)

120
(mm)

R

L

200
(mm)



UNIVERSITY
OF MANITOBA

Rady Faculty of
Health Sciences

120
(mm)

R

L

200
(mm)



UNIVERSITY
OF MANITOBA

Rady Faculty of
Health Sciences

R

L



UNIVERSITY
OF MANITOBA

Rady Faculty of
Health Sciences

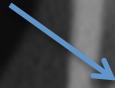
Zygomaticomaxillary
suture



UNIVERSITY
OF MANITOBA

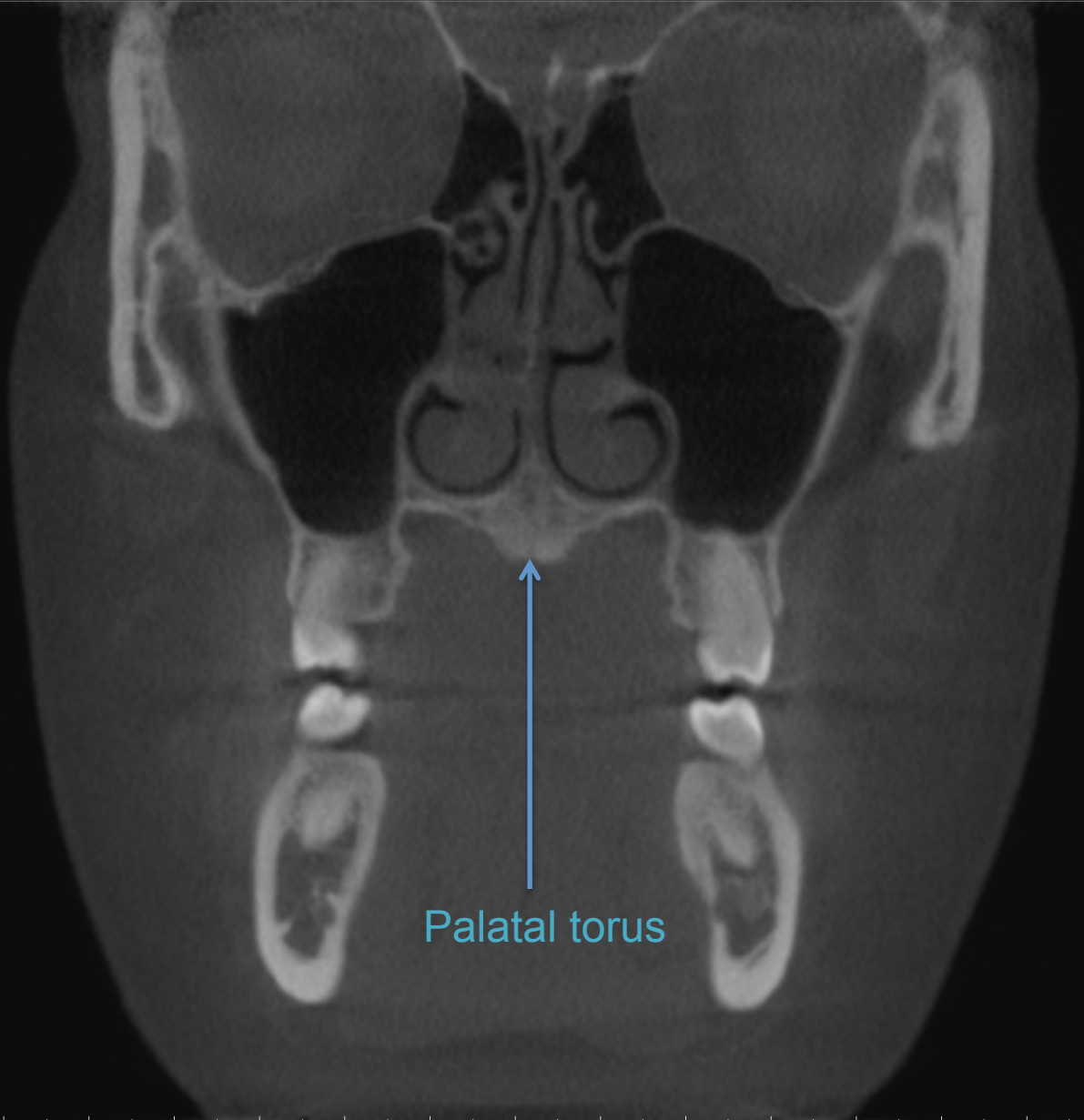
Rady Faculty of
Health Sciences

Zygomaticotemporal
canal



R

L



Palatal torus



R

L



UNIVERSITY
OF MANITOBA

Rady Faculty of
Health Sciences

120
Cm

R

L

200
mm



UNIVERSITY
OF MANITOBA

Rady Faculty of
Health Sciences

120
cm

R

L

200
cm

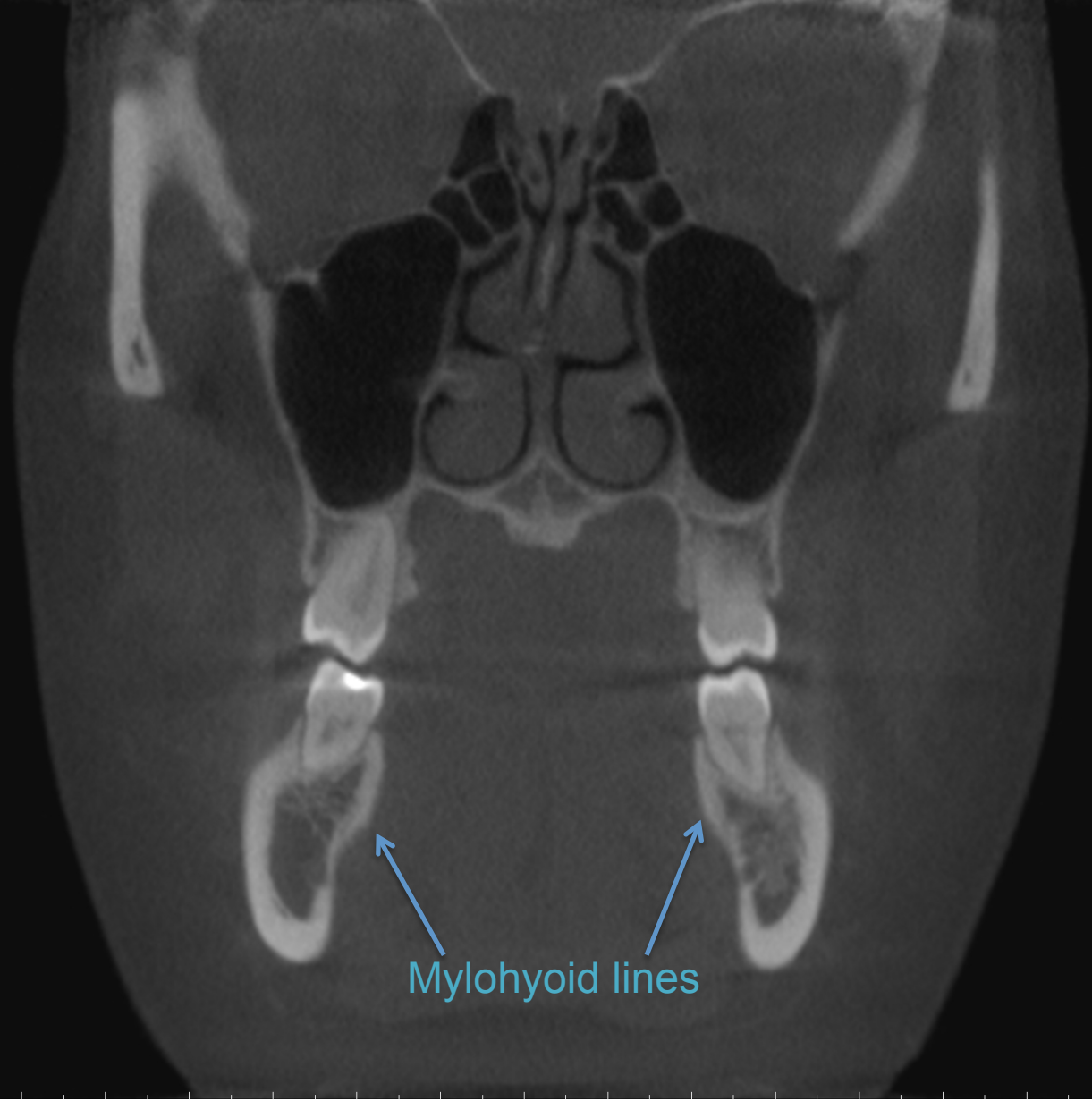


UNIVERSITY
OF MANITOBA

Rady Faculty of
Health Sciences

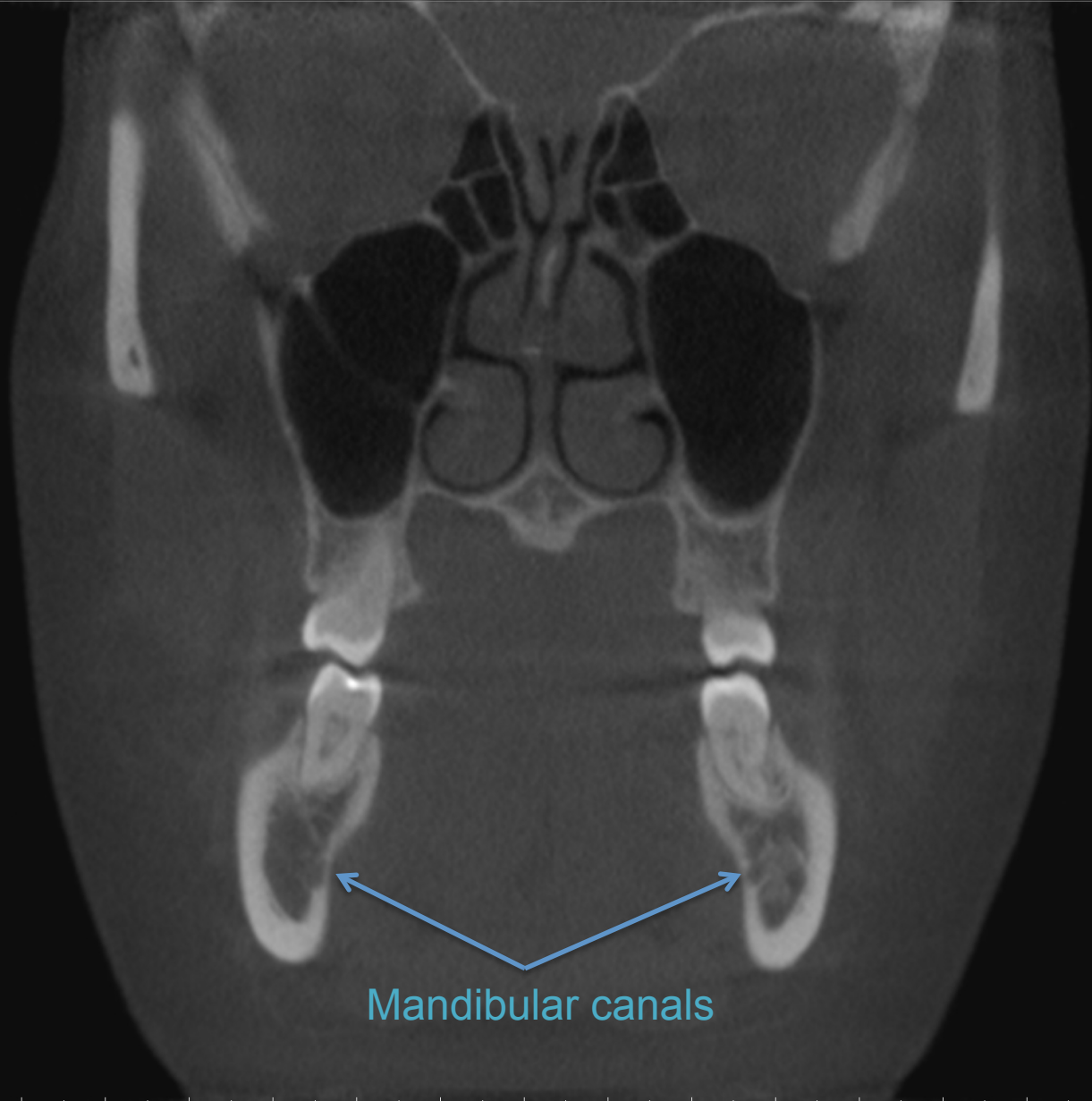
R

L



Mylohyoid lines





Mandibular canals





UNIVERSITY
OF MANITOBA

Rady Faculty of
Health Sciences

120
Cm

R

L

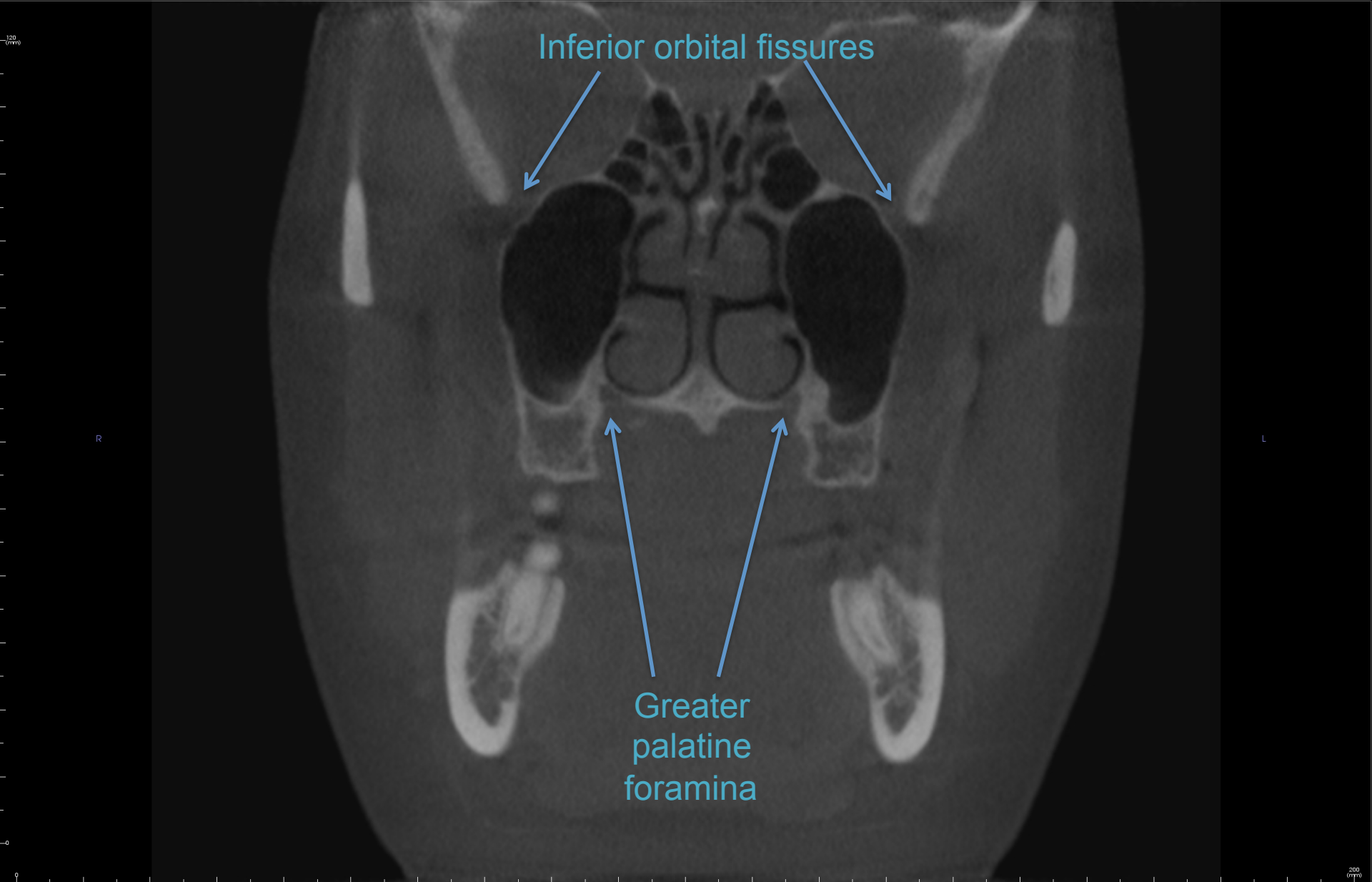


200
mm

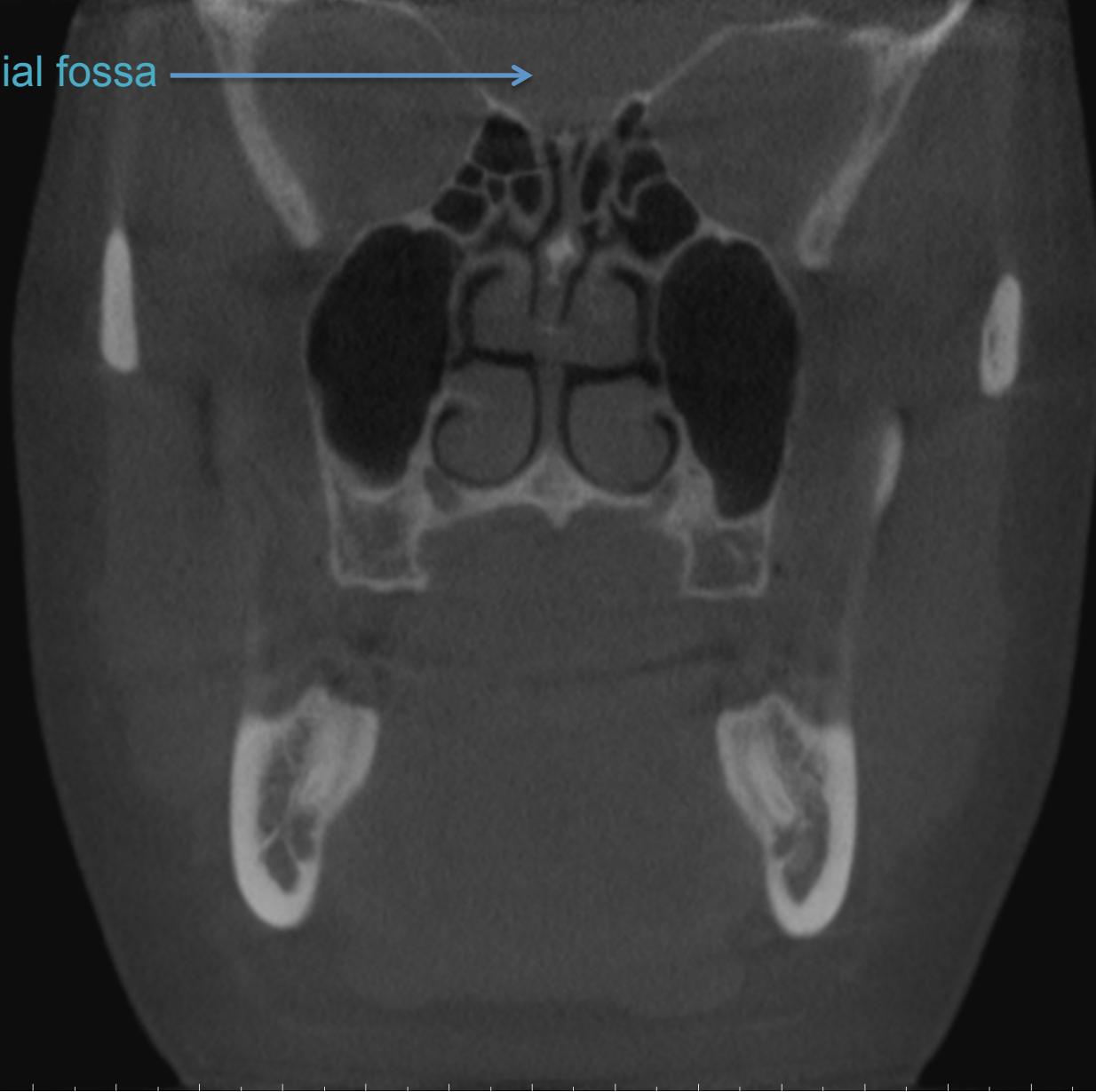


UNIVERSITY
OF MANITOBA

Rady Faculty of
Health Sciences



Anterior cranial fossa →



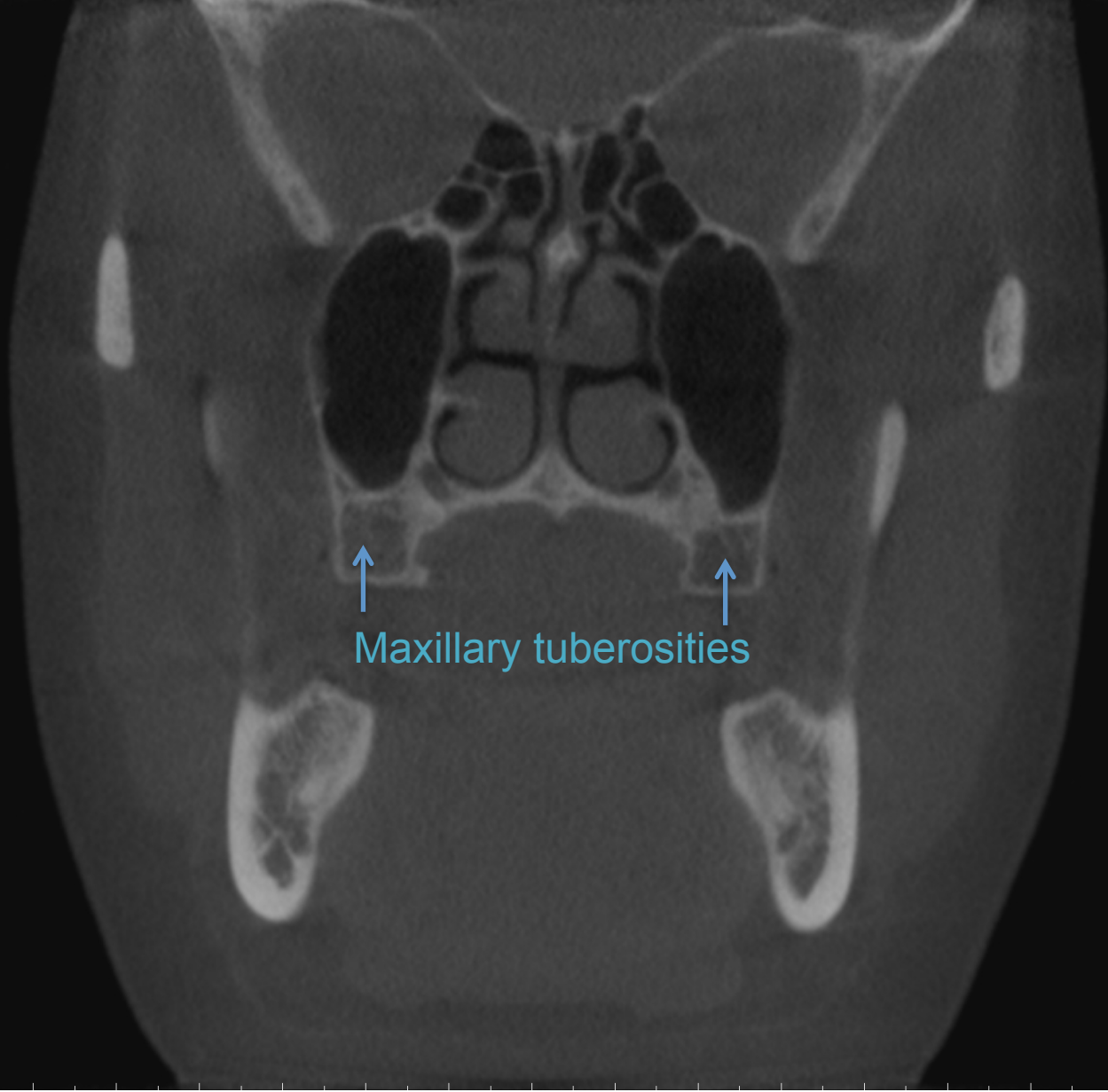
UNIVERSITY
OF MANITOBA

Rady Faculty of
Health Sciences

120
(mm)

R

L



Maxillary tuberosities

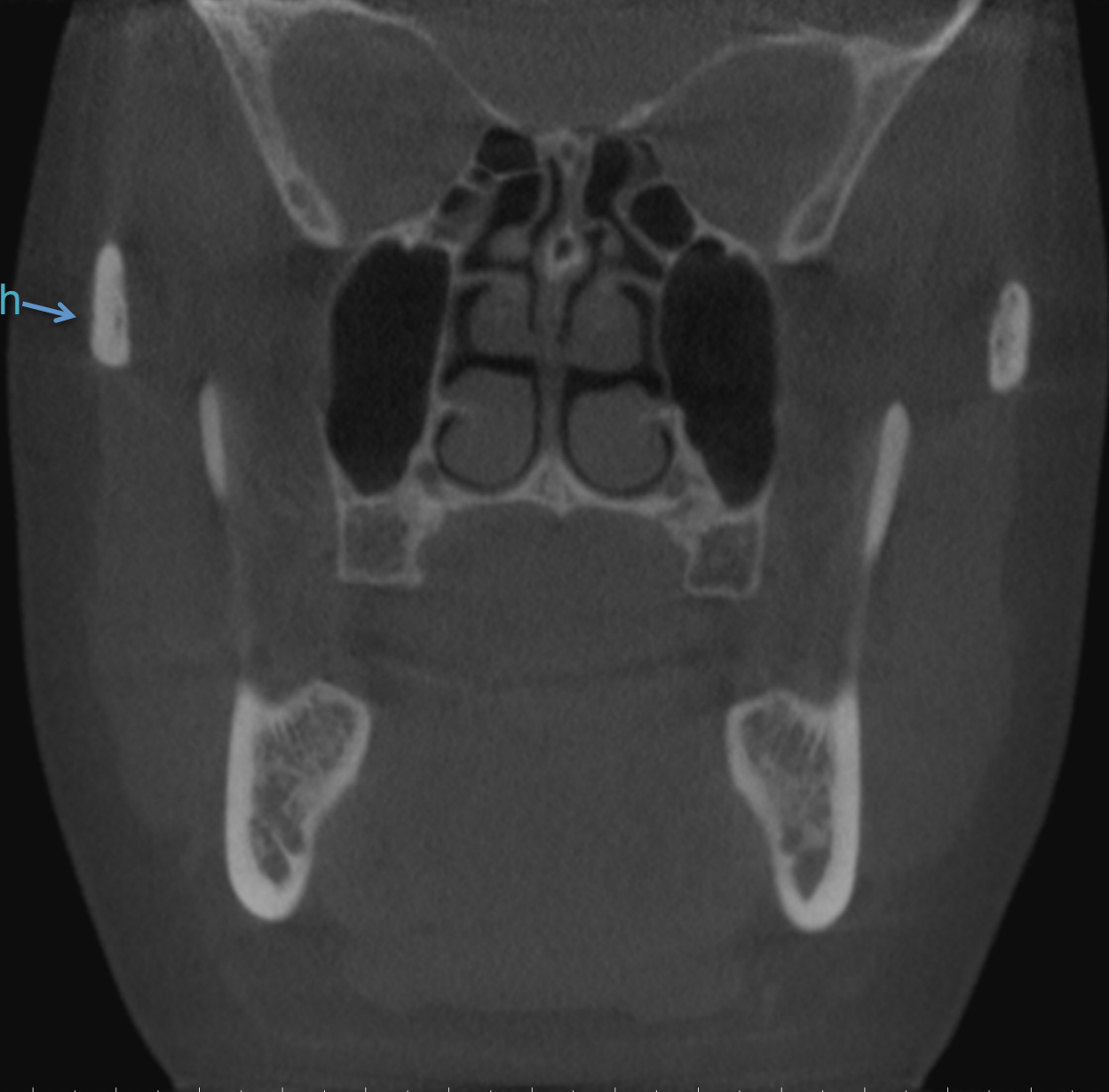
200
(mm)



UNIVERSITY
OF MANITOBA

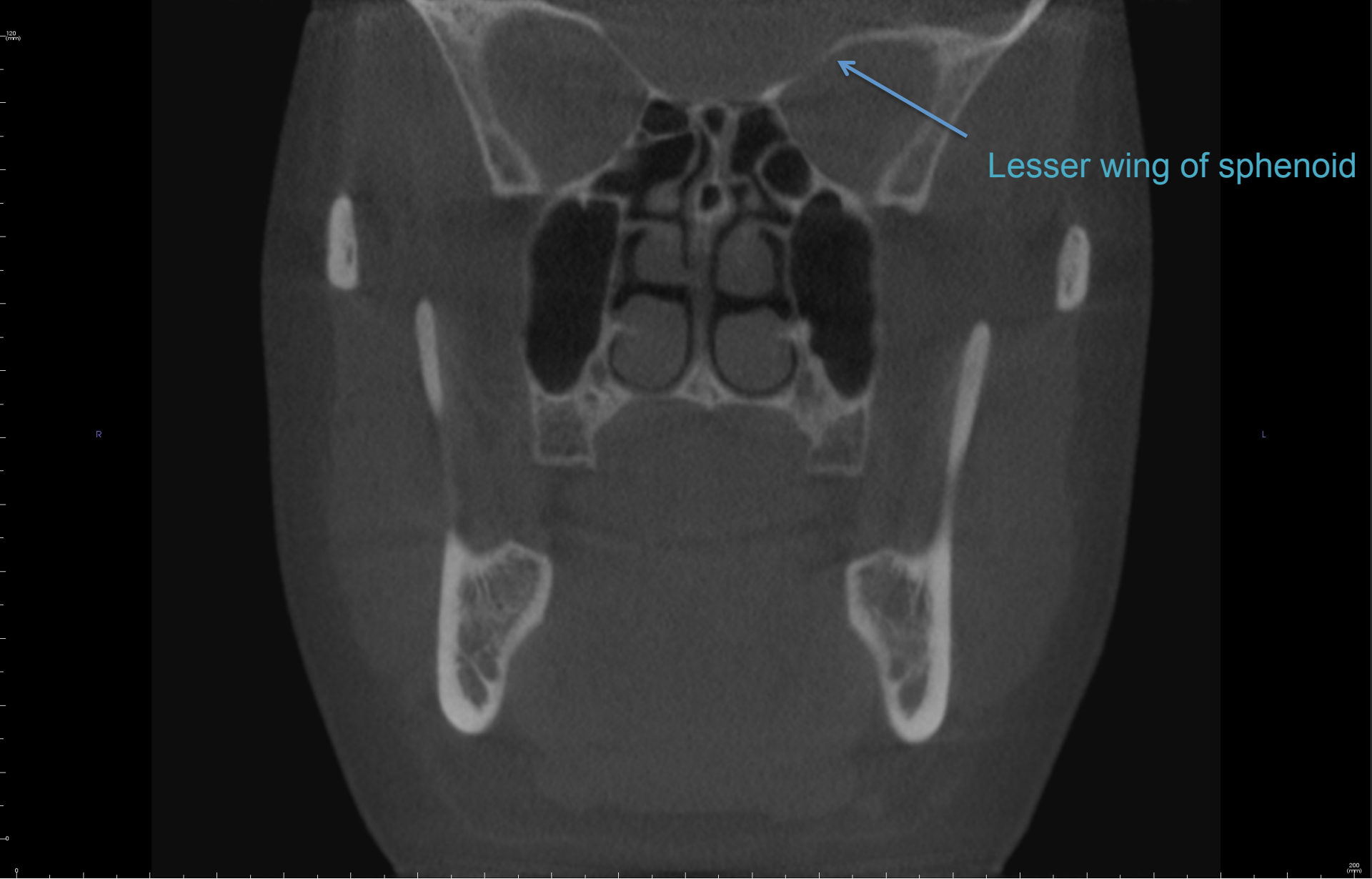
Rady Faculty of
Health Sciences

Zygomatic arch →



UNIVERSITY
OF MANITOBA

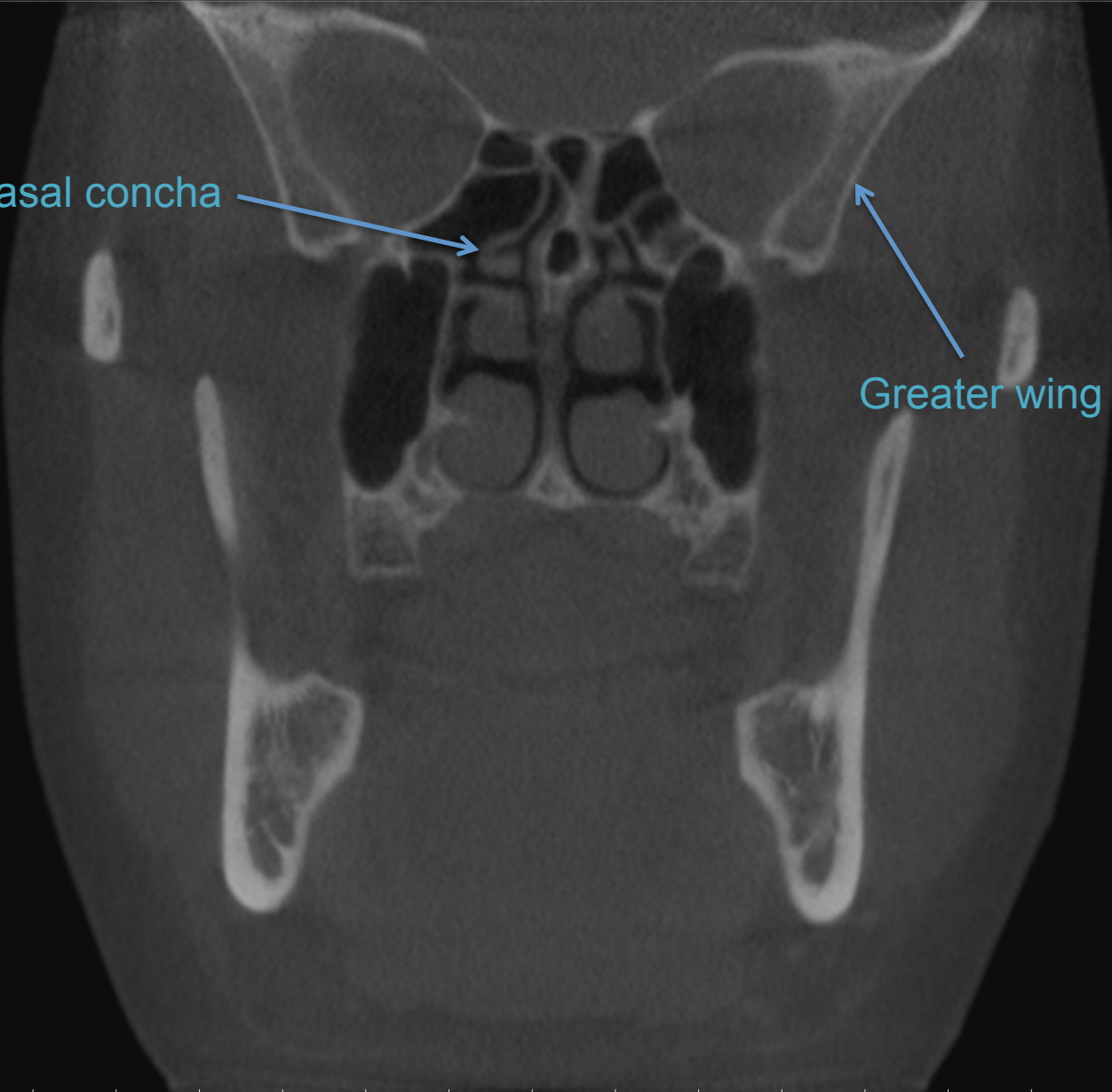
Rady Faculty of
Health Sciences



Superior nasal concha

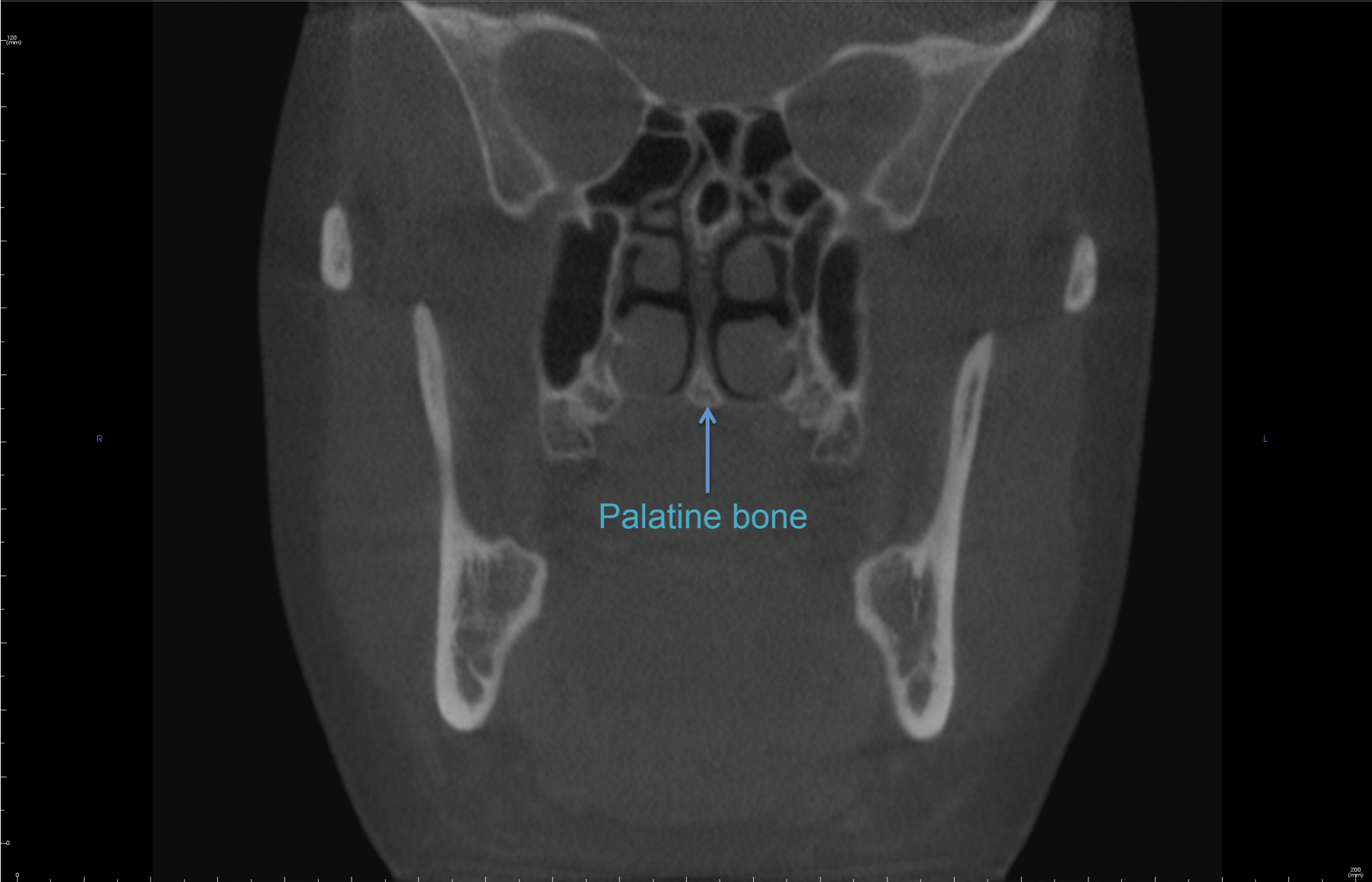


Greater wing of sphenoid



UNIVERSITY
OF MANITOBA

Rady Faculty of
Health Sciences



120
(mm)

R

L



200
(mm)



UNIVERSITY
OF MANITOBA

Rady Faculty of
Health Sciences



UNIVERSITY
OF MANITOBA

Rady Faculty of
Health Sciences

120
Cm

R

L



200
mm



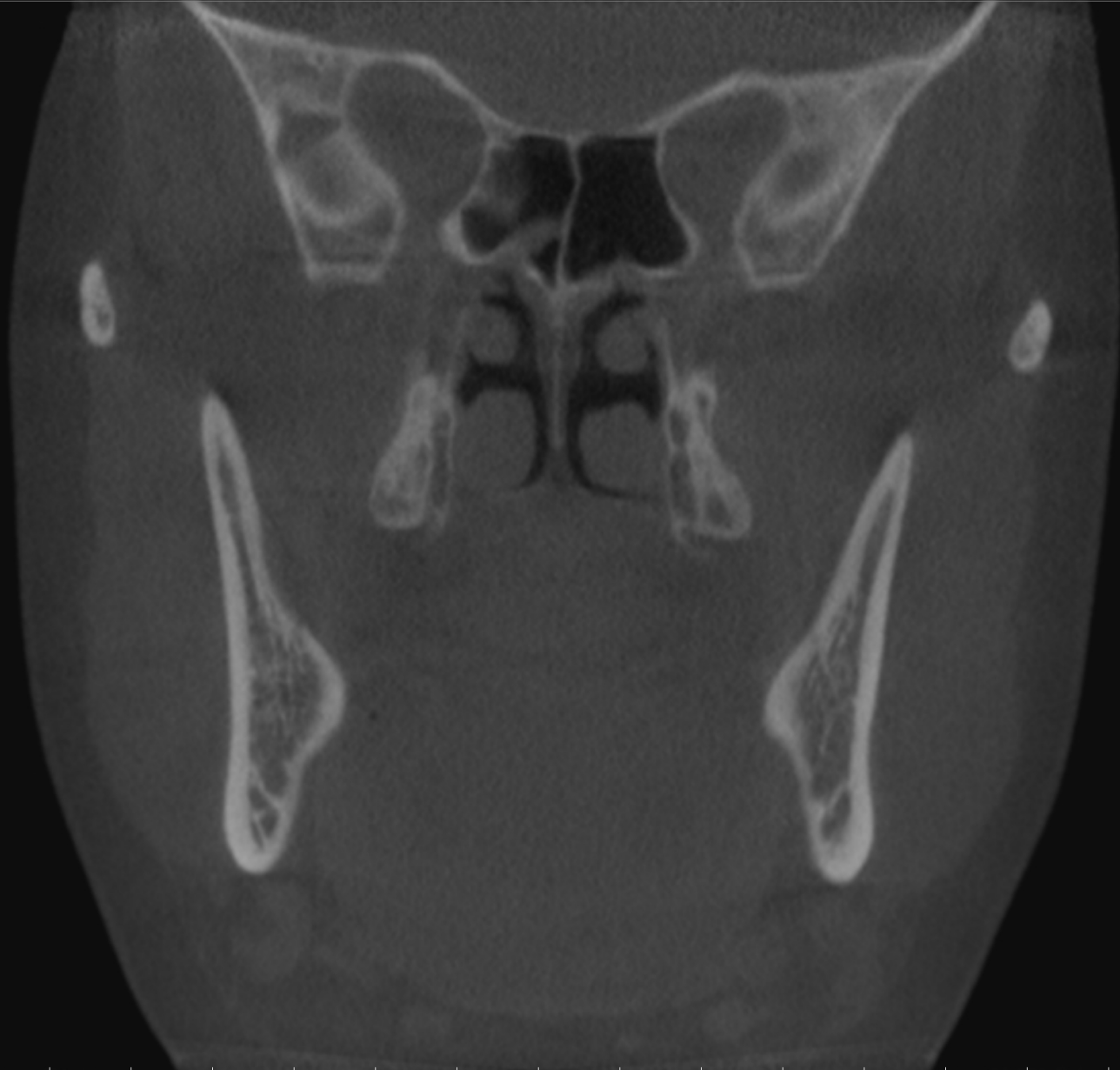
UNIVERSITY
OF MANITOBA

Rady Faculty of
Health Sciences

120
Cm

R

L

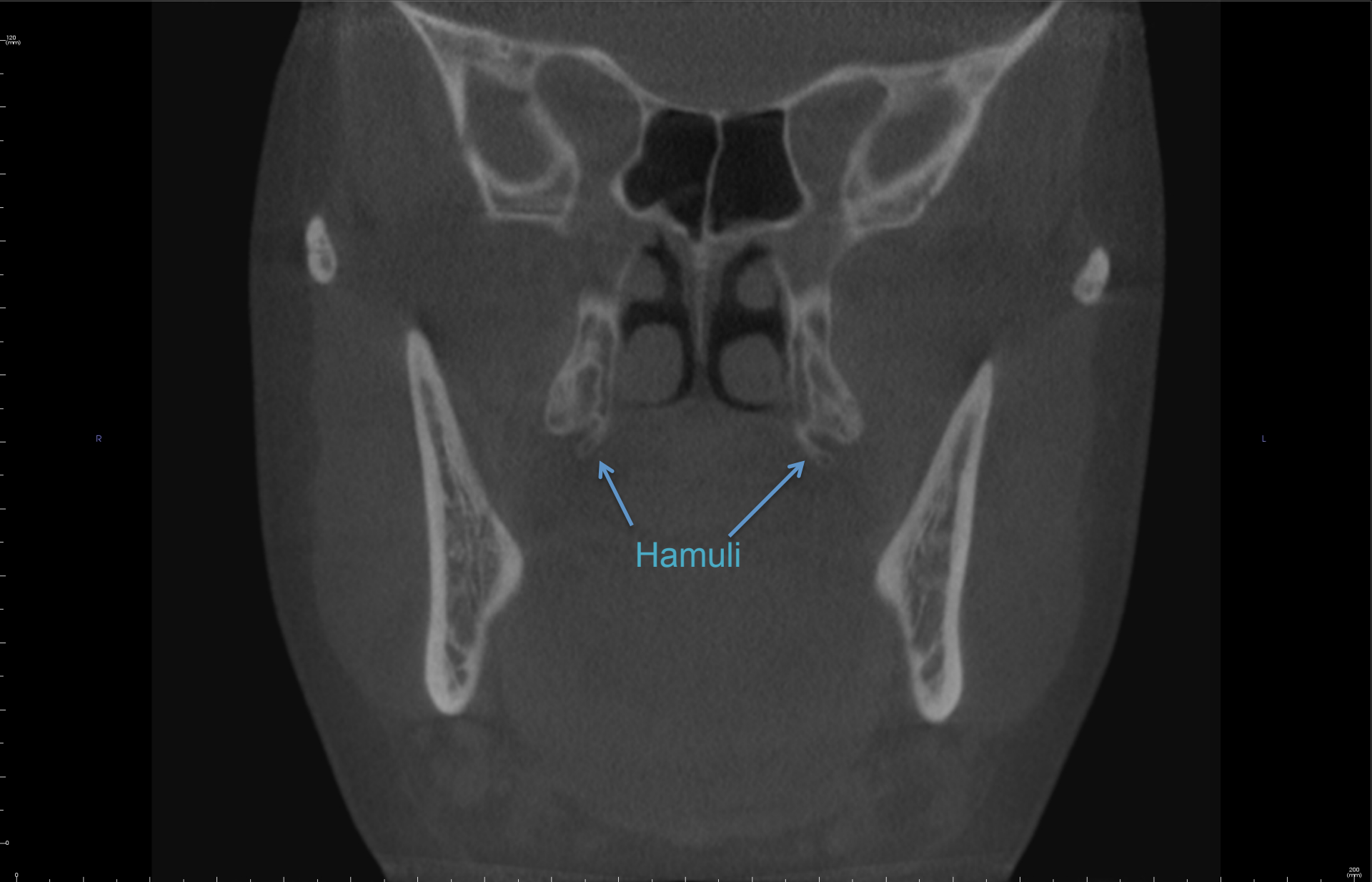


200
mm



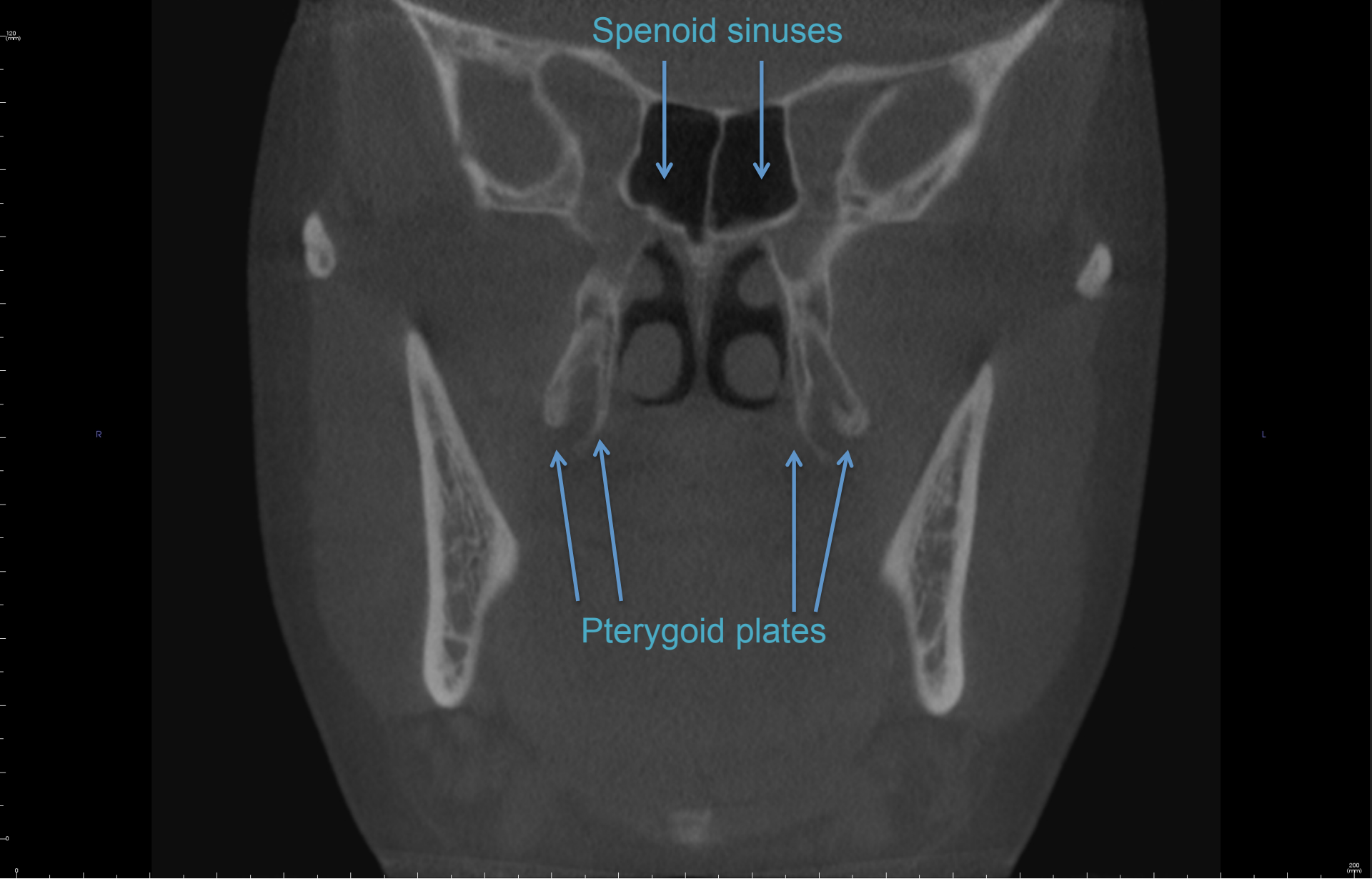
UNIVERSITY
OF MANITOBA

Rady Faculty of
Health Sciences



UNIVERSITY
OF MANITOBA

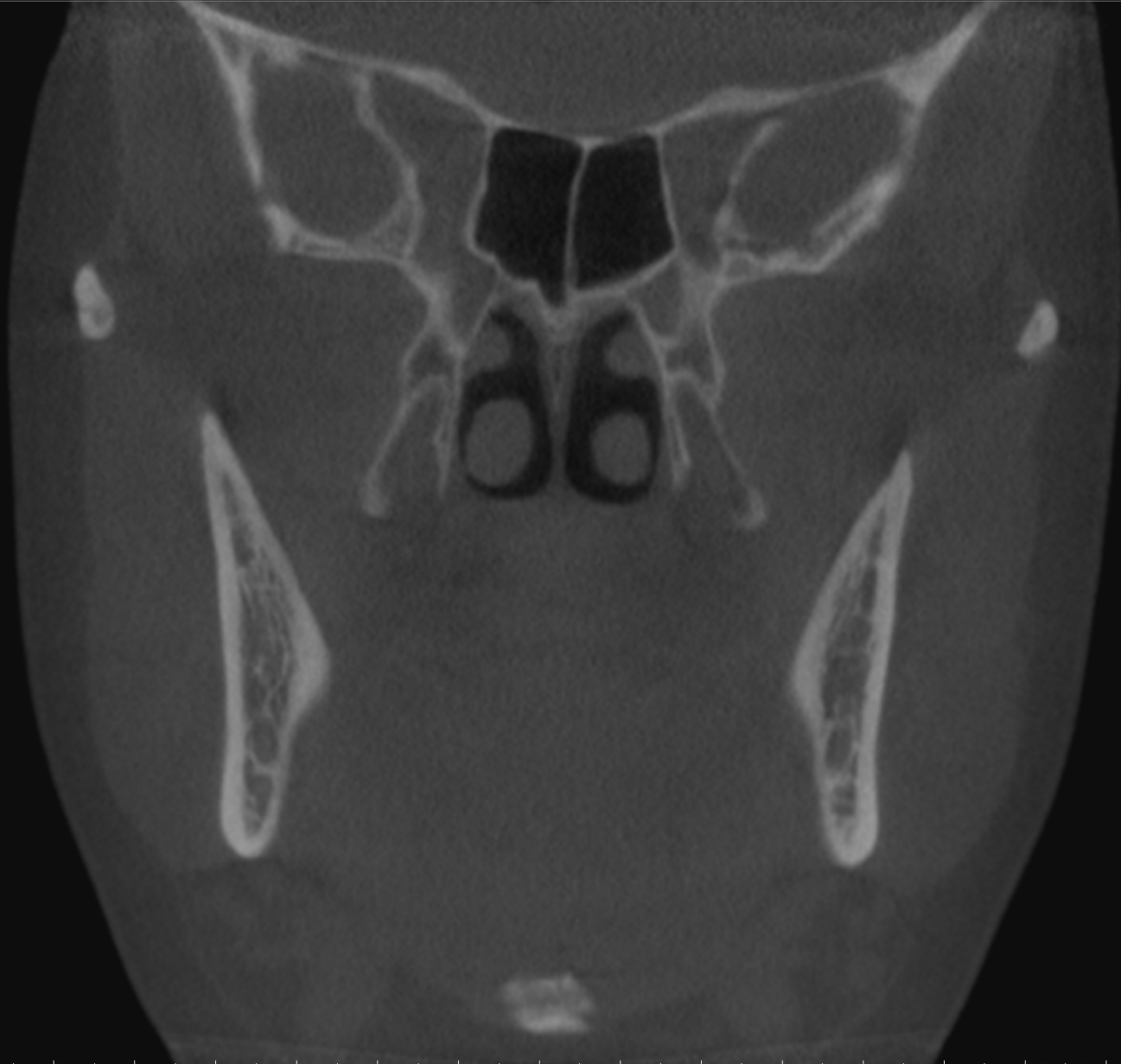
Rady Faculty of
Health Sciences



120
Cm

R

L



200
mm

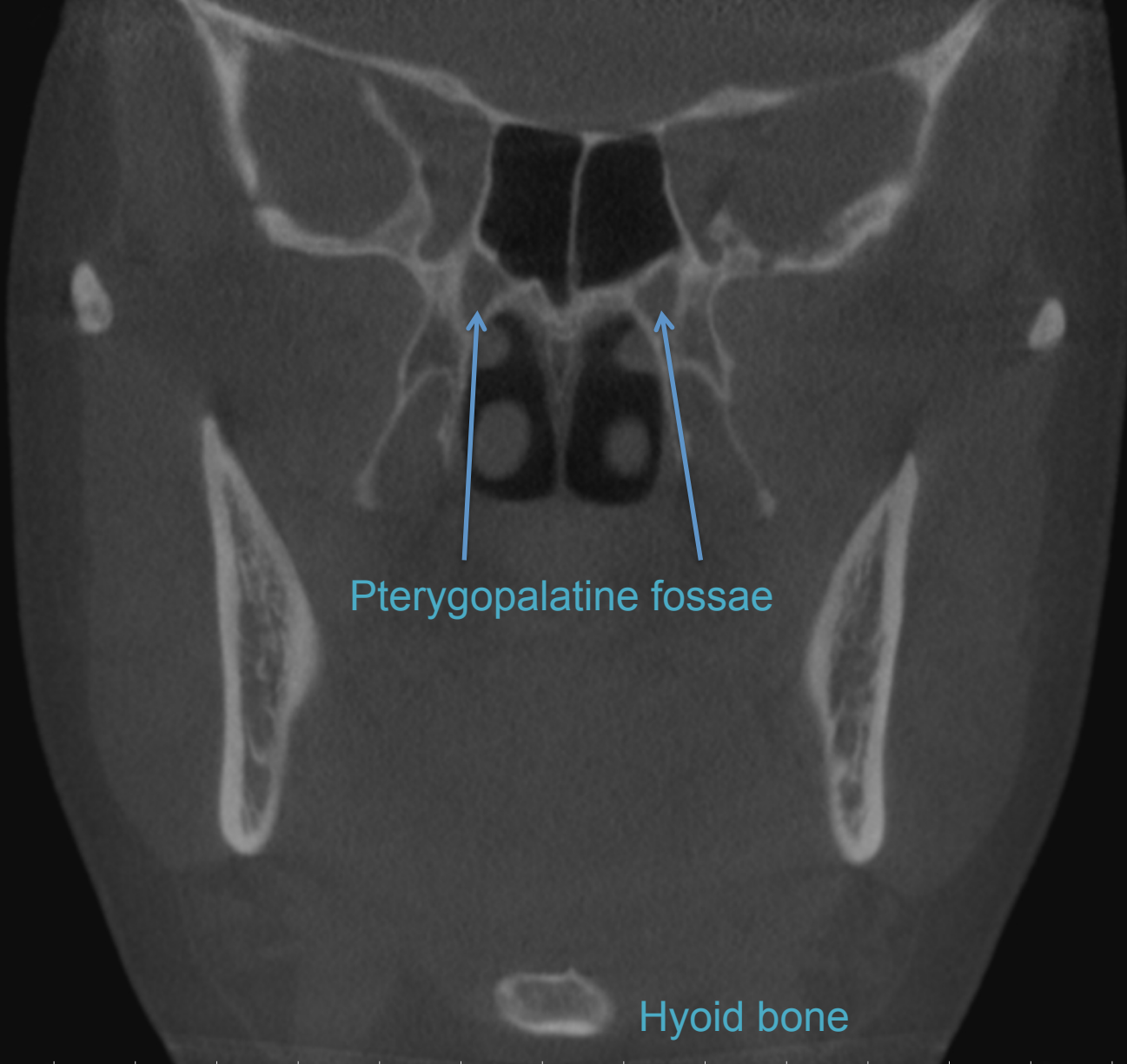


UNIVERSITY
OF MANITOBA

Rady Faculty of
Health Sciences

R

L



Pterygopalatine fossae

Hyoid bone

