

DISCOVER SOLITAIRE™ X



SOLITAIRE™ X

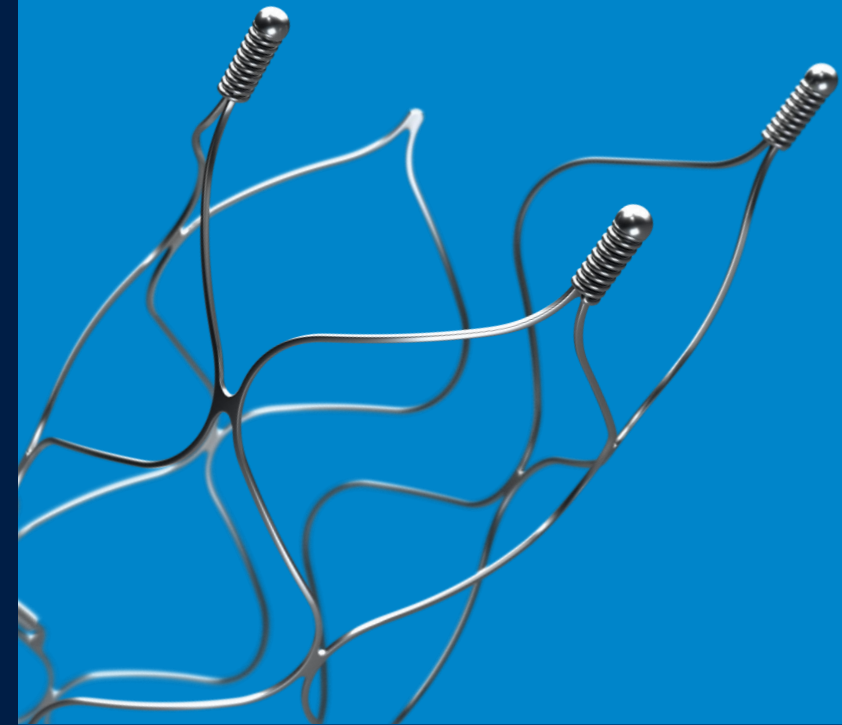
UNIQUE
PARAMETRIC
DESIGN



ENHANCED
VISUALIZATION



SOLITAIRE™ X
INFORMATION



Medtronic
Further, Together

UNIQUE PARAMETRIC DESIGN

REVOLUTIONIZING MECHANICAL THROMBECTOMY



SAFETY
With consistent cell area



EFFICACY
With improved clot retention



ADAPTABILITY
With overlapping stent-based design



CONFIDENCE
During the procedure

CLICK  TO
LEARN MORE

Parametric™ design features an overlapping stent-based design, provides revolutionary technology to restore flow, retrieve clot, and revive neurological tissue (58.2% good Neurological Outcomes) based on data from the SWIFT trial

WATCH IT
IN ACTION



**UNIQUE
PARAMETRIC
DESIGN**

**ENHANCED
VISUALIZATION**

**SOLITAIRE™
X
INFORMATION**



Medtronic

UNIQUE PARAMETRIC DESIGN

REVOLUTIONIZING MECHANICAL THROMBECTOMY



SAFETY
With consistent cell area



EFFICACY
With improved clot retention



ADAPTABILITY
With overlapping stent-based design



CONFIDENCE
During the procedure

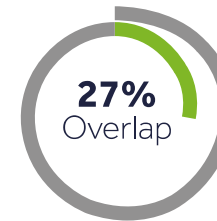
SAFETY

WITH CONSISTENT & STABLE CELL AREA

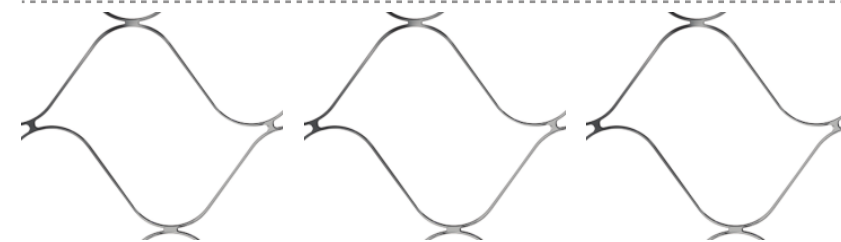
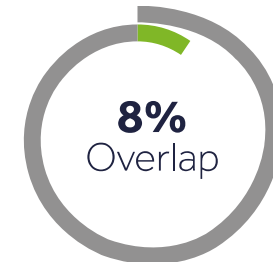
2mm Vessel



3mm Vessel



4mm Vessel



Values for Solitaire™ X and Solitaire™ Platinum 4x40^{1,2}

Solitaire parametric design is providing a **consistent and stable cell area** in order to optimize clot retention according to varying anatomies

UNIQUE
PARAMETRIC
DESIGN

ENHANCED
VISUALIZATION

SOLITAIRE™
X
INFORMATION



REF

Medtronic

UNIQUE PARAMETRIC DESIGN

REVOLUTIONIZING MECHANICAL THROMBECTOMY



SAFETY
With consistent cell area

EFFICACY
With improved clot retention



ADAPTABILITY
With overlapping stent-based design

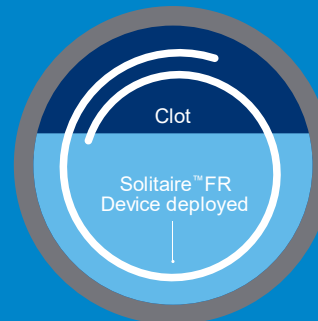
CONFIDENCE
During the procedure

EFFICACY WITH IMPROVED CLOT RETENTION

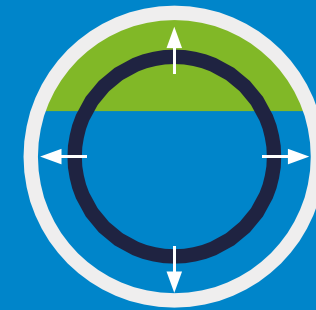
UNIQUE PARAMETRIC DESIGN

ENHANCED VISUALIZATION

SOLITAIRE™
X INFORMATION



Depiction of 4 x 20 Solitaire™ FR Device in a 2mm vessel



Depiction of a standard competitor device, designed with only one plane of contact³

The Solitaire™ Platinum device is a unique stent retriever with an overlapping design **providing multiple planes of clot integration contact** and a differentiated radial outward force



REF

Medtronic

UNIQUE PARAMETRIC DESIGN

REVOLUTIONIZING MECHANICAL THROMBECTOMY



SAFETY
With consistent cell area

EFFICACY
With improved clot retention



ADAPTABILITY
With overlapping stent-based design

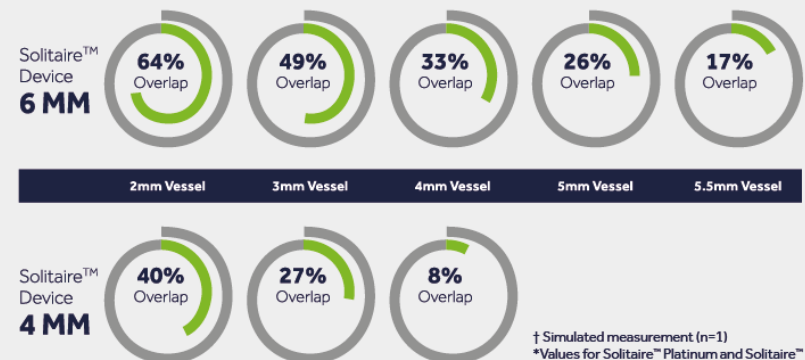
CONFIDENCE
During the procedure

ADAPTABILITY WITH OVERLAPPING STENT-BASED DESIGN

UNIQUE
PARAMETRIC
DESIGN

ENHANCED
VISUALIZATION

SOLITAIRE™
X
INFORMATION



The overlapping stent design allows the device to **expand in larger vessels and compress in smaller vessels** during deployment and retrieval²



REF

Medtronic

UNIQUE PARAMETRIC DESIGN

REVOLUTIONIZING MECHANICAL THROMBECTOMY



SAFETY
With consistent cell area

EFFICACY
With improved clot retention



ADAPTABILITY
With overlapping stent-based design

CONFIDENCE
During the procedure

CONFIDENCE DURING THE PROCEDURE



SOLITAIRE 4x40*
OPTUSE ANGLE

SOLITAIRE 4x40*
ACUTE ANGLE

*Illustrated images based on actual photo from R&D data

CLOSE VESSEL WALL APPPOSITION⁵

Maintains the thrombus engaged within its struts during the retrieval
Limits device elongation and foreshortening during deployment and delivery

UNIQUE
PARAMETRIC
DESIGN

ENHANCED
VISUALIZATION

SOLITAIRE™
X
INFORMATION



REF

Medtronic

UNIQUE PARAMETRIC DESIGN

REVOLUTIONIZING MECHANICAL THROMBECTOMY



**UNIQUE
PARAMETRIC
DESIGN**

**ENHANCED
VISUALIZATION**

**SOLITAIRE™
X
INFORMATION**



Medtronic

ENHANCED VISUALIZATION



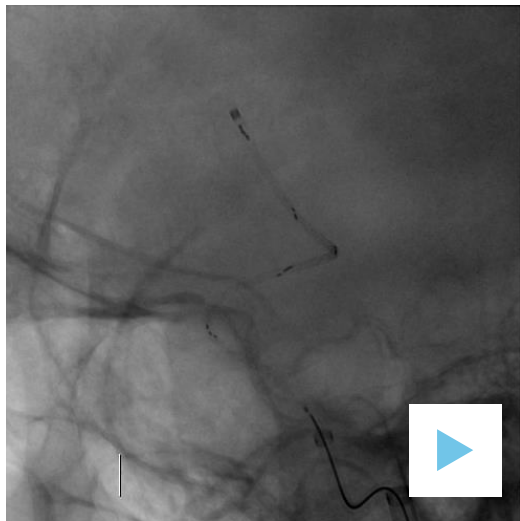
The Solitaire™ Platinum and Solitaire™ X devices are enhanced with distinctive, evenly spaced **platinum markers** to provide improved visualization for accurate alignment and clot retrieval. Combination of unique parametric design and enhanced visualization gives greater confidence during interventional stroke procedure

UNIQUE
PARAMETRIC
DESIGN

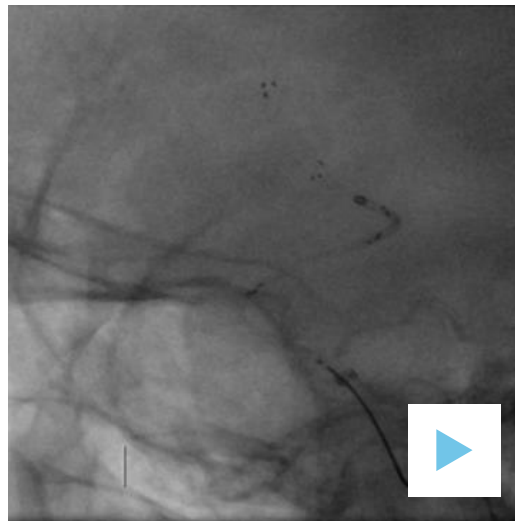
ENHANCED
VISUALIZATION

SOLITAIRE™
X
INFORMATION

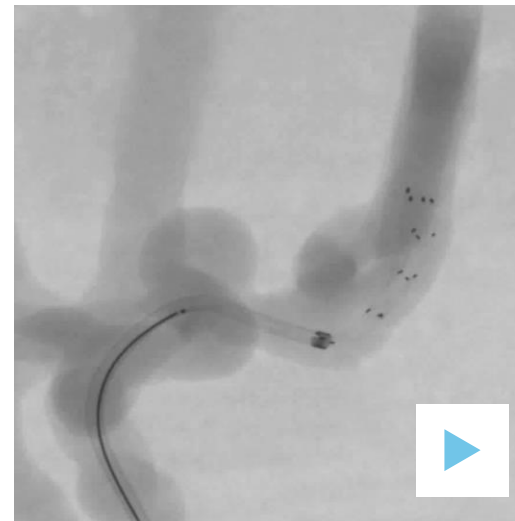
ALIGN IT



VISUALIZE IT



RETRIEVE IT



Images: Solitaire™ Platinum



Medtronic



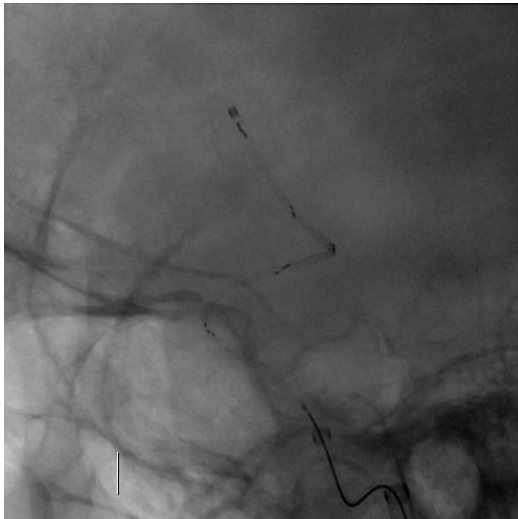
Visualize optimal working length of the Solitaire™ Platinum or Solitaire™ X device for **accurate stent alignment**

UNIQUE
PARAMETRIC
DESIGN

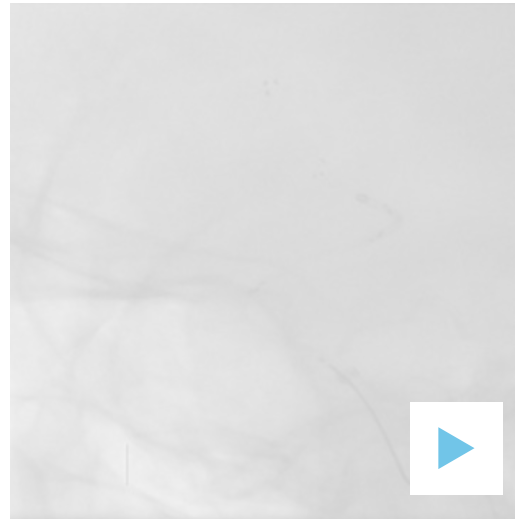
ENHANCED
VISUALIZATION

SOLITAIRE™
X
INFORMATION

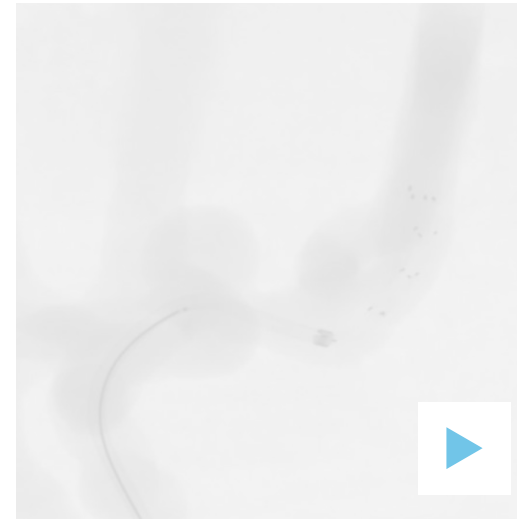
ALIGN IT



VISUALIZE IT



RETRIEVE IT



Images: Solitaire™ Platinum



ENHANCED VISUALIZATION



Visualize both expansion and compression of the Solitaire™ Platinum or Solitaire™ X device upon deployment with **unique, evenly spaced Platinum markers** for real-time procedural feedback

UNIQUE
PARAMETRIC
DESIGN

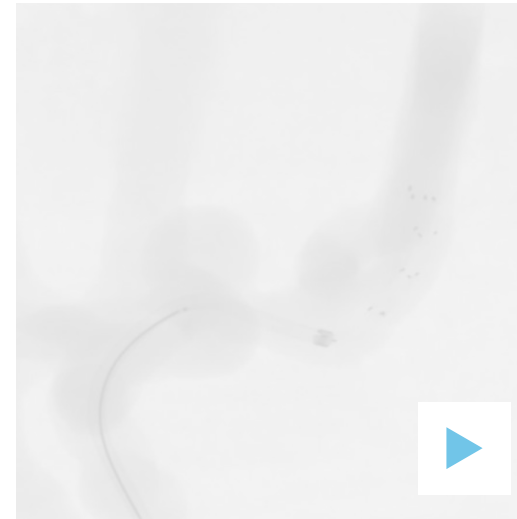
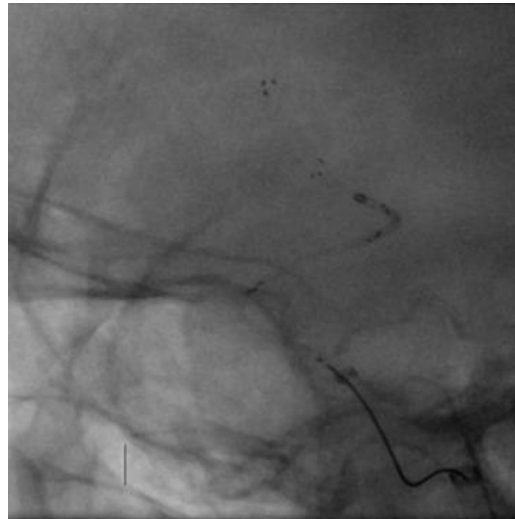
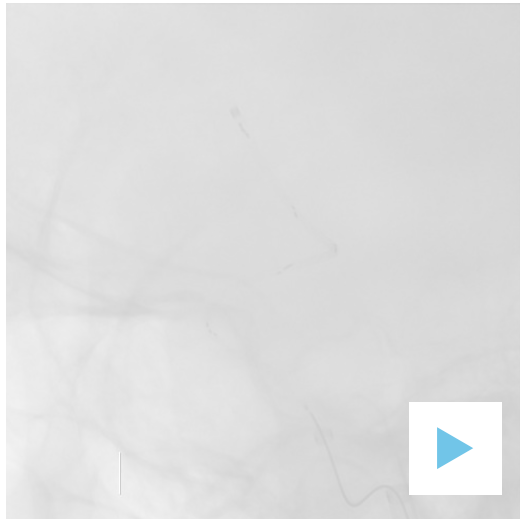
ENHANCED
VISUALIZATION

SOLITAIRE™
X
INFORMATION

ALIGN IT

VISUALIZE IT

RETRIEVE IT



Images: Solitaire™ Platinum



Medtronic

ENHANCED VISUALIZATION



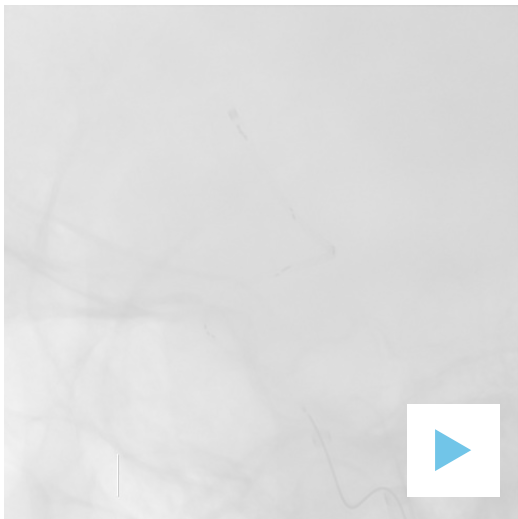
Visualize stent behavior during retrieval for optimal revascularization and **clot capture success**

UNIQUE
PARAMETRIC
DESIGN

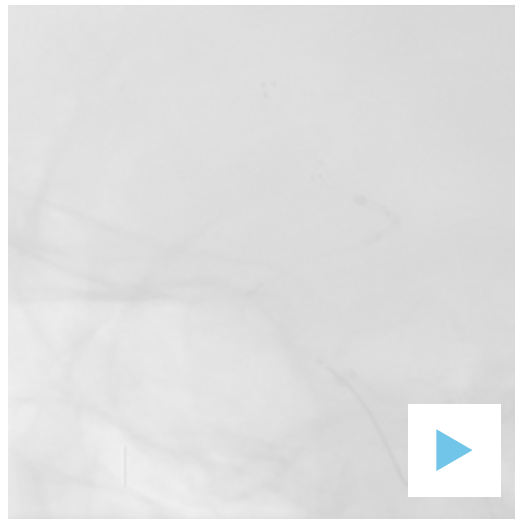
ENHANCED
VISUALIZATION

SOLITAIRE™
X
INFORMATION

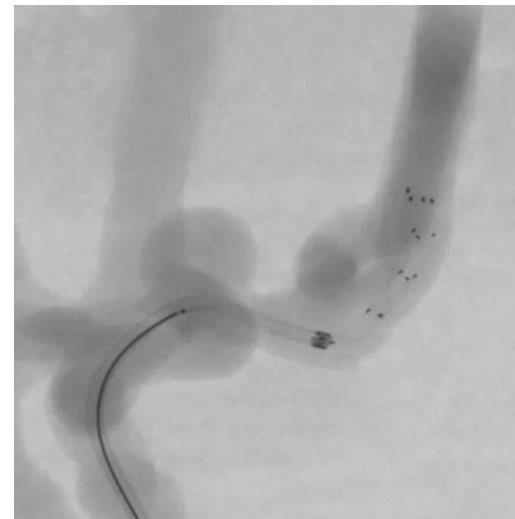
ALIGN IT



VISUALIZE IT



RETRIEVE IT



Images: Solitaire™ Platinum



Medtronic

SOLITAIRE™ X

A DIFFERENCE YOU CAN FEEL, WITH PRECISION YOU CAN SEE



▶ **OPTIMIZED DELIVERY**
Improved Efficiency

▶ **LOWER PROFILE**
greater flexibility

▶ **VISUALIZATION & COVERAGE**



▶ **MORE OPTIONS**
Better control

▶ **PARAMETRIC**
Design

▶ **4TH**
Generation

CLICK ▶ TO
LEARN MORE

For 10 years, Solitaire™ Revascularization Device has supported you in helping your patients with a better chance of recovery

Now we advanced our design for **optimized delivery** and **ease of use**^{23,24}, while retaining the clinically proven²⁵ features you've come to depend on

TECHNICAL
CHARACTERISTICS



UNIQUE
PARAMETRIC
DESIGN

ENHANCED
VISUALIZATION

SOLITAIRE™
X
INFORMATION



REF

Medtronic



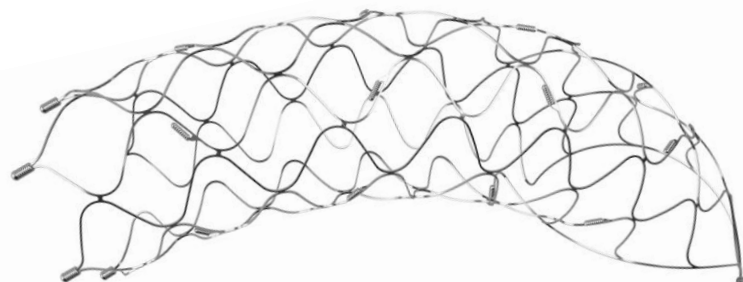
OPTIMIZED DELIVERY
Improved Efficiency



LOWER PROFILE
greater flexibility



VISUALIZATION & COVERAGE



LONGER PUSHWIRE^{27,28}
200CM

LARGER PUSHWIRE^{27,28}
0.018"



MORE OPTIONS
Better control



PARAMETRIC
Design



4TH
Generation

OPTIMIZED DELIVERY IMPROVED EFFICIENCY²⁶

Our Solitaire™ X Revascularization Device – designed with an **optimized delivery** system – produces lower delivery force²⁷ for improved procedural efficiency and smooth navigation through even the most complicated anatomy

47%
LOWER
DELIVERY
FORCE^{26,27}

in a .021"
Microcatheter²⁹

Size: 6-40-10

Solitaire™ X
Phenom™ 21

Solitaire™ Platinum
Phenom™ 27

UNIQUE
PARAMETRIC
DESIGN

ENHANCED
VISUALIZATION

SOLITAIRE™
X
INFORMATION



REF

SOLITAIRE™ X

A DIFFERENCE YOU CAN FEEL, WITH PRECISION YOU CAN SEE



▶ **OPTIMIZED DELIVERY**
Improved Efficiency

▶ **LOWER PROFILE**
greater flexibility

▶ **VISUALIZATION & COVERAGE**



▶ **MORE OPTIONS**
Better control

▶ **PARAMETRIC**
Design

▶ **4TH**
Generation

LOWER PROFILE GREATER FLEXIBILITY



17% LOWER^{30,31}
CLOT CROSSING
PROFILE

When combined with a 0.021" microcatheter, the Solitaire™ X Revascularization Device provides smooth and adaptable deliverability with a lower clot crossing profile³²

UNIQUE
PARAMETRIC
DESIGN

ENHANCED
VISUALIZATION

SOLITAIRE™
X
INFORMATION



REF

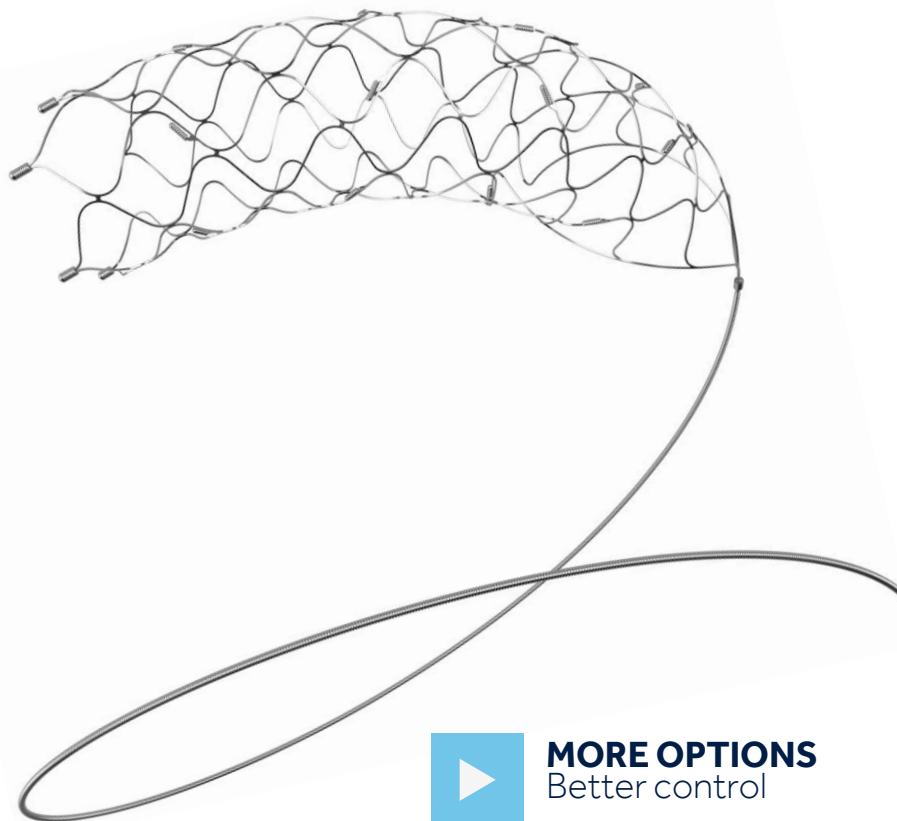
Medtronic



▶ **OPTIMIZED DELIVERY**
Improved Efficiency

▶ **LOWER PROFILE**
greater flexibility

▶ **VISUALIZATION & COVERAGE**



▶ **MORE OPTIONS**
Better control

▶ **PARAMETRIC**
Design

▶ **4TH**
Generation

VISUALIZATION & COVERAGE

Complete visualization and coverage from M2 to ICA^{33,34}

(Image courtesy of Dr Dennis Rivet)



The Solitaire™ X Revascularization Device enables reliable and effective use in **vessels as small as 2.0mm** so you can confidently treat distal occlusions out to M2

UNIQUE
PARAMETRIC
DESIGN

ENHANCED
VISUALIZATION

SOLITAIRE™
X
INFORMATION



REF

SOLITAIRE™ X

A DIFFERENCE YOU CAN FEEL, WITH PRECISION YOU CAN SEE



▶ **OPTIMIZED DELIVERY**
Improved Efficiency

▶ **LOWER PROFILE**
greater flexibility

▶ **VISUALIZATION & COVERAGE**

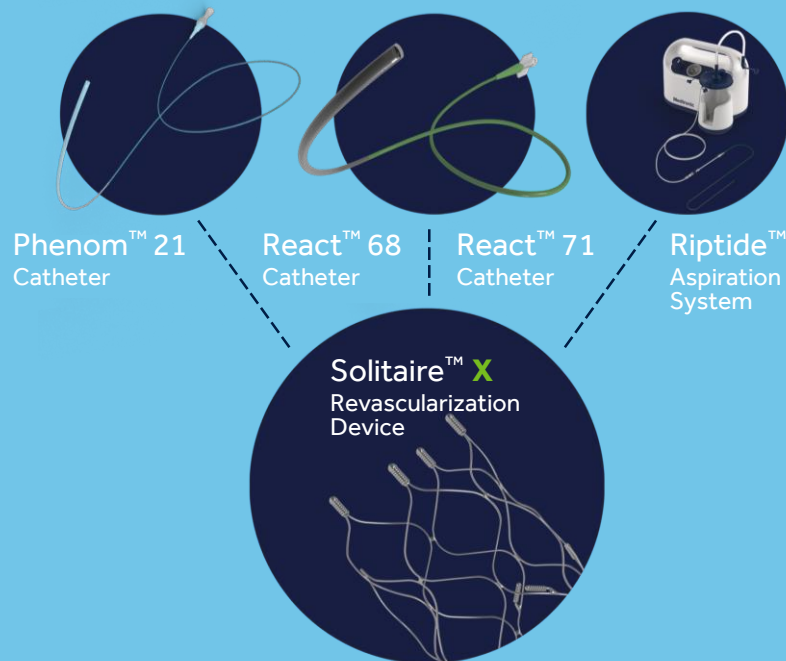


▶ **MORE OPTIONS**
Better control

▶ **PARAMETRIC**
Design

▶ **4TH**
Generation

MORE OPTIONS BETTER CONTROL



**The Solitaire™ X
Revascularization Device's**
expanded compatibility gives you
the flexibility to employ the optimal
technology for each procedure

**UNIQUE
PARAMETRIC
DESIGN**

**ENHANCED
VISUALIZATION**

**SOLITAIRE™
X
INFORMATION**



Medtronic

SOLITAIRE™ X

A DIFFERENCE YOU CAN FEEL, WITH PRECISION YOU CAN SEE



▶ OPTIMIZED DELIVERY
Improved Efficiency

▶ LOWER PROFILE
greater flexibility

▶ VISUALIZATION & COVERAGE



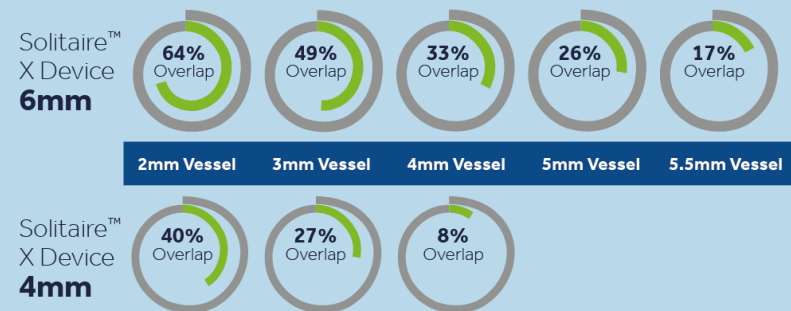
▶ MORE OPTIONS
Better control

▶ PARAMETRIC
Design

▶ 4TH
Generation

PARAMETRIC DESIGN

The Solitaire™ Revascularization Devices features a unique parametric design for dynamic clot integration^{35,36}



LEARN MORE
ABOUT
PARAMETRIC
DESIGN

DIFFERENTIATED
RADIAL OUTWARD
FORCE^{36,37}

UNIQUE
PARAMETRIC
DESIGN

ENHANCED
VISUALIZATION

SOLITAIRE™
X
INFORMATION



REF

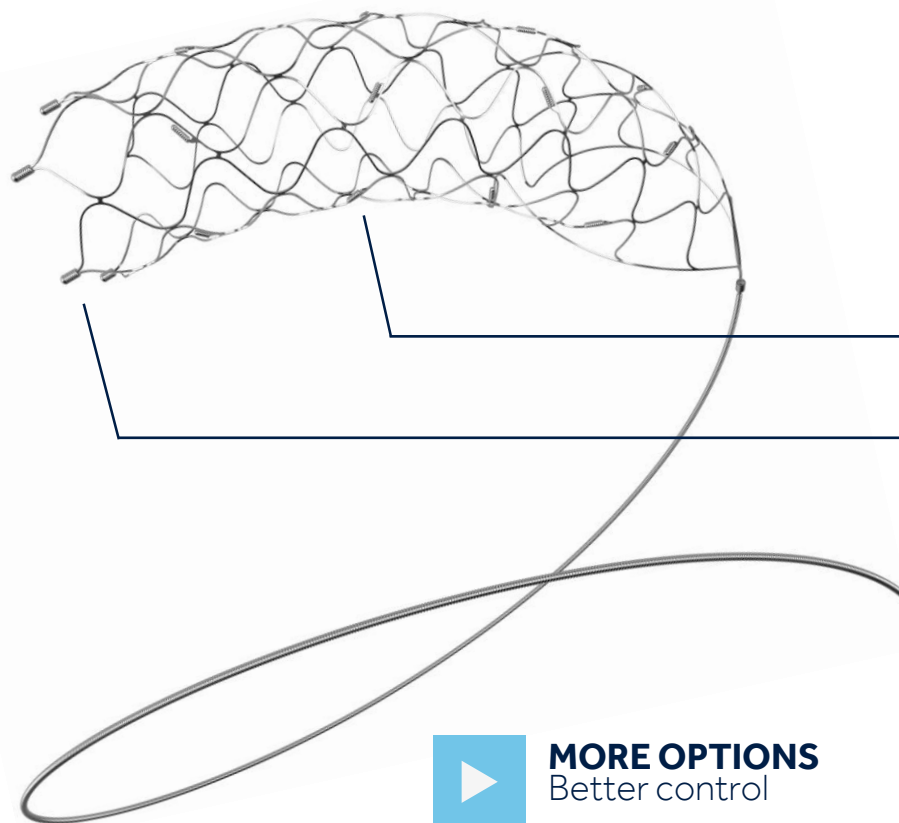
Medtronic



▶ OPTIMIZED DELIVERY
Improved Efficiency

▶ LOWER PROFILE
greater flexibility

▶ VISUALIZATION & COVERAGE



▶ MORE OPTIONS
Better control

▶ PARAMETRIC
Design

▶ 4TH
Generation

4th GENERATION

FEATURES & INDICATIONS

Indicated from 2MM vessels
Compatible with .021" microcatheters



COMPATIBILITY

Pushwire diameter 0.018
Pushwire length 200cm



TECHNICAL
DETAILS

→ 5 rows of evenly spaced markers every
10 mm with 3 body markers/row

→ 3 or 4 distal markers



VISIBILITY

Providing meaningful real 3D
visualization, for confidence and
feedback during the procedure

WHAT REMAINS UNCHANGED

- Unique parametric design
- Stent design & visibility
- Diameters & Lengths
- Indications, Instructions & Warnings

UNIQUE
PARAMETRIC
DESIGN

ENHANCED
VISUALIZATION

SOLITAIRE™
X
INFORMATION





Solitaire™ X device ordering information

Model	Recommended Vessel Diameter^ (mm)		Minimum Microcatheter ID (inch)		Push Wire Length (cm)	Stent Diameter (mm)	Usable Length ^B (mm)	Stent Length (mm)	Length from Distal Tip to Fluorosafe Marker (cm)	Radiopaque Markers		Radiopaque Stent Markers Spacing (mm)
	(min)	(max)	(min)	(max)						Distal	Prox.	
SFR4-4-20-05	2.0	4.0	0.021	0.027	200	4.0	20.0	31.0	<130	3	1	5
SFR4-4-40-10	2.0	4.0	0.021	0.027	200	4.0	40.0	50.0	<130	3	1	10
SFR4-6-20-10	2.0	5.5	0.021	0.027	200	6.0	20.0	31.0	<130	4	1	10
SFR4-6-40-10	2.0	5.5	0.021	0.027	200	6.0	40.0	47.0	<130	4	1	10

A. Based on the smallest vessel diameter at thrombus site. B. Usable length that is at least as long as the length of the thrombus. Up to 3 retrieval passes³⁸

UNIQUE
PARAMETRIC
DESIGN

ENHANCED
VISUALIZATION

SOLITAIRE™
X
INFORMATION



REF

The Solitaire™ Platinum Revascularization Device is intended to restore blood flow by removing thrombus from a large intracranial vessel in patients experiencing ischemic stroke within 8 hour of symptom onset. Patients who are ineligible for intravenous tissue plasminogen activator (IV t-PA) or who fail IV t-PA therapy are candidates for treatment.

The Solitaire™ X Revascularization Device is indicated for use to restore blood flow in the neurovasculature by removing thrombus for the treatment of acute ischemic stroke to reduce disability in patients with a persistent, proximal anterior circulation, large vessel occlusion of the internal carotid artery (ICA) or middle cerebral artery (MCA)-M1 segments with smaller core infarcts (<70 cc by CTA or MRA, <25 cc by MR-DWI). Endovascular therapy with the device should start within 6-16 hours of time last seen well in patients who are ineligible for intravenous tissue plasminogen activator (IV t-PA) or who fail IV t-PA therapy.

Phenom™ Catheters are intended for the introduction of interventional devices and infusion of diagnostic or therapeutic agents into the neuro, peripheral, and coronary vasculatures.

The React™ 68 Catheter and React™ 71 Catheter are indicated for the introduction of interventional devices into the peripheral and neuro vasculature.

The Riptide™ Aspiration System is intended for use in the revascularization of patients with acute ischemic stroke secondary to intracranial large vessel occlusive disease (within the internal carotid, middle cerebral M1 and M2 segments, basilar, and vertebral arteries) within 8 hours of symptom onset. Patients who are ineligible for intravenous tissue plasminogen activator (IV t-PA) or who fail IV t-PA therapy are candidates for treatment. Riptide™ is not currently CE marked and is only distributed in the United States.

See the device manual for detailed information regarding the instructions for use, indications, contraindications, warnings, precautions, and potential adverse events. For further information, contact your local Medtronic representative and/or consult the Medtronic website at medtronic.eu.

Europe

Medtronic International
Trading Sàrl.
Route du Molliau 31
Case postale
CH-1131 Tolochenaz
Tel: +41 (0)21 802 70 00
Fax: +41 (0)21 802 79 00
medtronic.eu

UC202002269EE © 2019 Medtronic. All Rights Reserved.
Medtronic, Medtronic logo and Further, Together are trademarks of Medtronic.
All other brands are trademarks of a Medtronic company.
™* Third party brands are trademarks of their respective owners.



Medtronic
Further, Together

UNIQUE PARAMETRIC DESIGN

REVOLUTIONIZING MECHANICAL THROMBECTOMY



SAFETY
With consistent cell area



EFFICACY
With improved clot retention

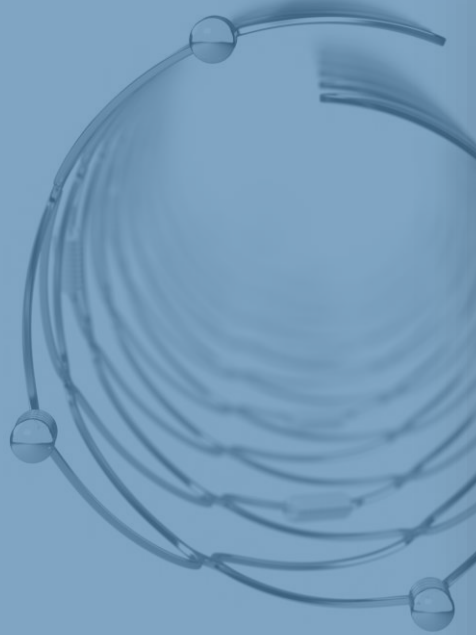
SAFETY

WITH CONSISTENT & STABLE CELL AREA

UNIQUE
PARAMETRIC
DESIGN

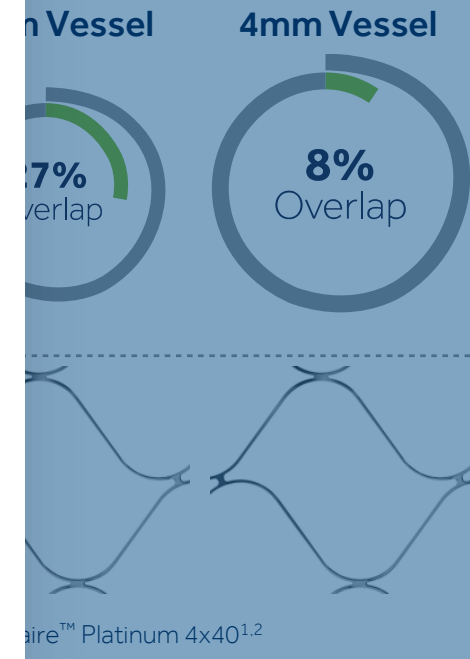
ENHANCED
VISUALIZATION

SOLITAIRE™
X
INFORMATION



REFERENCES

1. TR-NV15666A Rev A
2. TR-NV13807 Rev A



ADAPTABILITY
With overlapping stent-based design



Solitaire parametric design is providing a **consistent and stable cell area** in order to optimize clot retention according to varying anatomies



REF

Medtronic

UNIQUE PARAMETRIC DESIGN

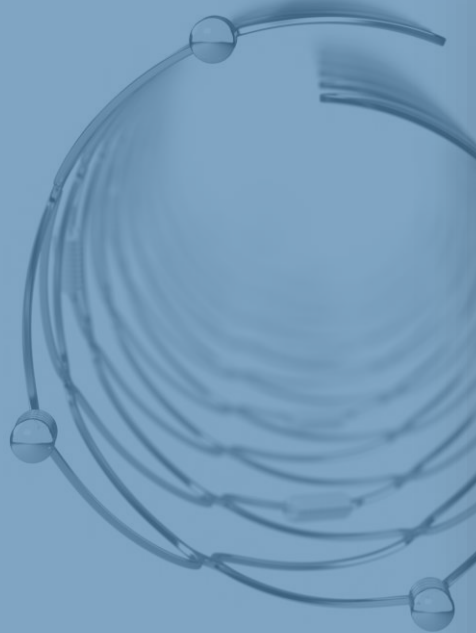
REVOLUTIONIZING MECHANICAL THROMBECTOMY



SAFETY
With consistent cell area



EFFICACY
With improved clot retention



ADAPTABILITY
With overlapping stent-based design

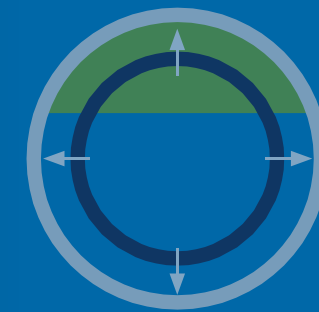


EFFICACY

WITH IMPROVED CLOT RETENTION

REFERENCES

3. Trevo XP Provue Brochure
NV00004347 (AD)



Depiction of a standard competitor device, designed with only one plane of contact¹

The Solitaire™ Platinum device is a unique stent retriever with an overlapping design **providing multiple planes of clot integration contact** and a differentiated radial outward force

UNIQUE
PARAMETRIC
DESIGN

ENHANCED
VISUALIZATION

SOLITAIRE™
X
INFORMATION



REF

Medtronic

UNIQUE PARAMETRIC DESIGN

REVOLUTIONIZING MECHANICAL THROMBECTOMY



SAFETY
With consistent cell area

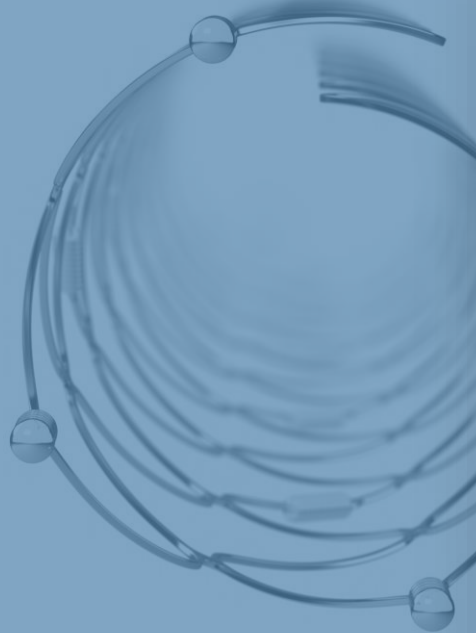
EFFICACY
With improved clot retention

ADAPTABILITY WITH OVERLAPPING STENT-BASED DESIGN

UNIQUE
PARAMETRIC
DESIGN

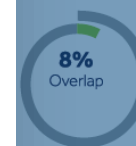
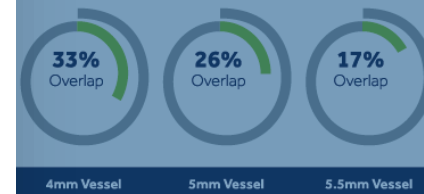
ENHANCED
VISUALIZATION

SOLITAIRE™
X
INFORMATION



REFERENCES

2. TR-NV13807 Rev A
4. TR-NV15666A Rev A



† Simulated measurement (n=1)
* Values for Solitaire™ Platinum and Solitaire™ X^{2,4}

ADAPTABILITY
With overlapping stent-based design



nt design allows
the device to **expand in larger vessels**
and compress in smaller vessels during
deployment and retrieval²



REF

Medtronic

UNIQUE PARAMETRIC DESIGN

REVOLUTIONIZING MECHANICAL THROMBECTOMY



SAFETY
With consistent cell area



EFFICACY
With improved clot retention

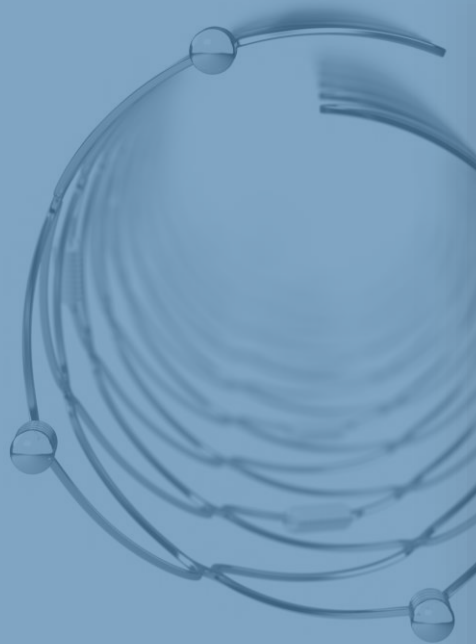
CONFIDENCE

DURING THE PROCEDURE

UNIQUE
PARAMETRIC
DESIGN

ENHANCED
VISUALIZATION

SOLITAIRE™
X
INFORMATION



REFERENCES

5. Internal Data (PR-NV12554 Rev B)



SOLITAIRE 4x40°
ACUTE ANGLE

3D data

EL WALL



ADAPTABILITY
With overlapping stent-based design



Maintains the thrombus engaged within its struts during the retrieval
Limits device elongation and foreshortening during deployment and delivery



REF

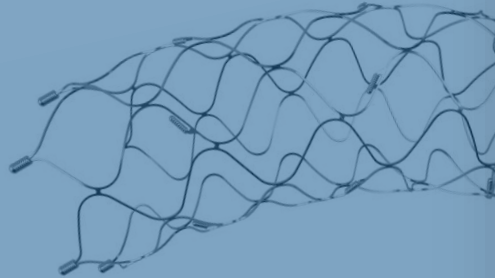
Medtronic



▶ **OPTIMIZED DELIVERY**
Improved Efficiency

▶ **LOWER PROFILE**
greater flexibility

▶ **VISUALIZATION & COVERAGE**



▶ **PARAMETRIC**
Design

▶ **MORE OPTIONS**
Better control

▶ **4TH**
Generation

CLICK ▶ TO
LEARN MORE

REFERENCES

- 23. TR-NV16168 Rev A
- 24. Compared to Solitaire™ Platinum
- 25. STRATIS, SWIFT PRIME, ESCAPE, Nasa Registry, THRACE, MR CLEAN, STAR, EXTEND IA, HERMES, SEER, REVASCAT, DEFUSE 3, Note: The Solitaire™ X Revascularization Device was not evaluated in these studies



UNIQUE
PARAMETRIC
DESIGN

ENHANCED
VISUALIZATION

SOLITAIRE™
X
INFORMATION

...™ Revascularization
...ed you in helping your
...er chance of recovery.

...ur design for
...and **ease of use**^{23,24},
...inically proven²⁵
...e to depend on.

TECHNICAL
CHARACTERISTICS



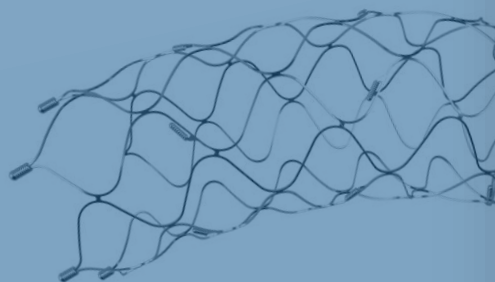
REF



▶ OPTIMIZED DELIVERY
Improved Efficiency

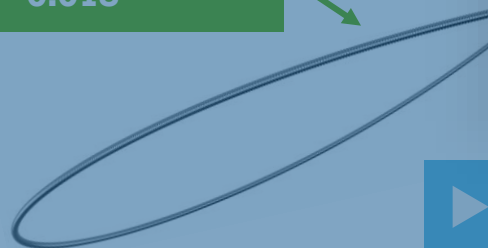
▶ LOWER PROFILE
greater flexibility

▶ VISUALIZATION & COVERAGE



LONGER PUSHWIRE
200CM

LARGER PUSHWIRE^{27,28}
0.018"



▶ PARAMETRIC
Design

▶ MORE OPTIONS
Better control

▶ 4TH
Generation

OPTIMIZED DELIVERY

IMPROVED EFFICIENCY²⁶

REFERENCES

- 26. TR-NV16168 Rev A
- 27. Compared to Solitaire™ Platinum
- 28. 71042-001 Rev B
- 29. Phenom 21 Catheter



Vascularization Device –
Optimized delivery
lower delivery force²⁷
natural efficiency and
through even the
anatomy

Size: 6-40-10

Solitaire™ X
Phenom™ 21

Solitaire™ Platinum
Phenom™ 27

UNIQUE
PARAMETRIC
DESIGN

ENHANCED
VISUALIZATION

SOLITAIRE™
X
INFORMATION



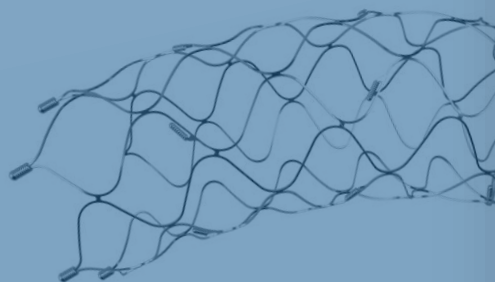
REF



▶ OPTIMIZED DELIVERY
Improved Efficiency

▶ LOWER PROFILE
greater flexibility

▶ VISUALIZATION & COVERAGE



▶ PARAMETRIC
Design

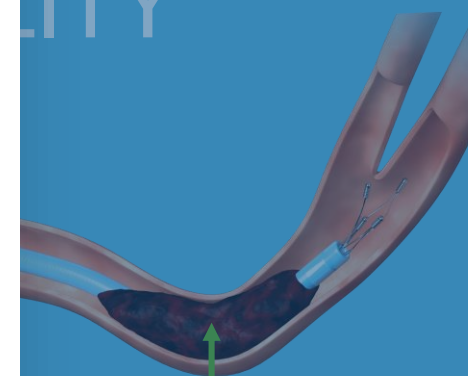
▶ MORE OPTIONS
Better control

▶ 4TH
Generation

LOWER PROFILE GREATER DELIVERABILITY

REFERENCES

- 30. DWGSFG13XXX-YYyy-Zz Rev B
- 31. DWGSFG15XXX-YYyy-Zz Rev B
- 32. Compared to Solitaire™ Platinum



17% LOWER^{30,31}
CLOT CROSSING
PROFILE

with a 0.021"
Solitaire™ X

Revascularization Device provides smooth and adaptable deliverability with a lower clot crossing profile³²

UNIQUE
PARAMETRIC
DESIGN

ENHANCED
VISUALIZATION

SOLITAIRE™
X
INFORMATION



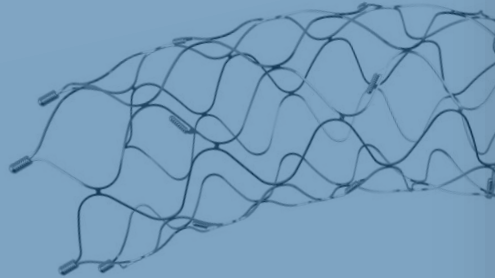
REF



▶ **OPTIMIZED DELIVERY**
Improved Efficiency

▶ **LOWER PROFILE**
greater flexibility

▶ **VISUALIZATION & COVERAGE**



▶ **PARAMETRIC**
Design

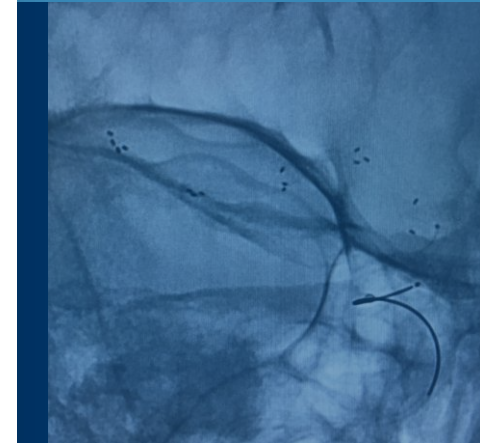
▶ **MORE OPTIONS**
Better control

▶ **4TH**
Generation

VISUALIZATION & COVERAGE

REFERENCES

- 33. Umansky, F. et al. Microsurgical anatomy of the proximal segments of the middle cerebral artery
- 34. TR-NV15666A Rev A



The Solitaire™ X Revascularization Device enables reliable and effective use in **vessels as small as 2.0mm** so you can confidently treat distal occlusions out to M2

UNIQUE
PARAMETRIC
DESIGN

ENHANCED
VISUALIZATION

SOLITAIRE™
X
INFORMATION



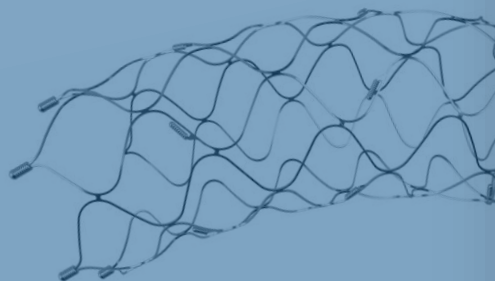
REF



▶ OPTIMIZED DELIVERY
Improved Efficiency

▶ LOWER PROFILE
greater flexibility

▶ VISUALIZATION & COVERAGE



▶ MORE OPTIONS
Better control

▶ PARAMETRIC
Design

▶ 4TH
Generation

PARAMETRIC DESIGN

REFERENCES

- 35. TR-NV13807
- 36. TR-NV15666A Rev A
- 37. TR-NV12180 Rev A

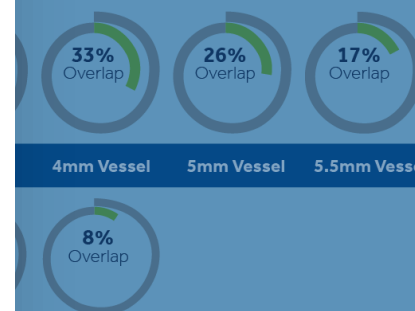


UNIQUE
PARAMETRIC
DESIGN

ENHANCED
VISUALIZATION

SOLITAIRE™
X
INFORMATION

Vascularization Devices
parametric design for
ation^{35,36}



LEARN MORE
ABOUT
PARAMETRIC
DESIGN

DIFFERENTIATED
RADIAL OUTWARD
FORCE^{36,37}



REF



▶ **OPTIMIZED DELIVERY**
Improved Efficiency

▶ **LOWER PROFILE**
greater flexibility

PARAMETRIC DESIGN

UNIQUE PARAMETRIC DESIGN

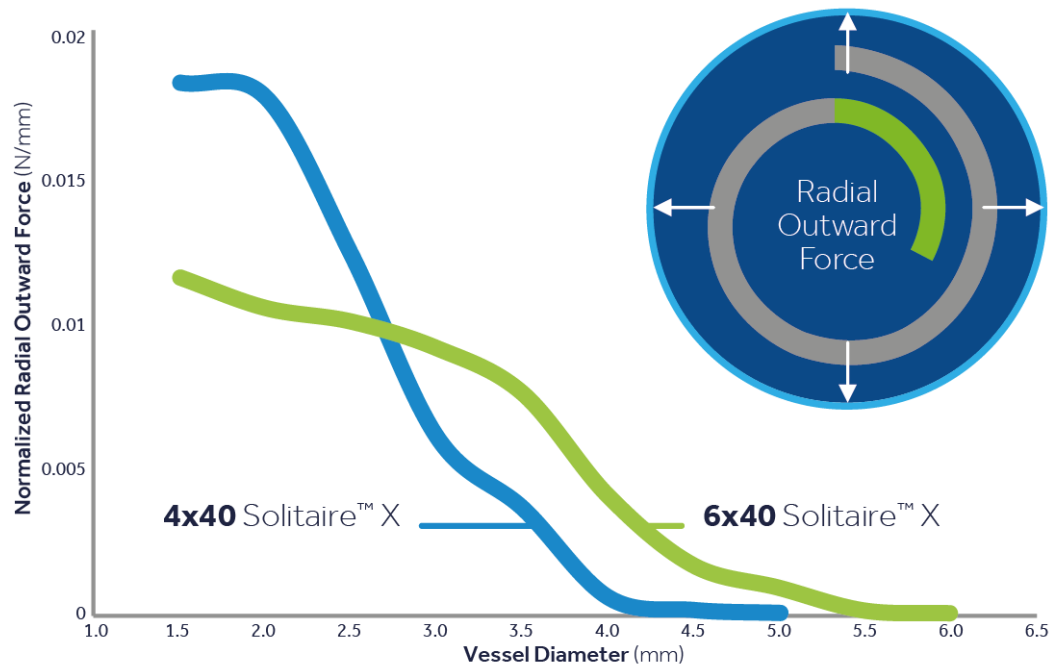
▶ **VISUALIZATION & COVERAGE**



ENHANCED VISUALIZATION

SOLITAIRE™ X INFORMATION

DIFFERENTIATED RADIAL OUTWARD FORCE^{36,37}



REF

✕

▶ **MORE OPTIONS**
Better control

LEARN MORE ABOUT PARAMETRIC DESIGN

DIFFERENTIATED RADIAL OUTWARD FORCE^{36,37}

▶ **PARAMETRIC Design**

▶ **4TH Generation**

< >

REF



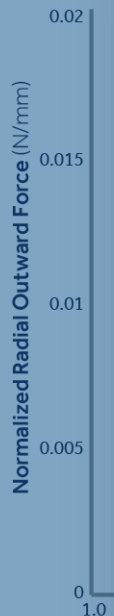
▶ OPTIMIZED DELIVERY
Improved Efficiency

▶ LOWER PROFILE
greater flexibility

▶ VISUALIZATION & COVERAGE



DIFFERENTIATED RADIAL OUTWARD FORCE^{36,37}



REFERENCES

- 35. TR-NV13807
- 36. TR-NV15666A Rev A
- 37. TR-NV12180 Rev A



▶ PARAMETRIC
Design

▶ 4TH
Generation

LEARN MORE
ABOUT
PARAMETRIC
DESIGN

DIFFERENTIATED
RADIAL OUTWARD
FORCE^{36,37}

**UNIQUE
PARAMETRIC
DESIGN**

**ENHANCED
VISUALIZATION**

**SOLITAIRE™
X
INFORMATION**



REF